

Classroom Dollars and Proposition 301 Results

Gadsden Elementary School District

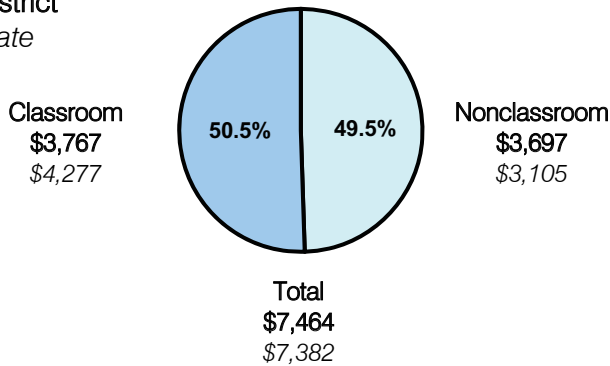
Yuma County

District size: Medium
 Students attending: 4,461
 Number of schools: 8
 Number of certified teachers: 214

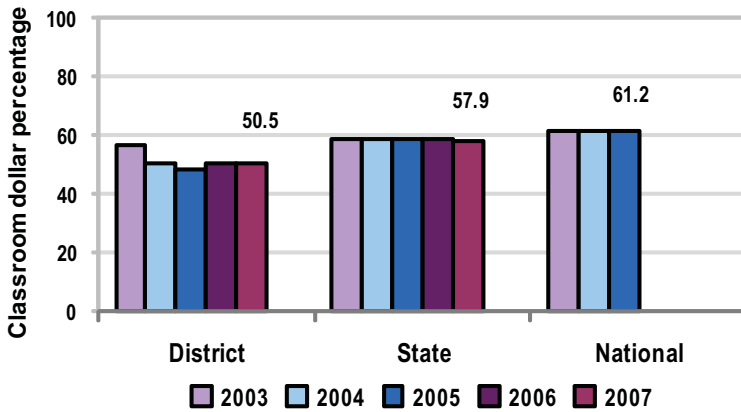
Classroom Dollars

Fiscal year 2007 averages per pupil

District
 State



5-year comparison



Expenditures by function

	District					State 2007	National 2005
	2003	2004	2005	2006	2007		
Classroom dollars	56.6	50.6	48.6	50.2	50.5	57.9	61.2
Nonclassroom dollars:							
Administration	13.5	11.7	11.9	12.2	12.2	9.5	11.0
Plant operations	9.1	11.7	11.1	10.5	10.5	11.3	9.6
Food service	7.3	8.1	8.6	8.3	8.3	4.7	3.9
Transportation	3.7	3.5	3.0	3.0	3.0	4.3	4.1
Student support	5.1	5.4	6.1	6.4	6.7	7.3	5.2
Instruction support	4.7	9.0	10.7	9.4	8.8	4.8	4.8
Other						0.2	0.2

Comparative Information

	District			State 2007
	2005	2006	2007	
Student/teacher ratio	21.9	22.4	20.8	17.4
Average teacher salary	\$42,785	\$41,709	\$43,145	\$43,833
Average years' experience	7.1	7.5	7.8	8.1

Classroom dollar ranking: 173 of 229 districts.

Proposition 301

District-reported 2007 results

Teacher pay

- On average, each teacher, instructional aide, librarian, speech pathologist, counselor, preschool director, reading specialist, and No Child Left Behind specialist earned an additional \$4,410 in salary, and each psychologist earned an additional \$3,260.

Performance

- The District accomplished its goals, which were similar to the prior fiscal year's goals and were based on district performance.
- Standardized test scores were used to measure improvement in student achievement.
- Teachers attended professional development activities, received satisfactory performance evaluations, and participated in leadership activities and tutoring.
- Student attendance rates averaged at least 93.5 percent.
- Parent involvement increased.

Menu

- Monies continued to be used for professional development and community service activities to help improve student achievement. In addition, the District hired 2 professional development coaches and used outside consultants to structure its professional development program.