

Gadsden Elementary School District

Yuma County

Efficiency peer groups 9 and T-6, Achievement peer group 19

Legislative district(s): 4

District size, location:

Medium-large, Town

Students attending:

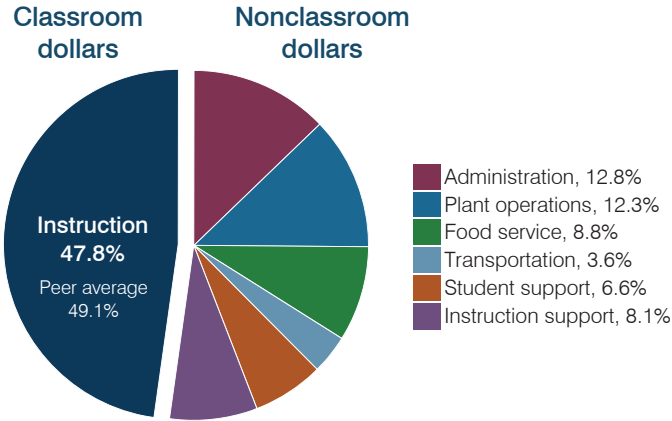
5,186

Number of schools:

8

OPERATIONAL EFFICIENCY

Spending by operational area



Efficiency measures relative to peer averages

Operational area	Measure	District	Peer average	State average
Administration	Cost per pupil	\$913	\$1,108	\$806
	Students per administrative position	63	59	67
Plant operations	Cost per square foot	\$9.28	\$7.02	\$6.10
	Square footage per student	94	149	154
Food service	Cost per meal	\$2.69	\$2.88	\$2.81
Transportation	Cost per mile	\$3.39	\$3.68	\$3.72
	Cost per rider	\$252	\$543	\$1,092

Per pupil spending

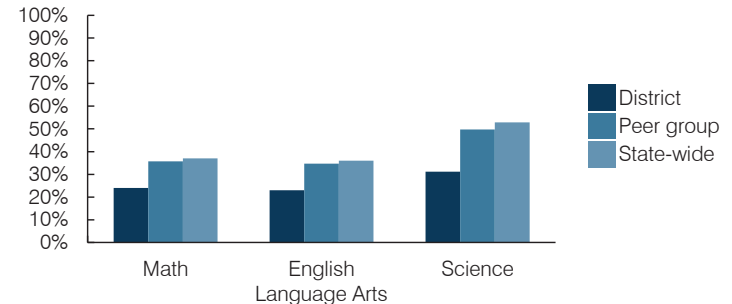
Spending by area	District		Peer average 2016	State average 2016
	2015	2016		
Instruction	\$ 3,574	\$ 3,404	\$ 3,970	\$ 4,145
Administration	867	913	1,108	806
Plant operations	819	875	1,027	939
Food service	598	627	573	415
Transportation	274	256	437	364
Student support	468	470	512	633
Instruction support	664	575	473	444
Total operational	\$ 7,264	\$ 7,120	\$ 8,100	\$ 7,746
Land and buildings	\$ 84	\$ 121	\$ 302	\$ 621
Equipment	114	149	308	400
Interest	19	48	81	216
Other	13	10	115	153
Total nonoperational	\$ 230	\$ 328	\$ 806	\$ 1,390
Total per pupil spending	\$ 7,494	\$ 7,448	\$ 8,906	\$ 9,136

STUDENT AND TEACHER MEASURES, FINANCIAL ASSESSMENT, AND REVENUES

Student and teacher measures

Measure	District	Peer average	State average
Attendance rate (2015)	95%	94%	94%
Graduation rate (2015)	N/A	N/A	N/A
Poverty rate (2015)	39%	34%	23%
Students per teacher	29.1	16.1	18.6
Average teacher salary	\$49,572	\$47,933	\$46,384
Amount from Proposition 301	\$4,536	\$4,405	\$5,315
Average years of teacher experience	8.7	12.0	11.0
Percentage of teachers in first 3 years	16%	18%	20%

Students who passed state assessments



Financial stress assessment

Overall financial stress level: **Low**

Measure: 2014 through 2016

Measure	Assessment
Change in number of district students	Steady
Spending exceeded operating/capital budgets	No overspending
Spending increase election results	Voter-approved
Operating reserve percentage, Trend	4.0%, Steady
Years of capital reserve held	More than 3 years
Current financial and internal control status	Compliant

Low Moderate High

Per pupil revenues

Revenues by source	District		Peer average 2016	State average 2016
	2015	2016		
Federal	\$ 2,048	\$ 1,844	\$ 1,836	\$ 1,301
State	5,068	5,075	4,877	3,780
Local	579	553	2,734	4,268
Total revenues per pupil	\$ 7,695	\$ 7,472	\$ 9,447	\$ 9,349

Select revenues from common sources

Source	District	Peer average	State average
Equalization formula funding	\$ 4,825	\$ 4,961	\$ 5,688
Grants	2,277	1,872	1,981
Donations and tax credits	19	20	72

Select revenues from less common sources

Source	District	Peer average	State average
Desegregation	\$ 0	\$ 0	0 of 10
Small school adjustment	0	0	0 of 10
Federal impact aid	0	0	3 of 10
Voter-approved levy increases	24	0	7 of 10

Classroom dollar percentage

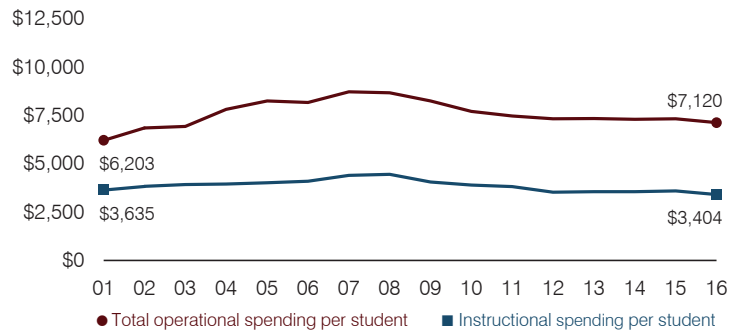
Year:	2001	2002	2003	2004	2005	2006	2007	2008	2009	2010	2011	2012	2013	2014	2015	2016
Percentage:	58.6	55.8	56.6	50.6	48.6	50.2	50.5	51.4	49.1	50.6	51.1	48.2	48.5	48.6	49.2	47.8

OPERATIONAL TRENDS
Fiscal years as indicated

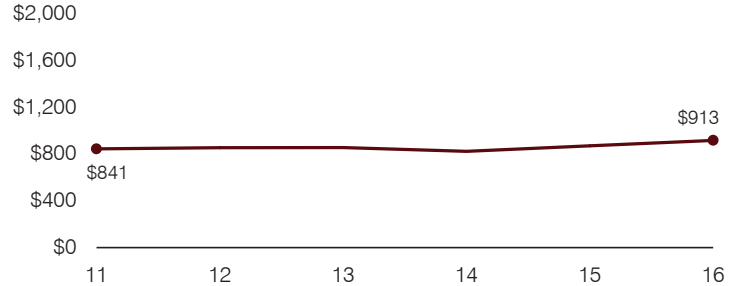
5-year spending trend (2011 through 2016)

Total operational spending per pupil, adjusted for inflation, decreased by 5 percent. The percentage of dollars spent in the classroom decreased overall from 51.1 to 47.8 percent. Overall, as a percentage of total operational spending, food service increased and administration and plant operations increased slightly. Instruction support varied year to year, while transportation and student support remained fairly stable.

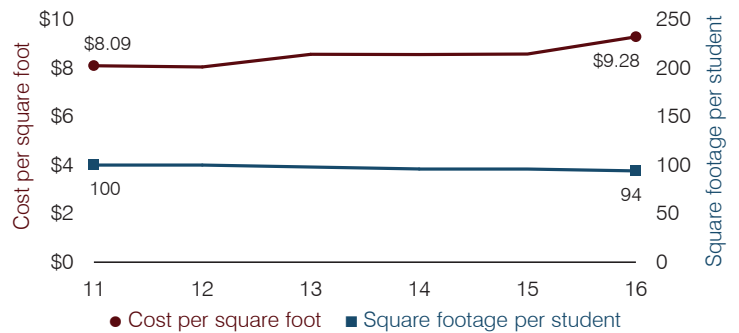
Total operational and instructional spending per pupil (inflation adjusted to 2016 dollars)



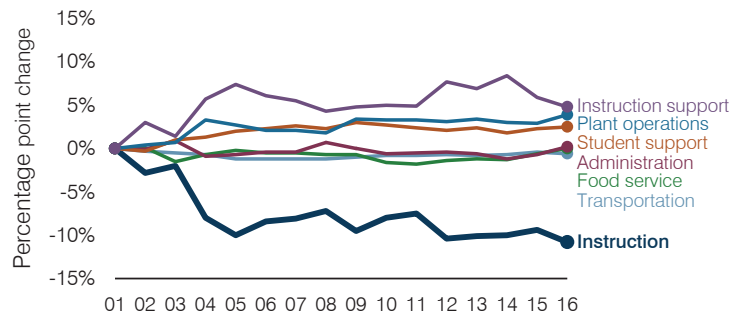
Administrative cost per pupil



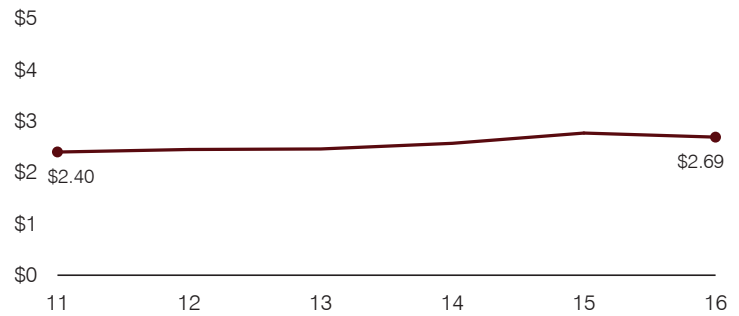
Plant cost per square foot and square footage per student



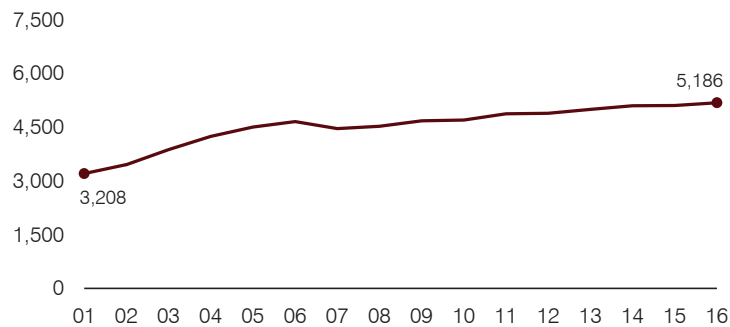
Changes in operational spending percentages



Food service cost per meal



Students attending



Transportation costs per mile and per rider

