

Gadsden Elementary School District

Yuma County

Peer groups: Efficiency Group 10, Achievement Group 21

Legislative district(s): 24

District size: Medium-Large

Students attending: 4,881

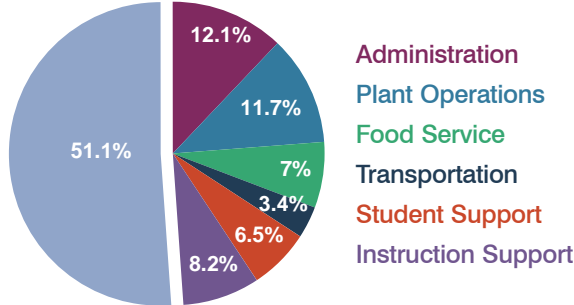
Number of schools: 8

OPERATIONAL EFFICIENCY

Spending by operational area

Classroom dollars

Nonclassroom dollars

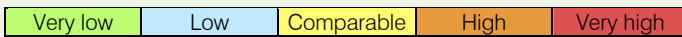


5-year trend

Total spending per pupil increased by 2 percent. Spending in the classroom varied year to year, increasing slightly overall from 50.2 to 51.1 percent. Spending on plant operations increased, and spending on food service and instruction support decreased. Spending on other nonclassroom areas remained fairly stable.

District's cost measures relative to peer group

Operational Area	Measure	District	Peer Average	State Average
Administration	Cost per pupil	\$841	\$938	\$728
	Students per administrator	69	63	66
Plant Operations	Cost per square foot	\$8.09	\$6.51	\$6.10
	Square footage per student	100	135	152
Food Service	Cost per meal equivalent	\$2.40	\$2.43	\$2.45
Transportation	Cost per mile	\$3.51	\$3.27	\$3.39
	Miles per rider	66	200	283



Per-pupil spending by operational area

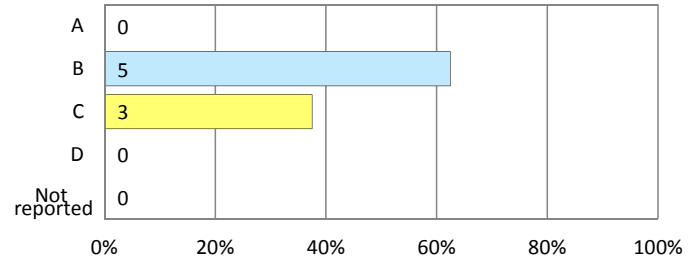
	District		Peer 2011	State 2011	National 2009
	2010	2011			
Total	\$7,007	\$6,931	\$7,223	\$7,485	\$10,591
Classroom dollars	\$3,543	\$3,542	\$3,637	\$ 4,098	\$ 6,456
Nonclassroom dollars:	\$3,464	\$3,389	\$3,586	\$ 3,387	\$ 4,135
Administration	844	841	938	728	1,147
Plant Operations	823	810	892	927	1,033
Food Service	504	487	515	375	404
Transportation	234	237	402	352	443
Student Support	476	450	379	571	573
Instruction Support	583	564	460	434	535

STUDENT ACHIEVEMENT AND TEACHER INFORMATION

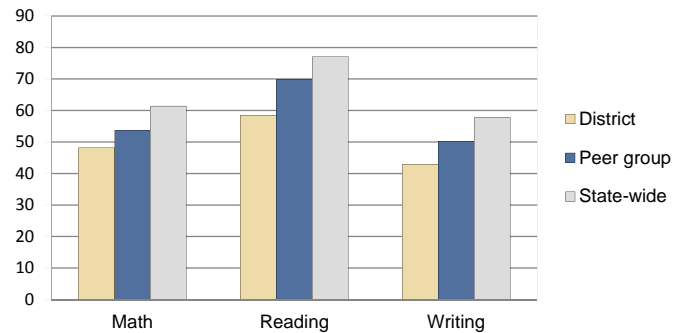
District and school letter grades

District grade: **C**

School grades (number and percentage):



Percentage of students meeting state standards (AIMS)



Student and teacher information

Measure	District	Peer Average	State Average
Attendance rate	95%	95%	95%
Graduation rate (2010)	N/A	N/A	N/A
Poverty rate (2010)	39%	38%	22%
Students per teacher	21.9	13.1	18.1
Average teacher salary	\$44,212	\$42,832	\$45,637
Average years of experience	7.8	10.3	10.9
Percent of teachers in first 3 years	33%	19%	16%

Proposition 301 pay, goals, and results

Average additional salary earned by teachers: \$2,274

Type of goal	Goal met?
Student achievement	■
Dropout/graduation rates	-
Student attendance	■
Parent/student satisfaction	-
Teacher attendance	-
Teacher professional development	-
Teacher evaluations	■
Tutoring	■
Other	■

■ = yes, □ = no, ▴ = partially, and - = no goal set