

Gadsden Elementary School District

Yuma County

Peer groups: Efficiency 10, Achievement 8

Legislative district(s): 24

District size: Medium-Large

Students attending: 4,704

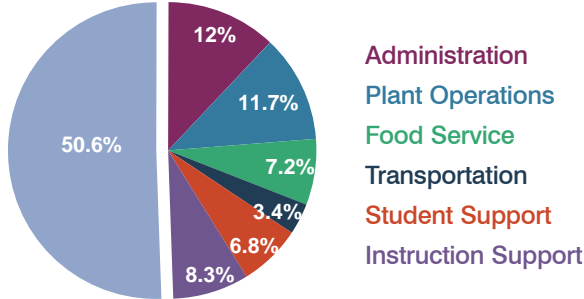
Number of schools: 8

OPERATIONAL EFFICIENCY

Spending by function

Classroom dollars

Nonclassroom dollars

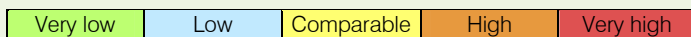


5-year trend

Total spending per pupil increased by 6 percent. Spending in the classroom varied year to year, increasing overall from 48.6 to 50.6 percent. Spending on instruction support decreased significantly, while spending in other nonclassroom areas remained fairly stable.

District's cost measures relative to peer group

Operational Area	Measure	District	Peer Average	State Average
Administration	Cost per pupil	\$844	\$1,019	\$721
	Students per administrator	68	65	66
Plant Operations	Cost per square foot	\$7.92	\$6.70	\$6.25
	Square footage per student	104	130	146
Food Service	Cost per meal equivalent	\$2.37	\$2.42	\$2.41
Transportation	Cost per mile	\$3.50	\$3.03	\$3.35
	Miles per rider	67	196	282

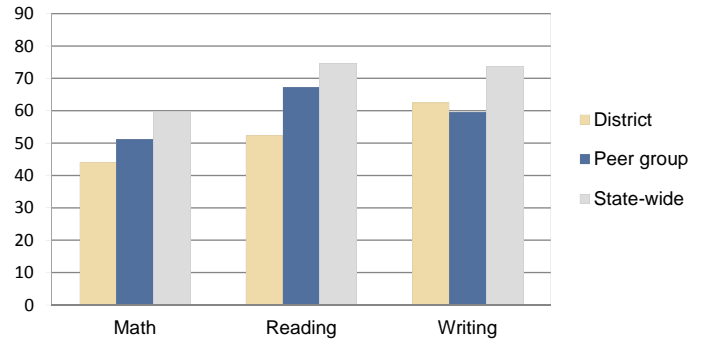


Per-pupil spending by function

	District		Peer 2010	State 2010	National 2008
	2009	2010			
Total	\$7,427	\$7,007	\$7,810	\$7,609	\$10,297
Classroom dollars	\$3,646	\$3,543	\$4,011	\$4,253	\$6,262
Nonclassroom dollars:	\$3,781	\$3,464	\$3,799	\$3,356	\$4,035
Administration	935	844	1,019	721	1,109
Plant Operations	874	823	916	914	1,003
Food Service	604	504	503	366	390
Transportation	236	234	432	342	438
Student Support	528	476	478	581	556
Instruction Support	604	583	451	432	539

STUDENT ACHIEVEMENT AND TEACHER INFORMATION

Percentage of students meeting state standards (AIMS)



Adequate Yearly Progress (AYP) toward federal goals

1 school met all applicable AYP objectives for NCLB. 7 did not because some students did not demonstrate sufficient academic progress.

Student and teacher information

Measure	District	Peer Average	State Average
Attendance rate	95%	94%	94%
Graduation rate (2009)	N/A	N/A	76%
Poverty rate (2009)	38%	34%	21%
Student/teacher ratio	23.5	14.4	17.9
Average teacher salary	\$46,841	\$43,616	\$47,077
Average years' experience	7.5	11.0	10.6
Percent of teachers in first 3 years	31%	20%	20%

Proposition 301

Teacher and other staff pay

On average, each teacher earned \$3,500 in additional pay, and each instructional aide, librarian, speech pathologist, counselor, interventionist, specialist, and preschool director earned between \$950 and \$3,500.

Performance pay plan goals and results

Type of goal	Goal met?
Student achievement	■
Dropout/graduation rates	-
Student attendance	-
Parent/student satisfaction	-
Teacher attendance	-
Teacher professional development	-
Teacher evaluations	-
Tutoring	-
Other	-

■ = yes, □ = no, ▴ = partially, and - = no goal set