

Ganado Unified School District

Apache County
Operational peer group: E
Legislative districts: 2

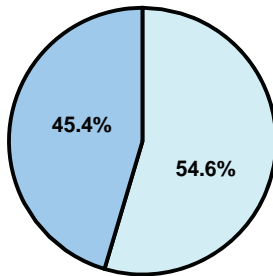
District size: Medium
Students attending: 1,675
Number of schools: 4

OPERATIONAL EFFICIENCY

Average per-pupil spending

District
State

Classroom
\$5,834
\$4,497



Nonclassroom
\$7,007
\$3,411

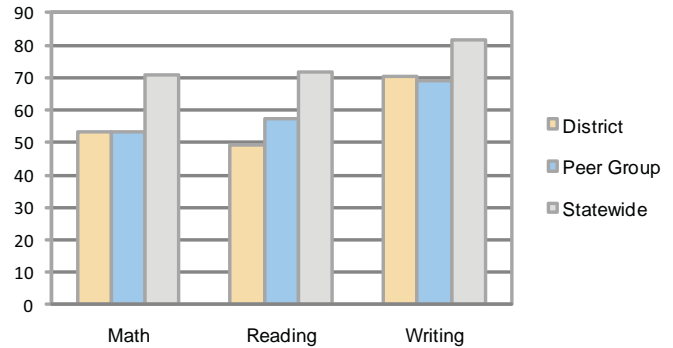
Total
\$12,841
\$7,908

5-year trend

Total spending per pupil increased by 28 percent. Spending in the classroom varied year to year and decreased overall from 47 to 45.4 percent. Spending on plant operations and student support increased significantly, while spending in other nonclassroom areas varied year to year.

STUDENT ACHIEVEMENT AND TEACHER INFORMATION

Percentage of students meeting state standards (AIMS)



Adequate Yearly Progress (AYP) toward federal goals

3 schools met all applicable AYP objectives for NCLB. 1 did not because some students did not demonstrate sufficient academic progress and its attendance rate was not sufficient.

Student and teacher information

Measure	District	Peer average	State average
Attendance rate	90%	93%	95%
Graduation rate (2008)	75%	70%	75%
Poverty rate	36%	31%	19%
Student/teacher ratio	12.6	14.9	17.1
Average teacher salary	\$40,457	\$41,086	\$45,209
Average years' experience	9.0	11.1	8.3
Percent of teachers in first 3 years	25%	20%	16%

District's cost measures relative to peer group

Operational Area	Measure	District	Peer Average	State Average
Administration	Cost per pupil	\$1,622	\$1,148	\$729
	Students per administrator	33	51	66
Plant Operations	Cost per square foot	\$6.17	\$5.49	\$6.40
	Square footage per student	345	253	144
Food Service	Cost per meal equivalent	\$2.99	\$3.07	\$2.53
Transportation	Cost per mile	\$2.75	\$2.53	\$3.36
	Miles per rider	371	359	271

Very Low Low Comparable High Very High

Per-pupil spending by function

	District		Peer	State	National
	2008	2009	2009	2009	2007
Total	\$13,115	\$12,841	\$9,562	\$7,908	\$9,683
Classroom dollars	\$6,119	\$5,834	\$4,925	\$4,497	\$5,903
Nonclassroom dollars:	\$6,996	\$7,007	\$4,637	\$3,411	\$3,780
Administration	1,730	1,622	1,148	729	1,050
Plant Operations	2,163	2,126	1,379	920	951
Food Service	503	584	444	382	369
Transportation	1,000	950	554	343	406
Student Support	1,073	1,184	749	594	512
Instruction Support	527	541	356	431	470
Other	0	0	7	12	22

Proposition 301

Teacher pay

On average, each teacher earned \$3,706 in additional salary, and each librarian, speech pathologist, counselor, and psychologist earned between \$587 and \$3,879.

Performance pay plan goals and results

Type of goal	Goal met?
Student achievement	▲
Dropout/ graduation rates	■
Student attendance	■
Parent/student satisfaction	■
Teacher attendance	▲
Teacher professional development	■
Teacher evaluations	■
Tutoring	■
Other	■

■ = yes, □ = no, and ▲ = partially