

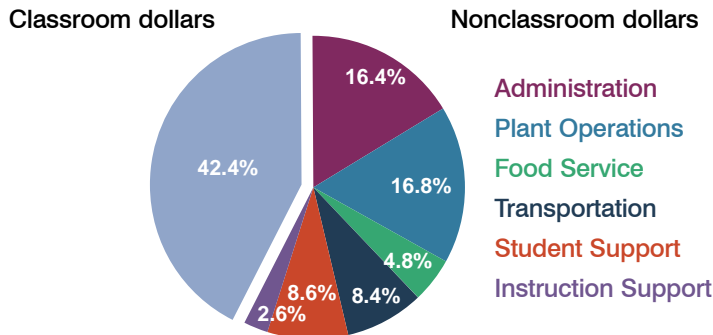
Ganado Unified School District

Apache County
Peer groups: Efficiency Group 5, Achievement Group 8
Legislative district(s): 2

District size: Medium
Students attending: 1,527
Number of schools: 4

OPERATIONAL EFFICIENCY

Spending by operational area



5-year trend

Total spending per pupil increased by 10 percent. Spending in the classroom decreased significantly from 46.3 to 42.4 percent. Overall, spending on administration and instruction support decreased significantly, and spending on plant operations, transportation, food service, and student support increased.

District's cost measures relative to peer group

Operational Area	Measure	District	Peer Average	State Average
Administration	Cost per pupil	\$2,069	\$1,104	\$728
	Students per administrator	37	56	66
Plant Operations	Cost per square foot	\$5.62	\$4.74	\$6.10
	Square footage per student	378	259	152
Food Service	Cost per meal equivalent	\$2.61	\$2.98	\$2.45
Transportation	Cost per mile	\$2.63	\$2.71	\$3.39
	Miles per rider	388	336	283

Very low Low Comparable High Very high

Per-pupil spending by operational area

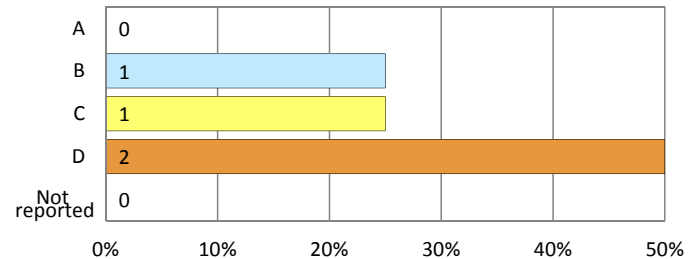
	District		Peer 2011	State 2011	National 2009
	2010	2011			
Total	\$12,810	\$12,639	\$8,531	\$7,485	\$10,591
Classroom dollars	\$5,547	\$5,356	\$4,298	\$4,098	\$6,456
Nonclassroom dollars:	\$7,263	\$7,283	\$4,233	\$3,387	\$4,135
Administration	2,048	2,069	1,104	728	1,147
Plant Operations	2,028	2,126	1,213	927	1,033
Food Service	590	602	421	375	404
Transportation	979	1,067	527	352	443
Student Support	1,249	1,084	651	571	573
Instruction Support	369	335	317	434	535

STUDENT ACHIEVEMENT AND TEACHER INFORMATION

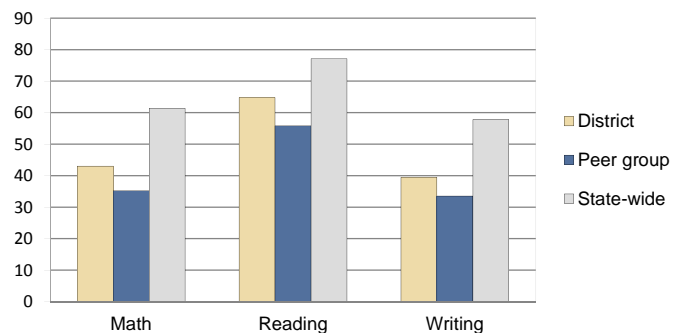
District and school letter grades

District grade: **C**

School grades (number and percentage):



Percentage of students meeting state standards (AIMS)



Student and teacher information

Measure	District	Peer Average	State Average
Attendance rate	92%	92%	95%
Graduation rate (2010)	75%	68%	78%
Poverty rate (2010)	36%	40%	22%
Students per teacher	18.0	15.5	18.1
Average teacher salary	\$49,224	\$42,449	\$45,637
Average years of experience	9.9	12.2	10.9
Percent of teachers in first 3 years	18%	16%	16%

Proposition 301 pay, goals, and results

The District did not submit information required by A.R.S. §15-977(J).