

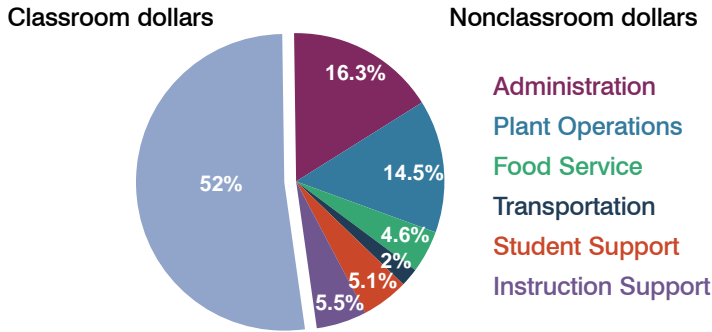
# Gila Bend Unified School District

Maricopa County  
Peer groups: Efficiency 6, Achievement 20  
Legislative district(s): 25

District size: Small  
Students attending: 476  
Number of schools: 2

## OPERATIONAL EFFICIENCY

### Spending by function

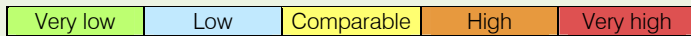


### 5-year trend

Total spending per pupil decreased by 11 percent. Spending in the classroom was very inconsistent year to year, decreasing significantly overall from 57.3 to 52 percent. Spending on administration and instruction support increased significantly, while spending in food service and student support decreased significantly.

### District's cost measures relative to peer group

Operational Area	Measure	District	Peer Average	State Average
Administration	Cost per pupil	\$1,489	\$1,447	\$721
	Students per administrator	40	42	66
Plant Operations	Cost per square foot	\$6.79	\$5.76	\$6.25
	Square footage per student	195	276	146
Food Service	Cost per meal equivalent	\$2.05	\$3.00	\$2.41
Transportation	Cost per mile	\$1.67	\$2.53	\$3.35
	Miles per rider	308	375	282

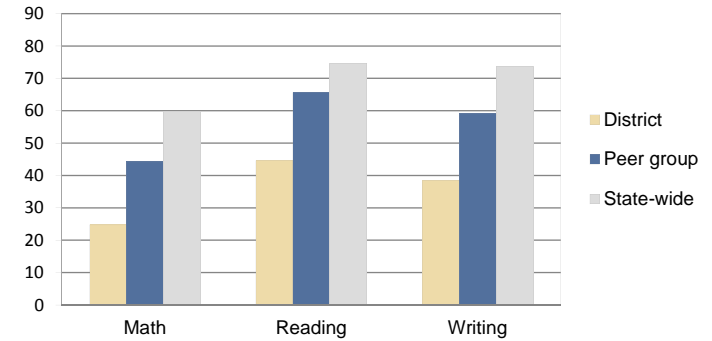


### Per-pupil spending by function

	District		Peer 2010	State 2010	National 2008
	2009	2010			
<b>Total</b>	<b>\$8,828</b>	<b>\$9,135</b>	<b>\$9,887</b>	<b>\$7,609</b>	<b>\$10,297</b>
<b>Classroom dollars</b>	<b>\$4,218</b>	<b>\$4,749</b>	<b>\$5,054</b>	<b>\$4,253</b>	<b>\$6,262</b>
<b>Nonclassroom dollars:</b>	<b>\$4,610</b>	<b>\$4,386</b>	<b>\$4,833</b>	<b>\$3,356</b>	<b>\$4,035</b>
Administration	1,485	1,489	1,447	721	1,109
Plant Operations	1,401	1,323	1,462	914	1,003
Food Service	417	416	424	366	390
Transportation	138	188	445	342	438
Student Support	517	465	625	581	556
Instruction Support	652	505	430	432	539

## STUDENT ACHIEVEMENT AND TEACHER INFORMATION

### Percentage of students meeting state standards (AIMS)



### Adequate Yearly Progress (AYP) toward federal goals

1 school met all applicable AYP objectives for NCLB. 1 school did not because some students did not demonstrate sufficient academic progress and its graduation rate was not sufficient.

### Student and teacher information

Measure	District	Peer Average	State Average
Attendance rate	89%	93%	94%
Graduation rate (2009)	71%	80%	76%
Poverty rate (2009)	32%	26%	21%
Student/teacher ratio	13.2	15.4	17.9
Average teacher salary	\$36,121	\$41,299	\$47,077
Average years' experience	9.2	11.1	10.6
Percent of teachers in first 3 years	56%	20%	20%

### Proposition 301

#### Teacher and other staff pay

On average, each teacher earned \$3,076 in additional pay, and the counselor earned \$2,210.

#### Performance pay plan goals and results

Type of goal	Goal met?
Student achievement	▴
Dropout/graduation rates	-
Student attendance	■
Parent/student satisfaction	■
Teacher attendance	-
Teacher professional development	-
Teacher evaluations	■
Tutoring	-
Other	-

■ = yes, □ = no, ▴ = partially, and - = no goal set