

Gila Bend Unified School District

Maricopa County
Operational peer group: F
Legislative districts: 25

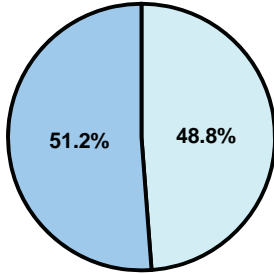
District size: Small
Students attending: 470
Number of schools: 2

OPERATIONAL EFFICIENCY

Average per-pupil spending

District
State

Classroom
\$4,539
\$4,497



Nonclassroom
\$4,330
\$3,411

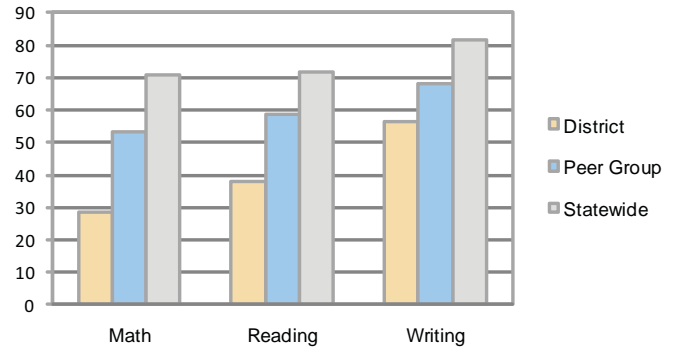
Total
\$8,869
\$7,908

5-year trend

Total spending per pupil increased by 1 percent. Spending in the classroom was very inconsistent year to year and decreased significantly overall from 54 to 51.2 percent. Spending on administration, transportation, and instruction support increased, while spending in other nonclassroom areas varied year to year.

STUDENT ACHIEVEMENT AND TEACHER INFORMATION

Percentage of students meeting state standards (AIMS)



Adequate Yearly Progress (AYP) toward federal goals

2 schools met all applicable AYP objectives for NCLB.

District's cost measures relative to peer group

Operational Area	Measure	District	Peer Average	State Average
Administration	Cost per pupil	\$1,403	\$1,524	\$729
	Students per administrator	39	42	66
Plant Operations	Cost per square foot	\$7.22	\$5.78	\$6.40
	Square footage per student	197	284	144
Food Service	Cost per meal equivalent	\$2.27	\$3.38	\$2.53
Transportation	Cost per mile	\$1.94	\$2.60	\$3.36
	Miles per rider	263	294	271

Very Low Low Comparable High Very High

Student and teacher information

Measure	District	Peer average	State average
Attendance rate	93%	94%	95%
Graduation rate (2008)	71%	73%	75%
Poverty rate	29%	30%	19%
Student/teacher ratio	14.0	14.2	17.1
Average teacher salary	\$37,205	\$41,521	\$45,209
Average years' experience	9.2	10.8	8.3
Percent of teachers in first 3 years	52%	23%	16%

Proposition 301

Teacher pay

On average, each teacher earned \$3,158 in additional salary, and a drop-out prevention specialist earned \$2,193.

Performance pay plan goals and results

Type of goal	Goal met?
Student achievement	▴
Dropout/ graduation rates	■
Student attendance	■
Parent/student satisfaction	■
Teacher attendance	■
Teacher professional development	■
Teacher evaluations	■
Tutoring	■
Other	■

■ = yes, □ = no, and ▴ = partially

Per-pupil spending by function

	District		Peer	State	National
	2008	2009	2009	2009	2007
Total	\$10,181	\$8,869	\$10,596	\$7,908	\$9,683
Classroom dollars	\$4,966	\$4,539	\$5,393	\$4,497	\$5,903
Nonclassroom dollars:	\$5,215	\$4,330	\$5,203	\$3,411	\$3,780
Administration	1,828	1,403	1,524	729	1,050
Plant Operations	1,484	1,424	1,549	920	951
Food Service	616	417	496	382	369
Transportation	216	164	552	343	406
Student Support	729	621	593	594	512
Instruction Support	342	301	481	431	470
Other	0	0	8	12	22