

# Classroom Dollars and Proposition 301 Results

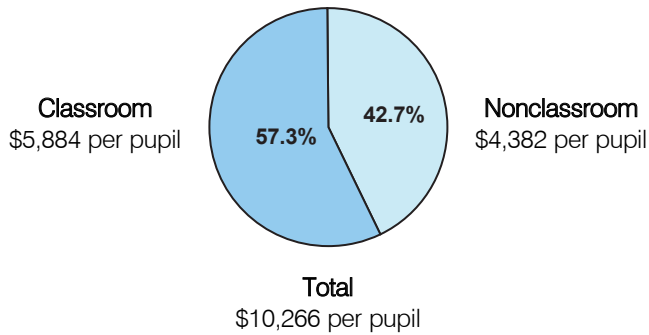
## Gila Bend Unified School District

Maricopa County

District size: Small  
 Students attending: 481  
 Number of schools: 2  
 Number of certified teachers: 36

### Classroom Dollars

Fiscal year 2005

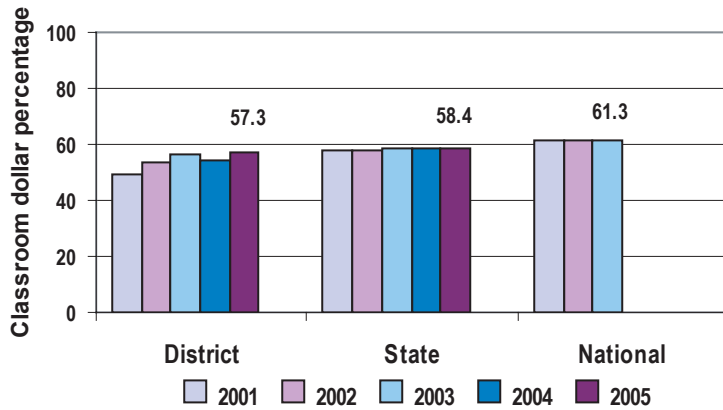


### Comparative Information

	District			State
	2003	2004	2005	2005
Student/teacher ratio	15.8	14.7	13.4	18.3
Average teacher salary	\$31,900	\$34,216	\$36,647	\$39,095
Average years' experience	7.5	8.2	7.1	8.5

Classroom dollar ranking: 88 of 228 districts.

### 5-year comparison



### Expenditures by function

	District					State	National
	2001	2002	2003	2004	2005	2005	2002
Classroom dollars	49.4	53.3	56.4	54.0	57.3	58.4	61.5
Nonclassroom dollars:							
Administration	17.2	16.1	16.0	14.9	12.5	9.5	11.1
Plant operations	17.5	16.4	14.5	17.2	14.6	11.4	9.5
Food service	6.4	5.9	5.9	5.4	6.6	4.8	4.0
Transportation	1.2	1.5	1.9	0.8	0.4	4.1	4.0
Student support	7.1	5.6	5.1	7.7	7.2	7.0	5.0
Instruction support	1.2	1.2	0.2		1.4	4.6	4.7
Other						0.2	0.2

### Proposition 301

#### District-reported 2005 results

##### Teacher pay

- On average, each teacher and counselor earned an additional \$2,979 in salary.

##### Performance

- The District accomplished most of its goals, which were based on district, school, and individual performance.
- School and individual goals were linked to teacher attendance, teacher evaluations, teacher conferences, family nights, and other evening activities that involved parents and created a positive atmosphere.
- The District did not meet its student attendance goal.

##### Menu

- Monies were used solely to increase eligible employee compensation.