

Classroom Dollars and Proposition 301 Results

Gila County Regional School District

Gila County

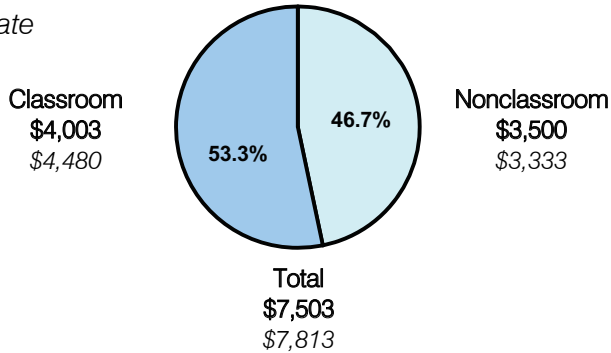
District size: Very Small
 Students attending: 116
 Number of schools: 2
 Number of certified teachers: 7

Classroom Dollars

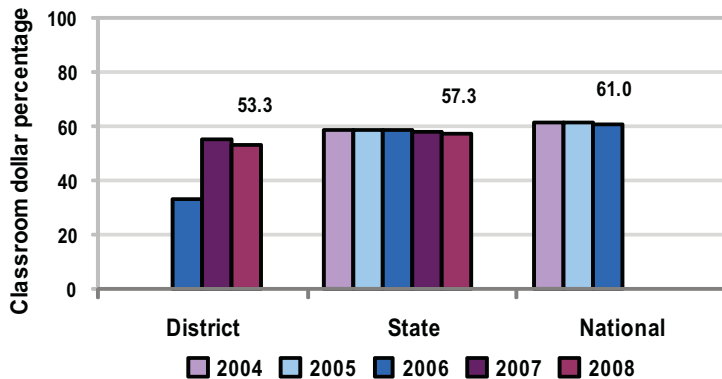
Fiscal year 2008 averages per pupil

District

State



5-year comparison



Expenditures by function

	District					State 2008	National 2006
	2004	2005	2006	2007	2008		
Classroom dollars	n/a	n/a	33.1	55.2	53.3	57.3	61.0
Nonclassroom dollars:	n/a	n/a					
Administration			38.7	23.2	19.0	9.2	10.8
Plant operations			3.5	6.3	8.6	11.3	9.9
Food service				1.9	3.2	4.8	3.8
Transportation			0.5	6.4	4.2	4.4	4.2
Student support			0.5	6.0	10.5	7.4	5.2
Instruction support			23.7	1.0	1.1	5.4	4.9
Other					0.1	0.2	0.2

Comparative Information

	District			State
	2006	2007	2008	2008
Student/teacher ratio	24.0	45.9	16.6	17.3
Average teacher salary	\$24,194	\$36,867	\$46,962	\$44,967
Average years' experience	15.0	15.0	15.0	8.1

Classroom dollar ranking: 146 of 230 districts.

Proposition 301

District-reported 2008 results

Teacher pay

- On average, each teacher earned an additional \$2,158 in salary.

Performance

- The District accomplished its goals, which were based on school and individual performance.
- 1 of the District's schools met Adequate Yearly Progress objectives.
- Teachers attended and participated in weekly staff meetings at least 90 percent of the time and documented 2 to 4 weekly parent contacts.
- Each school's overall score on a parent satisfaction survey was at least 4, based on a scale of 0 to 5.

Menu

- 1 teacher was compensated for completion of curriculum development.