

Classroom Dollars and Proposition 301 Results

Gila County Regional School District

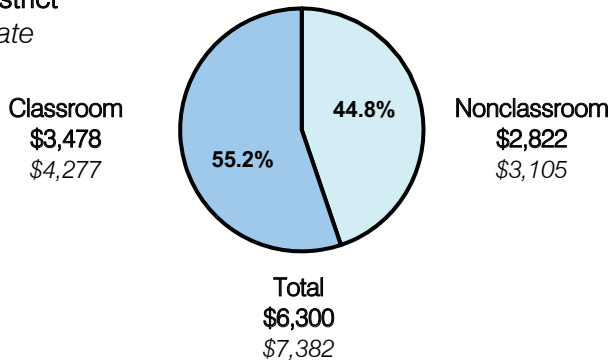
Gila County

District size: Very Small
 Students attending: 92
 Number of schools: 2
 Number of certified teachers: 2

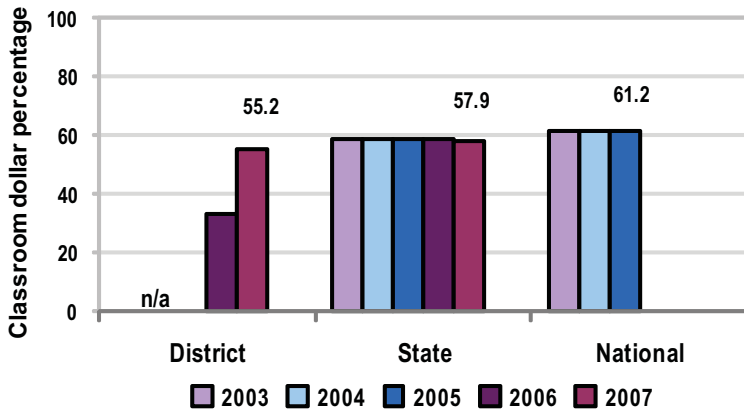
Classroom Dollars

Fiscal year 2007 averages per pupil

District
 State



5-year comparison



Expenditures by function

	District					State 2007	National 2005
	2003	2004	2005	2006	2007		
Classroom dollars	n/a	n/a	n/a	33.1	55.2	57.9	61.2
Nonclassroom dollars:	n/a	n/a	n/a				
Administration				38.7	23.2	9.5	11.0
Plant operations				3.5	6.3	11.3	9.6
Food service					1.9	4.7	3.9
Transportation				0.5	6.4	4.3	4.1
Student support				0.5	6.0	7.3	5.2
Instruction support				23.7	1.0	4.8	4.8
Other						0.2	0.2

Comparative Information

	District			State
	2005	2006	2007	2007
Student/teacher ratio	n/a	24.0	45.9	17.4
Average teacher salary	n/a	\$24,194	\$36,867	\$43,833
Average years' experience	n/a	15.0	15.0	8.1

Classroom dollar ranking: 112 of 229 districts.

Proposition 301

District-reported 2007 results

Teacher Pay

- On average, each teacher earned an additional \$1,611 in salary.

Performance

- The District accomplished its goals, which were based on school and individual performance.
- The District's schools met Adequate Yearly Progress objectives.
- Teachers attended and participated in weekly staffing meetings at least 90 percent of the time and documented at least 5 weekly parent contacts during the second semester.
- Each school's overall score on a parent satisfaction survey was at least 4, based on a scale of 0 to 5.

Menu

- The District did not spend any menu monies during fiscal year 2007.