

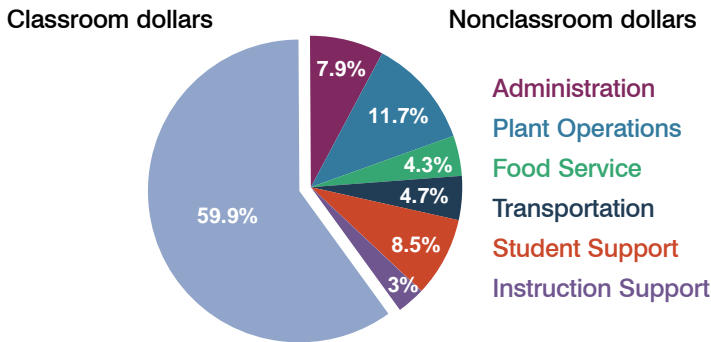
Gilbert Unified School District

Maricopa County
Peer groups: Efficiency Group 1, Achievement Group 1
Legislative district(s): 18, 19, 21 and 22

District size: Very Large
Students attending: 36,599
Number of schools: 40

OPERATIONAL EFFICIENCY

Spending by operational area



5-year trend

Total spending per pupil increased by 6 percent. Spending in the classroom decreased significantly from 63.3 to 59.9 percent. Spending on student support increased, while spending on other nonclassroom areas remained fairly stable.

District's cost measures relative to peer group

Operational Area	Measure	District	Peer Average	State Average
Administration	Cost per pupil	\$501	\$613	\$728
	Students per administrator	81	81	66
Plant Operations	Cost per square foot	\$5.66	\$6.03	\$6.10
	Square footage per student	131	142	152
Food Service	Cost per meal equivalent	\$2.30	\$2.42	\$2.45
Transportation	Cost per mile	\$3.68	\$3.96	\$3.39
	Miles per rider	278	279	283

Very low Low Comparable High Very high

Per-pupil spending by operational area

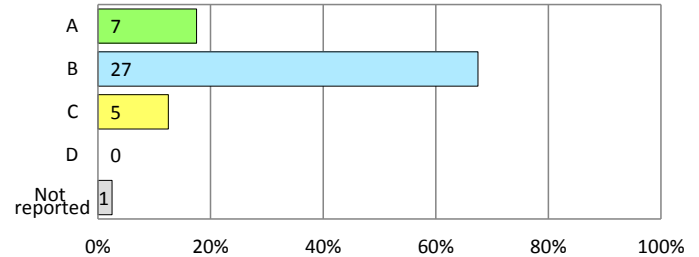
	District		Peer 2011	State 2011	National 2009
	2010	2011			
Total	\$6,617	\$6,369	\$7,123	\$7,485	\$10,591
Classroom dollars	\$4,106	\$3,817	\$4,080	\$4,098	\$6,456
Nonclassroom dollars:	\$2,511	\$2,552	\$3,043	\$3,387	\$4,135
Administration	473	501	613	728	1,147
Plant Operations	749	744	855	927	1,033
Food Service	289	272	317	375	404
Transportation	291	302	330	352	443
Student Support	531	540	556	571	573
Instruction Support	178	193	372	434	535

STUDENT ACHIEVEMENT AND TEACHER INFORMATION

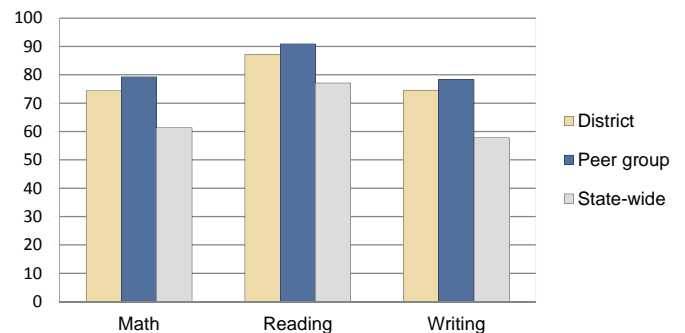
District and school letter grades

District grade: **B**

School grades (number and percentage):



Percentage of students meeting state standards (AIMS)



Student and teacher information

Measure	District	Peer Average	State Average
Attendance rate	96%	95%	95%
Graduation rate (2010)	93%	93%	78%
Poverty rate (2010)	10%	8%	22%
Students per teacher	17.3	18.4	18.1
Average teacher salary	\$43,795	\$41,257	\$45,637
Average years of experience	10.9	10.0	10.9
Percent of teachers in first 3 years	10%	15%	16%

Proposition 301 pay, goals, and results

Average additional salary earned by teachers: \$1,754

Type of goal	Goal met?
Student achievement	■
Dropout/graduation rates	■
Student attendance	-
Parent/student satisfaction	-
Teacher attendance	-
Teacher professional development	■
Teacher evaluations	-
Tutoring	-
Other	-

■ = yes, □ = no, ▴ = partially, and - = no goal set