

# Classroom Dollars and Proposition 301 Results

## Glendale Elementary School District

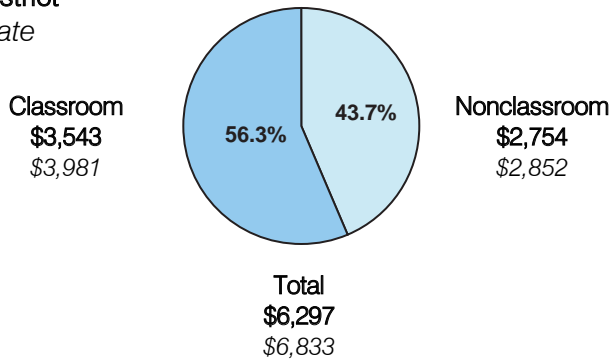
Maricopa County

District size: Large  
 Students attending: 13,287  
 Number of schools: 17  
 Number of certified teachers: 694

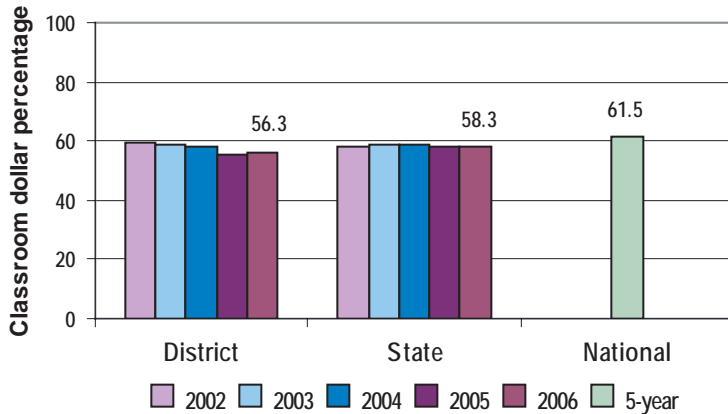
### Classroom Dollars

Fiscal year 2006 averages per pupil

District  
 State



### 5-year comparison



### Expenditures by function

	District					State 2006	National 5-year
	2002	2003	2004	2005	2006		
Classroom dollars	59.3	59.1	58.3	55.2	56.3	58.3	61.5
Nonclassroom dollars:							
Administration	9.9	10.3	10.0	10.6	10.8	9.4	11.0
Plant operations	9.7	9.1	9.9	10.1	9.8	11.2	9.6
Food service	6.4	5.8	6.0	6.5	6.3	4.7	3.9
Transportation	2.8	3.1	2.8	2.8	2.6	4.2	4.0
Student support	5.2	4.7	4.9	5.3	5.2	7.2	5.1
Instruction support	6.7	7.9	8.1	9.5	9.0	4.8	4.7
Other						0.2	0.2

### Comparative Information

	District			State 2006
	2004	2005	2006	
Student/teacher ratio	19.2	20.3	19.1	17.7
Average teacher salary	\$38,194	\$40,435	\$41,004	\$42,967
Average years' experience	7.7	7.8	7.0	8.3

Classroom dollar ranking: 101 of 229 districts.

### Proposition 301

#### District-reported 2006 results

##### Teacher pay

- On average, each teacher earned an additional \$4,776 in salary, and each librarian, counselor, facilitator, and teacher coach earned \$1,626 to \$2,085 in additional salary.

##### Performance

- The District accomplished its goals, which were similar to the prior fiscal year's goals and were based on school and individual performance.
- Students' AIMS test scores in reading, writing, and math increased.
- Teachers completed "action research plans" and were evaluated on their results.

##### Menu

- Monies were primarily used to increase teacher compensation to attract and retain highly qualified teachers.
- The District hired approximately 3 full-time equivalent teachers to reduce class size.
- 10 teachers provided after-school tutoring to approximately 90 students whose AIMS test reading and math scores indicated a need for intervention.
- 776 teachers earned up to \$300 each for participating in 8 hours of professional development in assessment data analysis.