

Classroom Dollars and Proposition 301 Results

Glendale Elementary School District

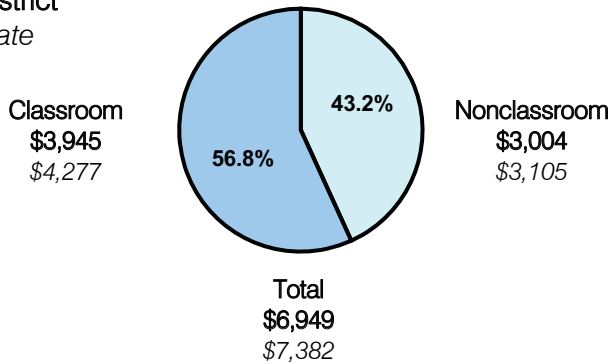
Maricopa County

District size: Large
 Students attending: 13,057
 Number of schools: 17
 Number of certified teachers: 726

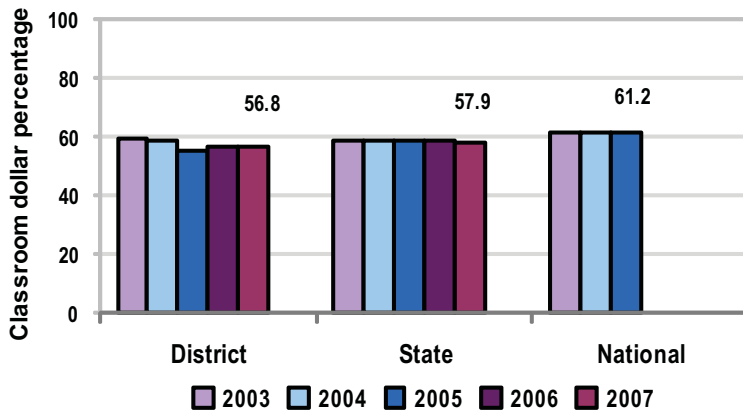
Classroom Dollars

Fiscal year 2007 averages per pupil

District
 State



5-year comparison



Expenditures by function

	Percentage					State 2007	National 2005
	District						
	2003	2004	2005	2006	2007		
Classroom dollars	59.1	58.3	55.2	56.3	56.8	57.9	61.2
Nonclassroom dollars:							
Administration	10.3	10.0	10.6	10.8	11.2	9.5	11.0
Plant operations	9.1	9.9	10.1	9.8	10.0	11.3	9.6
Food service	5.8	6.0	6.5	6.3	6.6	4.7	3.9
Transportation	3.1	2.8	2.8	2.6	2.9	4.3	4.1
Student support	4.7	4.9	5.3	5.2	5.2	7.3	5.2
Instruction support	7.9	8.1	9.5	9.0	7.3	4.8	4.8
Other						0.2	0.2

Comparative Information

	District			State 2007
	2005	2006	2007	
Student/teacher ratio	20.3	19.1	18.0	17.4
Average teacher salary	\$40,435	\$41,004	\$39,869	\$43,833
Average years' experience	7.8	7.0	6.3	8.1

Classroom dollar ranking: 84 of 229 districts.

Proposition 301

District-reported 2007 results

Teacher Pay

- On average, each teacher earned \$4,659 in additional salary, and each librarian, advisor, teacher coach, coordinator, facilitator, intervention specialist, and trainer earned between \$1,064 and \$1,496. These amounts included performance pay for fiscal year 2006 performance.

Performance

- The District accomplished its goals, which were based on school and individual performance.
- Schools had to meet Adequate Yearly Progress objectives and receive a "Performing" or better label from ADE for AZ LEARNS, or students had to demonstrate progress on AIMS reading, writing, and math scores from one year to the next.

Menu

- Monies were used to pay tutors for AIMS intervention activities.