

# Classroom Dollars and Proposition 301 Results

## Glendale Elementary School District

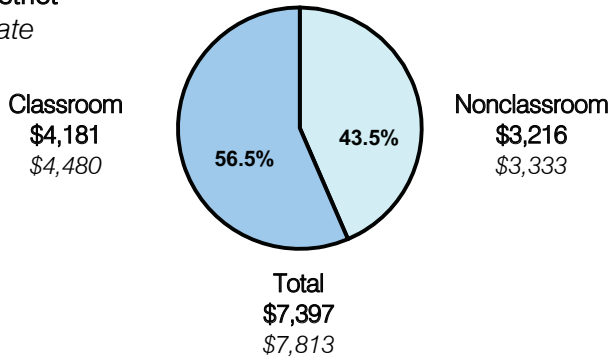
Maricopa County

District size: Large  
 Students attending: 13,031  
 Number of schools: 17  
 Number of certified teachers: 745

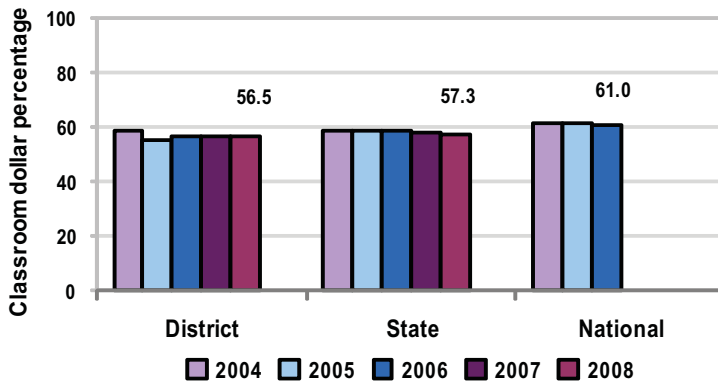
### Classroom Dollars

Fiscal year 2008 averages per pupil

District  
 State



5-year comparison



### Expenditures by function

	Percentage					State 2008	National 2006
	District						
	2004	2005	2006	2007	2008		
Classroom dollars	58.3	55.2	56.3	56.8	56.5	57.3	61.0
Nonclassroom dollars:							
Administration	10.0	10.6	10.8	11.2	10.9	9.2	10.8
Plant operations	9.9	10.1	9.8	10.0	9.7	11.3	9.9
Food service	6.0	6.5	6.3	6.6	7.0	4.8	3.8
Transportation	2.8	2.8	2.6	2.9	3.0	4.4	4.2
Student support	4.9	5.3	5.2	5.2	5.2	7.4	5.2
Instruction support	8.1	9.5	9.0	7.3	7.7	5.4	4.9
Other						0.2	0.2

### Comparative Information

	District			State
	2006	2007	2008	2008
Student/teacher ratio	19.1	18.0	17.5	17.3
Average teacher salary	\$41,004	\$39,869	\$43,152	\$44,967
Average years' experience	7.0	6.3	5.9	8.1

Classroom dollar ranking: 90 of 230 districts.

### Proposition 301

#### District-reported 2008 results

##### Teacher pay

- On average, each teacher earned \$6,926 in additional salary, and each librarian, counselor, advisor, reading coach, and trainer earned between \$869 and \$1,043 in additional salary.

##### Performance

- The District accomplished most of its goals, which were based on school and individual performance.
- The student achievement goals required an increase in the percentage of students meeting or exceeding reading and math standards on the AIMS test. Half of these goals were achieved.
- Most teachers completed projects designed to increase student performance in reading, writing, or math.
- The results of a survey indicate that parents are satisfied with the District's performance.

##### Menu

- Monies were primarily used to increase eligible teacher compensation.
- Teachers participated in professional development activities.