

Glendale Elementary School District

Maricopa County
Operational peer group: H
Legislative districts: 10, 12, 13

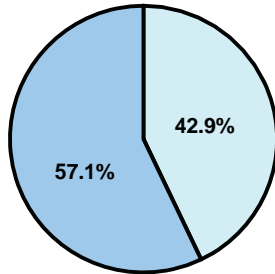
District size: Large
Students attending: 12,706
Number of schools: 17

OPERATIONAL EFFICIENCY

Average per-pupil spending

District
State

Classroom
\$4,240
\$4,497



Nonclassroom
\$3,187
\$3,411

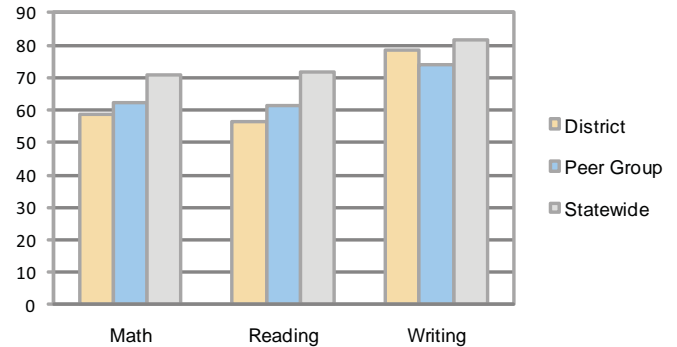
Total
\$7,427
\$7,908

5-year trend

Total spending per pupil increased by 30 percent. Spending in the classroom varied year to year and decreased overall from 58.3 to 57.1 percent. Spending on food service increased, while spending in other nonclassroom areas remained fairly stable.

STUDENT ACHIEVEMENT AND TEACHER INFORMATION

Percentage of students meeting state standards (AIMS)



Adequate Yearly Progress (AYP) toward federal goals

12 schools met all applicable AYP objectives for NCLB. 5 schools did not because some students did not demonstrate sufficient academic progress.

District's cost measures relative to peer group

Operational Area	Measure	District	Peer Average	State Average
Administration	Cost per pupil	\$739	\$705	\$729
	Students per administrator	66	67	66
Plant Operations	Cost per square foot	\$7.09	\$6.62	\$6.40
	Square footage per student	106	120	144
Food Service	Cost per meal equivalent	\$2.47	\$2.44	\$2.53
Transportation	Cost per mile	\$6.69	\$4.77	\$3.36
	Miles per rider	110	197	271

Very Low Low Comparable High Very High

Student and teacher information

Measure	District	Peer average	State average
Attendance rate	95%	95%	95%
Graduation rate (2008)	N/A	74%	75%
Poverty rate	24%	28%	19%
Student/teacher ratio	18.2	18.0	17.1
Average teacher salary	\$47,905	\$48,318	\$45,209
Average years' experience	7.1	8.9	8.3
Percent of teachers in first 3 years	49%	33%	16%

Proposition 301

Teacher pay

On average, each teacher earned an additional \$7,587 in salary, and each librarian, student advisor, and instructional specialist earned between \$2,621 and \$4,096.

Performance pay plan goals and results

Type of goal	Goal met?
Student achievement	■
Dropout/ graduation rates	
Student attendance	
Parent/student satisfaction	■
Teacher attendance	
Teacher professional development	▲
Teacher evaluations	
Tutoring	
Other	

■ = yes, □ = no, and ▲ = partially

Per-pupil spending by function

	District		Peer	State	National
	2008	2009	2009	2009	2007
Total	\$7,397	\$7,427	\$7,808	\$7,908	\$9,683
Classroom dollars	\$4,120	\$4,240	\$4,486	\$4,497	\$5,903
Nonclassroom dollars:	\$3,277	\$3,187	\$3,322	\$3,411	\$3,780
Administration	770	739	705	729	1,050
Plant Operations	771	748	786	920	951
Food Service	518	524	494	382	369
Transportation	220	207	272	343	406
Student Support	397	406	536	594	512
Instruction Support	601	563	529	431	470
Other	0	0	0	12	22