

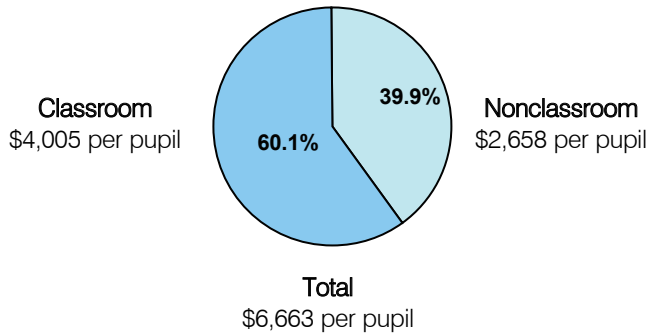
Classroom Dollars and Proposition 301 Results

Glendale Union High School District

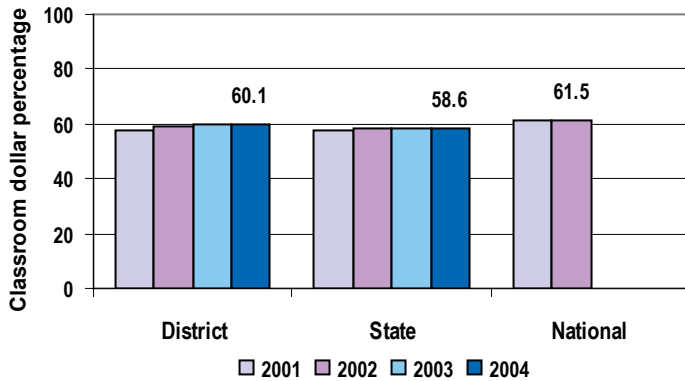
District size: Large
 Students attending: 14,377
 Number of schools: 11
 Number of certified teachers: 680

Classroom Dollars

Fiscal year 2004



4-year comparison



Expenditures by function

	District				State 2004	National 2001
	2001	2002	2003	2004		
Classroom dollars	57.3	59.1	59.7	60.1	58.6	61.5
Nonclassroom dollars:						
Administration	11.4	10.7	9.9	9.1	9.5	10.9
Plant operations	14.0	12.9	12.8	12.8	11.7	9.7
Food service	3.6	3.6	3.4	3.7	4.7	4.0
Transportation	2.1	2.2	2.7	2.7	4.0	4.1
Student support	5.6	5.5	5.6	5.6	7.0	5.0
Instruction support	5.7	5.5	5.4	5.5	4.3	4.6
Other	0.3	0.5	0.5	0.5	0.2	0.2

Comparative Information

	District			State 2004
	2002	2003	2004	
Student/teacher ratio	20.6	21.1	21.1	18.2
Average teacher salary	\$45,411	\$46,939	\$47,358	\$38,534
Average years' experience	10.2	10.1	9.7	8.7

Classroom dollar ranking: 45 of 227 districts.

Proposition 301

District-reported 2004 results

Teacher pay

- On average, each teacher earned \$4,754 and each counselor and librarian earned between \$5,718 and \$5,844 in additional salary.

Performance

- The District accomplished its goals, which were based on school performance.
- At each school, students' scores on standardized tests and other measures were required to meet a set performance standard or show improvement compared to last year, on average.
- Each school's dropout rate was required to be 6 percent or lower or show improvement compared to last year.
- Each school was required to receive at least an 80 percent rating on a parent satisfaction index or show improvement compared to last year.
- Schools also set individual school-level goals.

Menu

- Monies were used to increase eligible employee compensation, including pay for working an additional 3 school days on the District's extended 180-day calendar.