

# Classroom Dollars and Proposition 301 Results

## Glendale Union High School District

Maricopa County

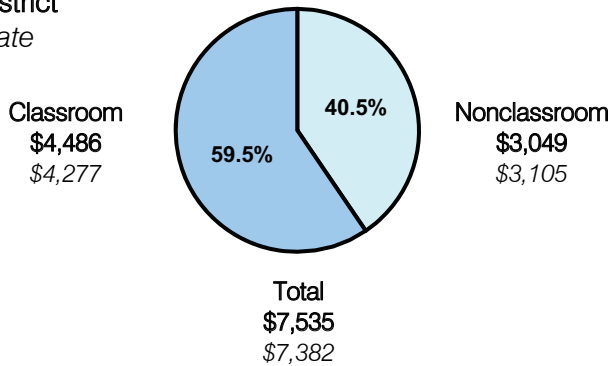
District size: Large  
 Students attending: 14,896  
 Number of schools: 10  
 Number of certified teachers: 742

### Classroom Dollars

Fiscal year 2007 averages per pupil

District

State

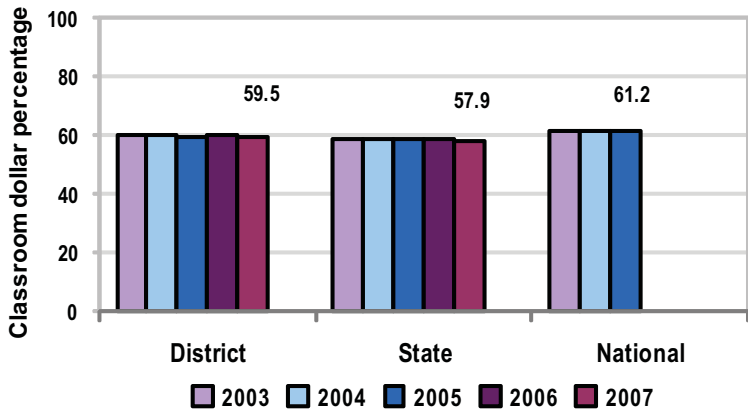


### Comparative Information

	District			State
	2005	2006	2007	2007
Student/teacher ratio	20.6	20.6	20.1	17.4
Average teacher salary	\$48,509	\$50,899	\$48,182	\$43,833
Average years' experience	9.2	9.2	8.9	8.1

Classroom dollar ranking: 46 of 229 districts.

### 5-year comparison



### Expenditures by function

	District					State	National
	2003	2004	2005	2006	2007	2007	2005
Classroom dollars	59.7	60.1	59.4	59.8	59.5	57.9	61.2
Nonclassroom dollars:							
Administration	9.9	9.1	8.9	8.1	7.7	9.5	11.0
Plant operations	12.8	12.8	13.2	13.8	14.6	11.3	9.6
Food service	3.4	3.7	3.9	3.8	3.6	4.7	3.9
Transportation	2.7	2.7	2.9	2.9	3.0	4.3	4.1
Student support	5.6	5.6	5.7	5.9	5.9	7.3	5.2
Instruction support	5.4	5.5	5.5	5.3	5.3	4.8	4.8
Other	0.5	0.5	0.5	0.4	0.4	0.2	0.2

### Proposition 301

#### District-reported 2007 results

##### Teacher pay

- On average, each teacher earned an additional \$6,654, and each librarian and counselor earned between \$7,669 and \$8,374, which included performance pay for fiscal year 2006 performance.

##### Performance

- The District accomplished most of its goals, which were similar to the prior fiscal year's goals and were based on district and school performance.
- Students had to demonstrate success or improvement on standardized tests and district assessments.
- The District's schools had to earn AZ LEARNS labels of "Performing" or better and demonstrate Adequate Yearly Progress.
- Other goals were linked to student participation in extracurricular activities, dropout-graduation rates, and the results of a parent-student satisfaction survey.

##### Menu

- Monies were used primarily to increase eligible employee compensation.
- Monies were also used to pay for computer-based learning for 250 students at risk for dropping out.