

Classroom Dollars and Proposition 301 Results

Glendale Union High School District

Maricopa County

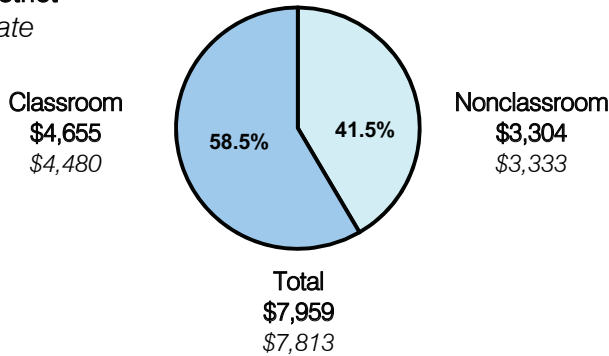
District size: Large
 Students attending: 14,866
 Number of schools: 10
 Number of certified teachers: 738

Classroom Dollars

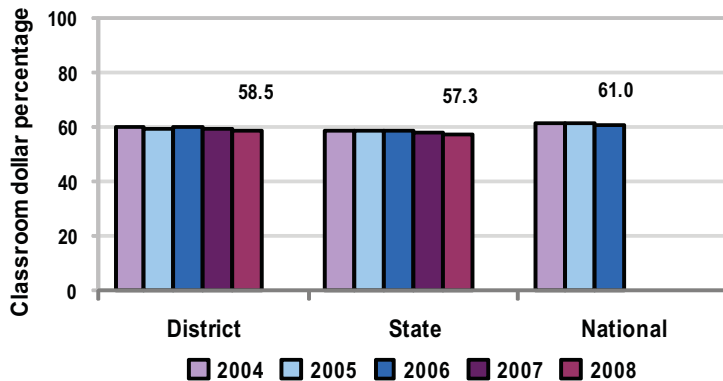
Fiscal year 2008 averages per pupil

District

State



5-year comparison



Expenditures by function

	District					State 2008	National 2006
	2004	2005	2006	2007	2008		
Classroom dollars	60.1	59.4	59.8	59.5	58.5	57.3	61.0
Nonclassroom dollars:							
Administration	9.1	8.9	8.1	7.7	7.6	9.2	10.8
Plant operations	12.8	13.2	13.8	14.6	14.9	11.3	9.9
Food service	3.7	3.9	3.8	3.6	3.7	4.8	3.8
Transportation	2.7	2.9	2.9	3.0	3.1	4.4	4.2
Student support	5.6	5.7	5.9	5.9	6.4	7.4	5.2
Instruction support	5.5	5.5	5.3	5.3	5.4	5.4	4.9
Other	0.5	0.5	0.4	0.4	0.4	0.2	0.2

Comparative Information

	District			State 2008
	2006	2007	2008	
Student/teacher ratio	20.6	20.1	20.1	17.3
Average teacher salary	\$50,899	\$48,182	\$50,914	\$44,967
Average years' experience	9.2	8.9	8.9	8.1

Classroom dollar ranking: 58 of 230 districts.

Proposition 301

District-reported 2008 results

Teacher pay

- On average, each teacher, librarian, and counselor earned between \$8,190 and \$10,391 in additional salary, which included performance pay for fiscal year 2007 performance.

Performance

- The District accomplished most of its goals, which were the same as the prior fiscal year's goals and were based on district and school performance.
- Students had to demonstrate success or improvement on standardized tests and district assessments.
- The District's schools had to earn AZ LEARNS labels of "Performing" or better and demonstrate Adequate Yearly Progress.
- Other goals were linked to student participation in extracurricular activities, dropout-graduation rates, the results of a parent-student satisfaction survey, and the results of a post-graduate survey.

Menu

- Monies were used primarily to increase eligible employee compensation.
- Monies were also used to pay for computer-based learning for 250 students at risk for dropping out.