

# Glendale Union High School District

Maricopa County  
Operational peer group: B  
Legislative districts: 6, 10, 11, 12, 13, 14, 15

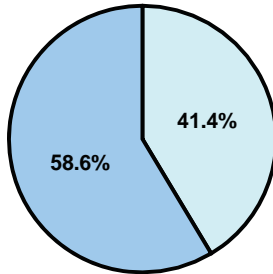
District size: Large  
Students attending: 14,705  
Number of schools: 10

## OPERATIONAL EFFICIENCY

### Average per-pupil spending

District  
State

**Classroom**  
\$4,690  
\$4,497



**Nonclassroom**  
\$3,318  
\$3,411

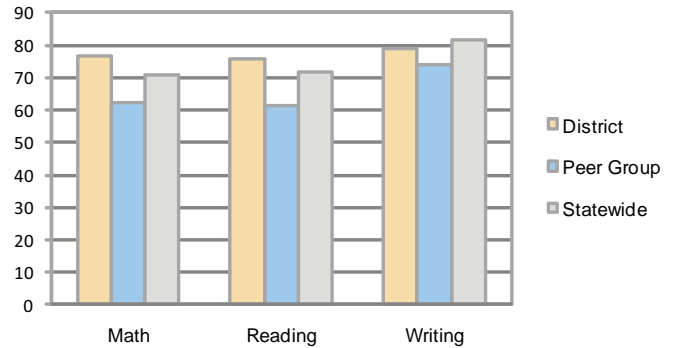
**Total**  
\$8,008  
\$7,908

### 5-year trend

Total spending per pupil increased by 20 percent. Spending in the classroom was fairly stable and decreased overall from 60.1 to 58.6 percent. Spending on administration decreased, spending on plant operations and student support increased, and spending in other nonclassroom areas remained fairly stable.

## STUDENT ACHIEVEMENT AND TEACHER INFORMATION

### Percentage of students meeting state standards (AIMS)



### Adequate Yearly Progress (AYP) toward federal goals

5 schools met all applicable AYP objectives for NCLB. 4 did not because some students did not demonstrate sufficient academic progress. 1 did not have a sufficient graduation rate.

### Student and teacher information

Measure	District	Peer average	State average
Attendance rate	95%	95%	95%
Graduation rate (2008)	87%	74%	75%
Poverty rate	22%	28%	19%
Student/teacher ratio	19.0	18.0	17.1
Average teacher salary	\$50,149	\$48,318	\$45,209
Average years' experience	11.7	8.9	8.3
Percent of teachers in first 3 years	14%	33%	16%

### District's cost measures relative to peer group

Operational Area	Measure	District	Peer Average	State Average
Administration	Cost per pupil	\$639	\$634	\$729
	Students per administrator	74	67	66
Plant Operations	Cost per square foot	\$7.40	\$6.67	\$6.40
	Square footage per student	155	142	144
Food Service	Cost per meal equivalent	\$2.76	\$2.64	\$2.53
Transportation	Cost per mile	\$4.43	\$3.44	\$3.36
	Miles per rider	487	290	271

Very Low   Low   Comparable   High   Very High

### Per-pupil spending by function

	District 2008	District 2009	Peer 2009	State 2009	National 2007
<b>Total</b>	<b>\$7,959</b>	<b>\$8,008</b>	<b>\$7,523</b>	<b>\$7,908</b>	<b>\$9,683</b>
<b>Classroom dollars</b>	<b>\$4,624</b>	<b>\$4,690</b>	<b>\$4,247</b>	<b>\$4,497</b>	<b>\$5,903</b>
<b>Nonclassroom dollars:</b>	<b>\$3,335</b>	<b>\$3,318</b>	<b>\$3,276</b>	<b>\$3,411</b>	<b>\$3,780</b>
Administration	662	639	634	729	1,050
Plant Operations	1,157	1,147	936	920	951
Food Service	291	310	310	382	369
Transportation	251	250	359	343	406
Student Support	507	517	571	594	512
Instruction Support	432	419	443	431	470
Other	35	36	23	12	22

### Proposition 301

#### Teacher pay

On average, each teacher, librarian, and counselor earned between \$6,767 and \$8,443 in additional salary, which includes performance pay for fiscal year 2008 performance.

#### Performance pay plan goals and results

Type of goal	Goal met?
Student achievement	▴
Dropout/ graduation rates	■
Student attendance	
Parent/student satisfaction	■
Teacher attendance	
Teacher professional development	
Teacher evaluations	
Tutoring	■
Other	■

■ = yes, □ = no, and ▴ = partially