

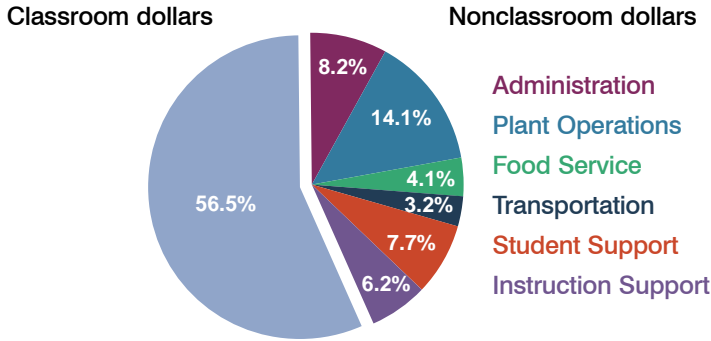
# Glendale Union High School District

Maricopa County  
Peer groups: Efficiency Group 2, Achievement Group 10  
Legislative district(s): 6, 10, 11, 12, 13, 14 and 15

District size: Large  
Students attending: 14,633  
Number of schools: 10

## OPERATIONAL EFFICIENCY

### Spending by operational area



### 5-year trend

Total spending per pupil increased by 12 percent. Spending in the classroom decreased significantly from 59.8 to 56.5 percent. Spending on student support increased, while spending on other nonclassroom areas remained stable.

### District's cost measures relative to peer group

Operational Area	Measure	District	Peer Average	State Average
Administration	Cost per pupil	\$643	\$611	\$728
	Students per administrator	74	70	66
Plant Operations	Cost per square foot	\$7.09	\$6.25	\$6.10
	Square footage per student	156	147	152
Food Service	Cost per meal equivalent	\$2.59	\$2.59	\$2.45
Transportation	Cost per mile	\$4.92	\$3.34	\$3.39
	Miles per rider	400	324	283

Very low   Low   Comparable   High   Very high

### Per-pupil spending by operational area

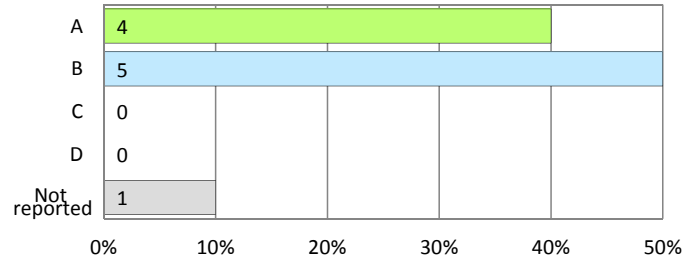
	District		Peer 2011	State 2011	National 2009
	2010	2011			
<b>Total</b>	<b>\$7,621</b>	<b>\$7,822</b>	<b>\$6,961</b>	<b>\$7,485</b>	<b>\$10,591</b>
<b>Classroom dollars</b>	<b>\$4,372</b>	<b>\$4,423</b>	<b>\$3,867</b>	<b>\$4,098</b>	<b>\$6,456</b>
<b>Nonclassroom dollars:</b>	<b>\$3,249</b>	<b>\$3,399</b>	<b>\$3,094</b>	<b>\$3,387</b>	<b>\$4,135</b>
Administration	628	643	611	728	1,147
Plant Operations	1,075	1,105	909	927	1,033
Food Service	307	316	304	375	404
Transportation	237	253	333	352	443
Student Support	557	597	518	571	573
Instruction Support	445	485	419	434	535

## STUDENT ACHIEVEMENT AND TEACHER INFORMATION

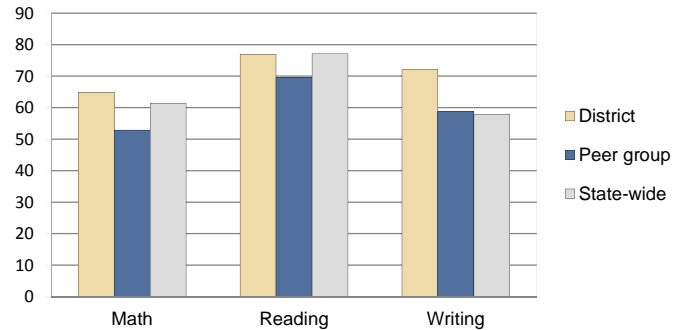
### District and school letter grades

District grade: **A**

### School grades (number and percentage):



### Percentage of students meeting state standards (AIMS)



### Student and teacher information

Measure	District	Peer Average	State Average
Attendance rate	95%	95%	95%
Graduation rate (2010)	87%	83%	78%
Poverty rate (2010)	24%	30%	22%
Students per teacher	20.5	20.5	18.1
Average teacher salary	\$49,604	\$49,055	\$45,637
Average years of experience	11.9	11.5	10.9
Percent of teachers in first 3 years	10%	11%	16%

### Proposition 301 pay, goals, and results

Average additional salary earned by teachers: \$4,224

Type of goal	Goal met?
Student achievement	▀
Dropout/graduation rates	■
Student attendance	-
Parent/student satisfaction	■
Teacher attendance	-
Teacher professional development	-
Teacher evaluations	-
Tutoring	■
Other	▀

■ = yes, □ = no, ▀ = partially, and - = no goal set