

Globe Unified School District

Gila County
Operational peer group: E
Legislative districts: 5

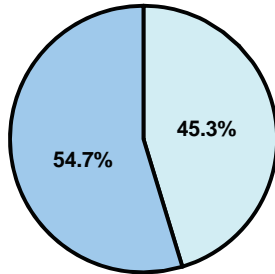
District size: Medium
Students attending: 1,791
Number of schools: 3

OPERATIONAL EFFICIENCY

Average per-pupil spending

District
State

Classroom
\$4,036
\$4,497



Nonclassroom
\$3,342
\$3,411

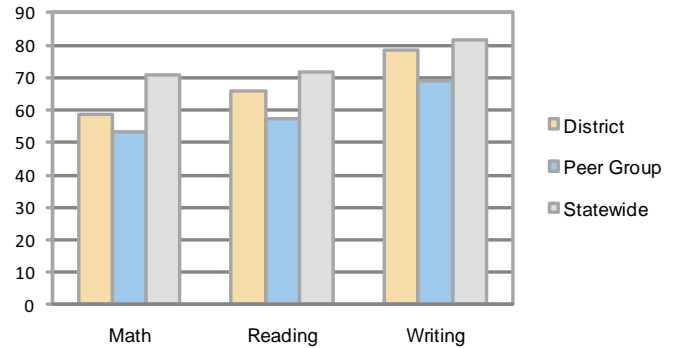
Total
\$7,378
\$7,908

5-year trend

Total spending per pupil increased by 28 percent. Spending in the classroom varied year to year and decreased significantly overall from 58.1 to 54.7 percent. Spending on plant operations, student support, and instruction support increased, while spending in other nonclassroom areas remained fairly stable.

STUDENT ACHIEVEMENT AND TEACHER INFORMATION

Percentage of students meeting state standards (AIMS)



Adequate Yearly Progress (AYP) toward federal goals

3 schools met all applicable AYP objectives for NCLB.

Student and teacher information

Measure	District	Peer average	State average
Attendance rate	96%	93%	95%
Graduation rate (2008)	78%	70%	75%
Poverty rate	20%	31%	19%
Student/teacher ratio	17.1	14.9	17.1
Average teacher salary	\$37,916	\$41,086	\$45,209
Average years' experience	11.9	11.1	8.3
Percent of teachers in first 3 years	24%	20%	16%

District's cost measures relative to peer group

Operational Area	Measure	District	Peer Average	State Average
Administration	Cost per pupil	\$904	\$1,148	\$729
	Students per administrator	58	51	66
Plant Operations	Cost per square foot	\$5.10	\$5.49	\$6.40
	Square footage per student	188	253	144
Food Service	Cost per meal equivalent	\$3.34	\$3.07	\$2.53
Transportation	Cost per mile	\$2.26	\$2.53	\$3.36
	Miles per rider	223	359	271

Very Low Low Comparable High Very High

Proposition 301

Teacher pay

On average, each teacher earned \$4,962 in additional salary, and each librarian and counselor earned between \$3,203 and \$6,125.

Performance pay plan goals and results

Type of goal	Goal met?
Student achievement	■
Dropout/ graduation rates	
Student attendance	
Parent/student satisfaction	
Teacher attendance	
Teacher professional development	
Teacher evaluations	
Tutoring	
Other	

■ = yes, □ = no, and ▤ = partially

Per-pupil spending by function

	District		Peer	State	National
	2008	2009	2009	2009	2007
Total	\$7,210	\$7,378	\$9,562	\$7,908	\$9,683
Classroom dollars	\$3,875	\$4,036	\$4,925	\$4,497	\$5,903
Nonclassroom dollars:	\$3,335	\$3,342	\$4,637	\$3,411	\$3,780
Administration	933	904	1,148	729	1,050
Plant Operations	1,058	959	1,379	920	951
Food Service	370	421	444	382	369
Transportation	361	355	554	343	406
Student Support	213	312	749	594	512
Instruction Support	400	380	356	431	470
Other	0	11	7	12	22