

Classroom Dollars and Proposition 301 Results

Globe Unified School District

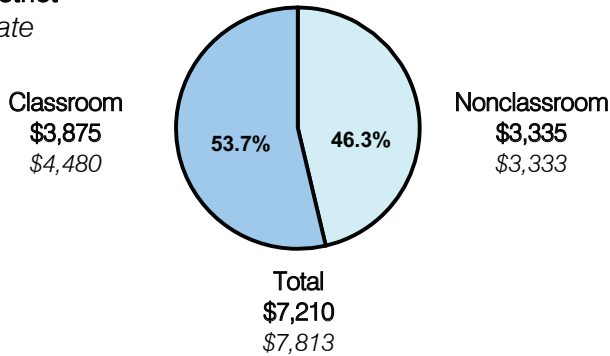
Gila County

District size: Medium
 Students attending: 1,811
 Number of schools: 3
 Number of certified teachers: 96

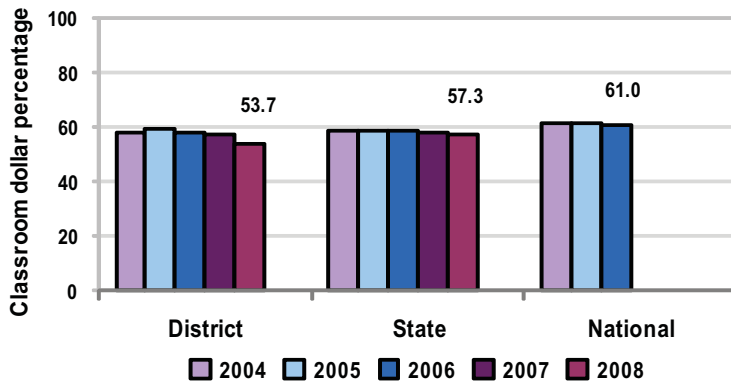
Classroom Dollars

Fiscal year 2008 averages per pupil

District
 State



5-year comparison



Expenditures by function

	District					State 2008	National 2006
	2004	2005	2006	2007	2008		
Classroom dollars	58.1	59.4	57.8	57.0	53.7	57.3	61.0
Nonclassroom dollars:							
Administration	13.4	11.8	12.4	12.9	12.9	9.2	10.8
Plant operations	11.7	12.6	13.7	14.2	14.7	11.3	9.9
Food service	5.4	5.6	5.2	4.9	5.2	4.8	3.8
Transportation	4.8	4.9	4.8	4.3	5.0	4.4	4.2
Student support	2.7	2.7	2.4	2.4	3.0	7.4	5.2
Instruction support	3.9	3.0	3.7	4.3	5.5	5.4	4.9
Other						0.2	0.2

Comparative Information

	District			State 2008
	2006	2007	2008	
Student/teacher ratio	18.4	17.8	18.8	17.3
Average teacher salary	\$36,849	\$36,637	\$40,203	\$44,967
Average years' experience	9.2	9.3	9.9	8.1

Classroom dollar ranking: 141 of 230 districts.

Proposition 301

District-reported 2008 results

Teacher pay

- On average, each teacher earned an additional \$6,811 in salary, and each librarian and counselor earned between \$6,749 and \$6,765.

Performance

- The District accomplished its goals, which were the same as the prior fiscal year's goals and were based on individual performance.
- Students showed measurable growth in core areas where needs had been identified.
- Teachers attended at least 18 hours of district-provided professional development.
- Teachers made at least 20 positive contacts with parents.

Menu

- Monies were used solely to increase eligible employee compensation.