

Classroom Dollars and Proposition 301 Results

Globe Unified School District

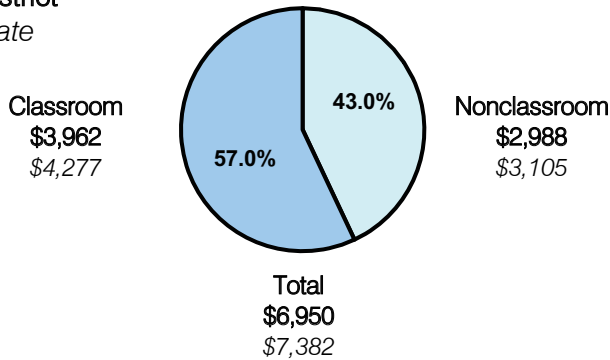
Gila County

District size: Medium
 Students attending: 1,888
 Number of schools: 3
 Number of certified teachers: 106

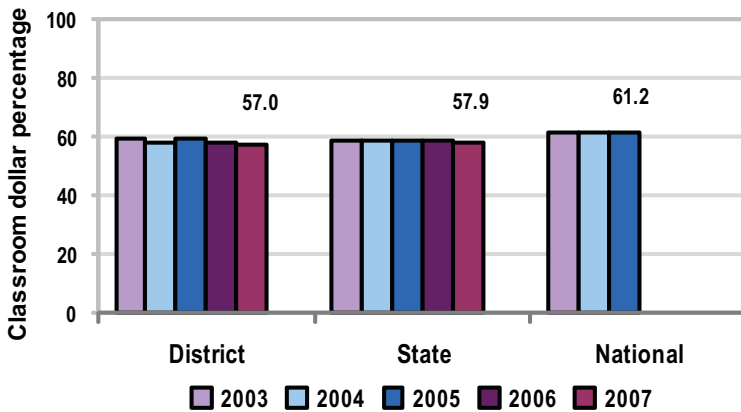
Classroom Dollars

Fiscal year 2007 averages per pupil

District
 State



5-year comparison



Expenditures by function

	District					State 2007	National 2005
	2003	2004	2005	2006	2007		
Classroom dollars	59.0	58.1	59.4	57.8	57.0	57.9	61.2
Nonclassroom dollars:							
Administration	13.7	13.4	11.8	12.4	12.9	9.5	11.0
Plant operations	11.3	11.7	12.6	13.7	14.2	11.3	9.6
Food service	5.3	5.4	5.6	5.2	4.9	4.7	3.9
Transportation	4.7	4.8	4.9	4.8	4.3	4.3	4.1
Student support	2.9	2.7	2.7	2.4	2.4	7.3	5.2
Instruction support	3.1	3.9	3.0	3.7	4.3	4.8	4.8
Other						0.2	0.2

Comparative Information

	District			State 2007
	2005	2006	2007	
Student/teacher ratio	18.7	18.4	17.8	17.4
Average teacher salary	\$36,837	\$36,849	\$36,637	\$43,833
Average years' experience	8.9	9.2	9.3	8.1

Classroom dollar ranking: 77 of 229 districts.

Proposition 301

District-reported 2007 results

Teacher Pay

- On average, each teacher earned an additional \$5,312 in salary and each librarian and counselor earned between \$5,489 and \$6,051.

Performance

- The District accomplished most of its goals, which were based on individual performance.
- Students showed measurable growth in core areas where needs had been identified.
- Teachers attended at least 18 hours of district-provided professional development and made at least 20 positive contacts with parents.

Menu

- Monies were used solely to increase eligible employee compensation.