

Classroom Dollars and Proposition 301 Results

Graham County Special Services

Graham County

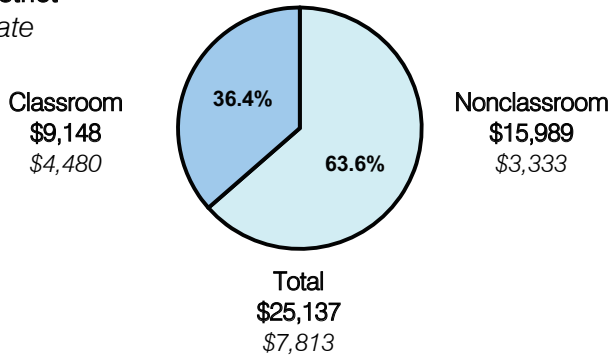
District size: Very Small
 Students attending: 50
 Number of schools: 1
 Number of certified teachers: 8

Classroom Dollars

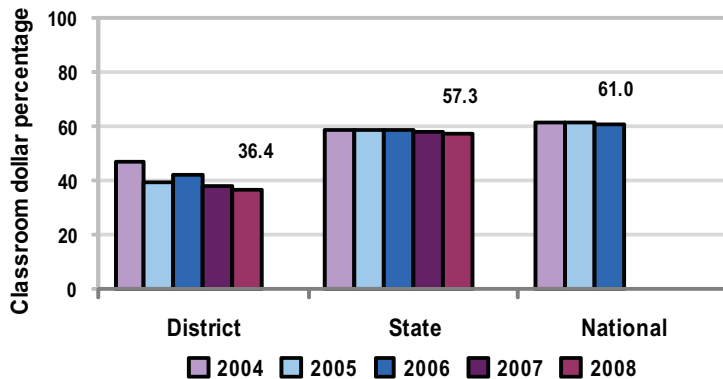
Fiscal year 2008 averages per pupil

District

State



5-year comparison



Expenditures by function

	District					State 2008	National 2006
	2004	2005	2006	2007	2008		
Classroom dollars	46.7	39.2	41.8	38.2	36.4	57.3	61.0
Nonclassroom dollars:							
Administration	6.1	6.7	6.8	10.6	13.4	9.2	10.8
Plant operations	3.0	8.0	8.9	8.8	7.5	11.3	9.9
Food service						4.8	3.8
Transportation	7.0	6.5	6.4	6.7	7.7	4.4	4.2
Student support	34.1	36.1	36.0	35.7	34.9	7.4	5.2
Instruction support			0.1		0.1	5.4	4.9
Other	3.1	3.5				0.2	0.2

Comparative Information

	District			State 2008
	2006	2007	2008	
Student/teacher ratio	5.0	5.5	5.9	17.3
Average teacher salary	\$36,133	\$37,060	\$37,567	\$44,967
Average years' experience	7.9	9.5	10.0	8.1

Classroom dollar ranking: 221 of 230 districts.

Proposition 301

District-reported 2008 results

Teacher pay

- On average, each teacher earned an additional \$4,007 in salary.

Performance

- The District accomplished its goals, which were the same as the prior fiscal year's goals and were based on school performance.
- Teachers participated in professional development activities focused on meeting the needs of individual students.

Menu

- Monies were used solely to increase teacher compensation. The District indicated that the increases helped recruit and retain teachers.