

# Grand Canyon Unified School District

Coconino County  
Operational peer group: F  
Legislative districts: 1, 2

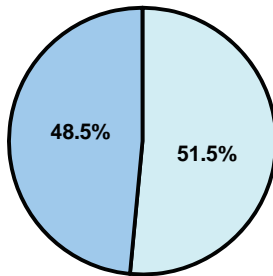
District size: Small  
Students attending: 280  
Number of schools: 2

## OPERATIONAL EFFICIENCY

### Average per-pupil spending

District  
State

**Classroom**  
\$6,188  
\$4,497



**Nonclassroom**  
\$6,581  
\$3,411

**Total**  
\$12,769  
\$7,908

### 5-year trend

Student enrollment decreased by 12 percent, which contributed to the 52 percent increase in total spending per pupil. Spending in the classroom was very inconsistent year to year and decreased significantly overall from 51.1 to 48.5 percent. Spending on administration and plant operations increased significantly, while spending in other nonclassroom areas varied year to year.

### District's cost measures relative to peer group

Operational Area	Measure	District	Peer Average	State Average
Administration	Cost per pupil	\$2,297	\$1,524	\$729
	Students per administrator	47	42	66
Plant Operations	Cost per square foot	\$9.95	\$5.78	\$6.40
	Square footage per student	275	284	144
Food Service	Cost per meal equivalent	\$2.99	\$3.38	\$2.53
Transportation	Cost per mile	\$1.74	\$2.60	\$3.36
	Miles per rider	NR	294	271

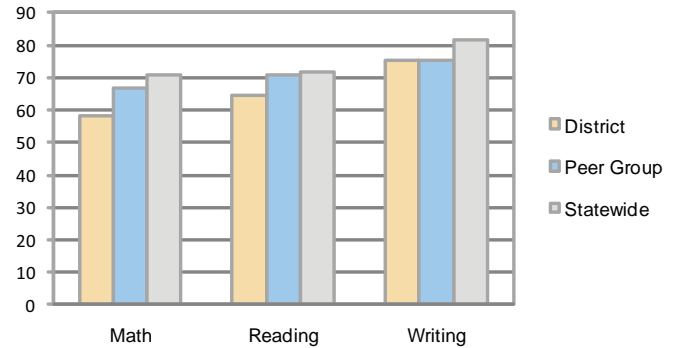
Very Low Low Comparable High Very High

### Per-pupil spending by function

	District		Peer	State	National
	2008	2009	2009	2009	2007
<b>Total</b>	<b>\$12,612</b>	<b>\$12,769</b>	<b>\$10,596</b>	<b>\$7,908</b>	<b>\$9,683</b>
<b>Classroom dollars</b>	<b>\$5,786</b>	<b>\$6,188</b>	<b>\$5,393</b>	<b>\$4,497</b>	<b>\$5,903</b>
<b>Nonclassroom dollars:</b>	<b>\$6,826</b>	<b>\$6,581</b>	<b>\$5,203</b>	<b>\$3,411</b>	<b>\$3,780</b>
Administration	2,316	2,297	1,524	729	1,050
Plant Operations	2,670	2,732	1,549	920	951
Food Service	286	305	496	382	369
Transportation	534	503	552	343	406
Student Support	644	568	593	594	512
Instruction Support	376	176	481	431	470
Other	0	0	8	12	22

## STUDENT ACHIEVEMENT AND TEACHER INFORMATION

### Percentage of students meeting state standards (AIMS)



### Adequate Yearly Progress (AYP) toward federal goals

2 schools met all applicable AYP objectives for NCLB.

### Student and teacher information

Measure	District	Peer average	State average
Attendance rate	95%	95%	95%
Graduation rate (2008)	88%	79%	75%
Poverty rate	10%	14%	19%
Student/teacher ratio	9.6	14.7	17.1
Average teacher salary	\$38,853	\$43,600	\$45,209
Average years' experience	10.1	10.7	8.3
Percent of teachers in first 3 years	10%	23%	16%

### Proposition 301

#### Teacher pay

On average, each teacher earned an additional \$2,903 in salary, and the librarian earned \$936.

#### Performance pay plan goals and results

Type of goal	Goal met?
Student achievement	■
Dropout/ graduation rates	
Student attendance	
Parent/student satisfaction	
Teacher attendance	■
Teacher professional development	■
Teacher evaluations	
Tutoring	
Other	

■ = yes, □ = no, and ▴ = partially