

# Classroom Dollars and Proposition 301 Results

## Hackberry Elementary School District

Mohave County

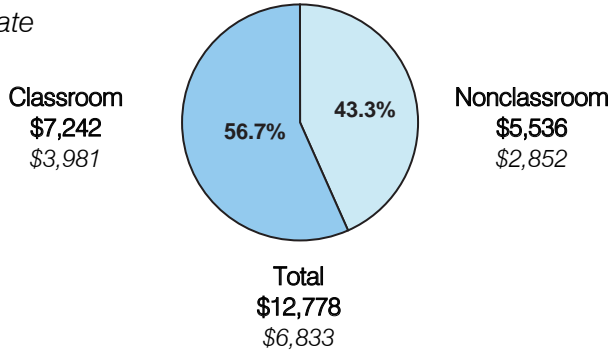
District size: Very Small  
 Students attending: 59  
 Number of schools: 1  
 Number of certified teachers: 5

### Classroom Dollars

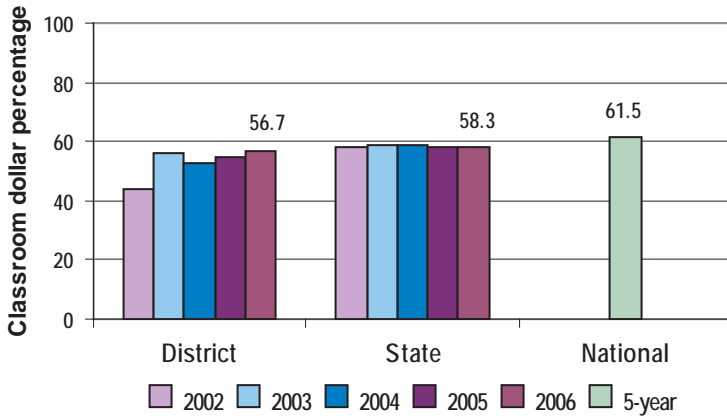
Fiscal year 2006 averages per pupil

District

State



5-year comparison



Expenditures by function

	District					State 2006	National 5-year
	2002	2003	2004	2005	2006		
Classroom dollars	43.9	55.9	52.5	55.0	56.7	58.3	61.5
Nonclassroom dollars:							
Administration	34.0	25.5	24.7	23.3	17.2	9.4	11.0
Plant operations	10.4	8.3	10.9	8.7	12.8	11.2	9.6
Food service	3.6	2.7	2.6	5.1	6.5	4.7	3.9
Transportation	4.7	5.1	6.3	5.5	5.1	4.2	4.0
Student support	3.3	0.1	1.6	0.4	0.4	7.2	5.1
Instruction support	0.1	2.4	1.4	1.9	1.3	4.8	4.7
Other				0.1		0.2	0.2

### Comparative Information

	District			State
	2004	2005	2006	2006
Student/teacher ratio	13.2	11.3	11.8	17.7
Average teacher salary	\$33,631	\$32,155	\$35,267	\$42,967
Average years' experience	3.2	3.5	4.6	8.3

Classroom dollar ranking: 92 of 229 districts.

### Proposition 301

#### District-reported 2006 results

##### Teacher pay

- On average, each teacher earned an additional \$2,663 in salary.

##### Performance

- The District accomplished most of its goals, which were based on district and individual performance.
- Students showed at least 1 year's growth in standardized test scores.
- The District used the standardized test scores to help identify areas of strengths and weaknesses within its curriculum.
- Teachers had 100 percent attendance, with the exception of the 3 allowable personal days.
- Teachers established and completed professional development goals.
- Other goals were linked to parent-student satisfaction.

##### Menu

- Monies were used to increase teacher compensation and for professional development activities.