

Hackberry Elementary School District

Mohave County

Peer groups: Efficiency 12, Achievement 4

Legislative district(s): 2 and 3

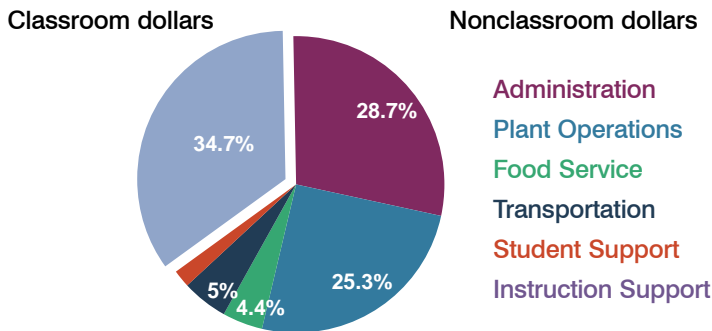
District size: Very Small

Students attending: 31

Number of schools: 1

OPERATIONAL EFFICIENCY

Spending by function

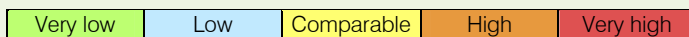


5-year trend

Total spending per pupil doubled, which is only partially explained by the 31 percent decline in student enrollment. Spending in the classroom was inconsistent year to year, decreasing significantly overall from 55 to 34.7 percent. Spending on administration and plant operations increased significantly, while spending in other nonclassroom areas varied year to year.

District's cost measures relative to peer group

Operational Area	Measure	District	Peer Average	State Average
Administration	Cost per pupil	\$7,743	\$2,444	\$721
	Students per administrator	8	32	66
Plant Operations	Cost per square foot	\$12.25	\$7.59	\$6.25
	Square footage per student	557	297	146
Food Service	Cost per meal equivalent	\$6.06	\$4.85	\$2.41
Transportation	Cost per mile	\$2.35	\$1.87	\$3.35
	Miles per rider	599	611	282

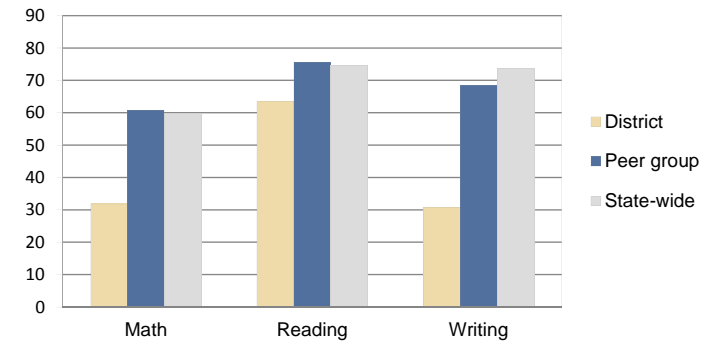


Per-pupil spending by function

	District		Peer 2010	State 2010	National 2008
	2009	2010			
Total	\$21,911	\$26,964	\$15,187	\$7,609	\$10,297
Classroom dollars	\$8,968	\$9,345	\$8,084	\$4,253	\$6,262
Nonclassroom dollars:	\$12,943	\$17,619	\$7,103	\$3,356	\$4,035
Administration	5,533	7,743	2,444	721	1,109
Plant Operations	2,856	6,831	2,188	914	1,003
Food Service	1,065	1,181	751	366	390
Transportation	993	1,354	924	342	438
Student Support	340	510	473	581	556
Instruction Support	2,156	0	323	432	539

STUDENT ACHIEVEMENT AND TEACHER INFORMATION

Percentage of students meeting state standards (AIMS)



Adequate Yearly Progress (AYP) toward federal goals

The District's school met all applicable AYP objectives for NCLB.

Student and teacher information

Measure	District	Peer Average	State Average
Attendance rate	97%	95%	94%
Graduation rate (2009)	N/A	N/A	76%
Poverty rate (2009)	20%	20%	21%
Student/teacher ratio	7.8	12.9	17.9
Average teacher salary	\$32,030	\$45,161	\$47,077
Average years' experience	3.5	13.5	10.6
Percent of teachers in first 3 years	50%	8%	20%

Proposition 301

Teacher and other staff pay

The District did not pay out fiscal year 2010 Proposition 301 monies until fiscal year 2011.

Performance pay plan goals and results

Type of goal	Goal met?
Student achievement	■
Dropout/graduation rates	-
Student attendance	-
Parent/student satisfaction	-
Teacher attendance	-
Teacher professional development	■
Teacher evaluations	-
Tutoring	-
Other	■

■ = yes, □ = no, ▴ = partially, and - = no goal set