

Hackberry Elementary School District

Mohave County
Operational peer group: L
Legislative districts: 2, 3

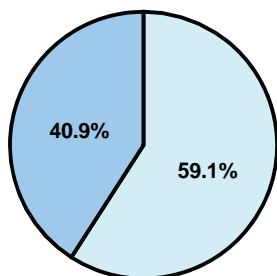
District size: Very Small
Students attending: 43
Number of schools: 1

OPERATIONAL EFFICIENCY

Average per-pupil spending

District
State

Classroom
\$8,968
\$4,497



Nonclassroom
\$12,943
\$3,411

Total
\$21,911
\$7,908

5-year trend

Total spending per pupil doubled, which is only partially explained by the 19 percent decline in student enrollment. Spending in the classroom was very inconsistent year to year and decreased significantly overall from 52.5 to 40.9 percent. Spending on plant operations, food service, and instruction support increased, while spending in other nonclassroom areas varied year to year.

District's cost measures relative to peer group

Operational Area	Measure	District	Peer Average	State Average
Administration	Cost per pupil	\$5,533	\$2,656	\$729
	Students per administrator	17	32	66
Plant Operations	Cost per square foot	\$7.02	\$7.53	\$6.40
	Square footage per student	407	318	144
Food Service	Cost per meal equivalent	\$5.33	\$5.10	\$2.53
Transportation	Cost per mile	\$1.49	\$1.79	\$3.36
	Miles per rider	664	710	271

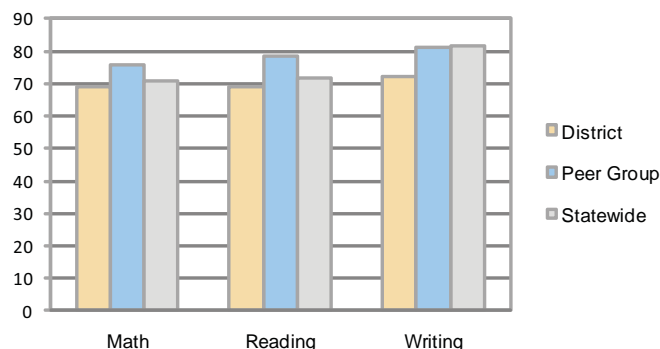
Very Low Low Comparable High Very High

Per-pupil spending by function

	District		Peer	State	National
	2008	2009	2009	2009	2007
Total	\$13,924	\$21,911	\$16,311	\$7,908	\$9,683
Classroom dollars	\$5,736	\$8,968	\$8,757	\$4,497	\$5,903
Nonclassroom dollars:	\$8,188	\$12,943	\$7,554	\$3,411	\$3,780
Administration	2,856	5,533	2,656	729	1,050
Plant Operations	1,864	2,856	2,297	920	951
Food Service	939	1,065	859	382	369
Transportation	736	993	930	343	406
Student Support	210	340	474	594	512
Instruction Support	1,583	2,156	338	431	470
Other	0	0	0	12	22

STUDENT ACHIEVEMENT AND TEACHER INFORMATION

Percentage of students meeting state standards (AIMS)



Adequate Yearly Progress (AYP) toward federal goals

The District's school met all applicable AYP objectives for NCLB.

Student and teacher information

Measure	District	Peer average	State average
Attendance rate	96%	95%	95%
Graduation rate (2008)	N/A	55%	75%
Poverty rate	19%	12%	19%
Student/teacher ratio	7.1	10.7	17.1
Average teacher salary	\$41,922	\$45,399	\$45,209
Average years' experience	11.2	10.9	8.3
Percent of teachers in first 3 years	17%	18%	16%

Proposition 301

Teacher pay

On average, each teacher earned \$6,054 in additional salary.

Performance pay plan goals and results

Type of goal	Goal met?
Student achievement	▲
Dropout/ graduation rates	■
Student attendance	■
Parent/student satisfaction	■
Teacher attendance	▲
Teacher professional development	▲
Teacher evaluations	■
Tutoring	■
Other	■

■ = yes, □ = no, and ▲ = partially