

Classroom Dollars and Proposition 301 Results

Hackberry Elementary School District

Mohave County

District size: Very Small
 Students attending: 64
 Number of schools: 1
 Number of certified teachers: 6

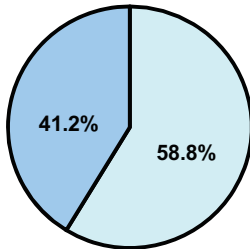
Classroom Dollars

Fiscal year 2008 averages per pupil

District

State

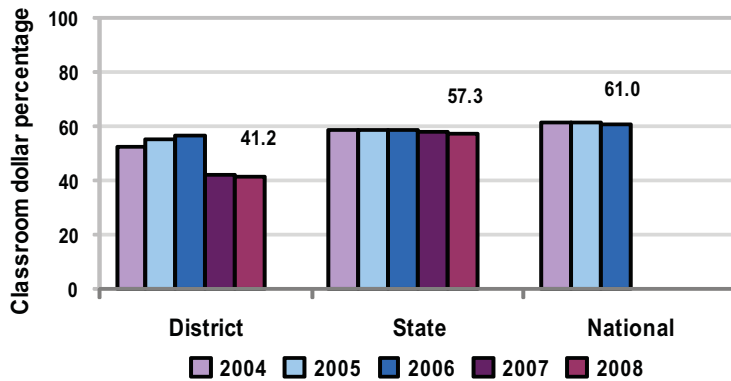
Classroom
 \$5,736
 \$4,480



Nonclassroom
 \$8,188
 \$3,333

Total
 \$13,924
 \$7,813

5-year comparison



Expenditures by function

| | District | | | | | State 2008 | National 2006 |
|-----------------------|----------|------|------|------|------|---------------|------------------|
| | 2004 | 2005 | 2006 | 2007 | 2008 | | |
| Classroom dollars | 52.5 | 55.0 | 56.7 | 41.9 | 41.2 | 57.3 | 61.0 |
| Nonclassroom dollars: | | | | | | | |
| Administration | 24.7 | 23.3 | 17.2 | 20.3 | 20.5 | 9.2 | 10.8 |
| Plant operations | 10.9 | 8.7 | 12.8 | 15.0 | 13.4 | 11.3 | 9.9 |
| Food service | 2.6 | 5.1 | 6.5 | 6.1 | 6.7 | 4.8 | 3.8 |
| Transportation | 6.3 | 5.5 | 5.1 | 4.7 | 5.3 | 4.4 | 4.2 |
| Student support | 1.6 | 0.4 | 0.4 | 1.6 | 1.5 | 7.4 | 5.2 |
| Instruction support | 1.4 | 1.9 | 1.3 | 10.4 | 11.4 | 5.4 | 4.9 |
| Other | | 0.1 | | | | 0.2 | 0.2 |

Comparative Information

| | District | | | State 2008 |
|---------------------------|----------|----------|----------|---------------|
| | 2006 | 2007 | 2008 | |
| Student/teacher ratio | 11.8 | 9.0 | 9.1 | 17.3 |
| Average teacher salary | \$35,267 | \$43,647 | \$39,410 | \$44,967 |
| Average years' experience | 4.6 | 5.8 | 8.2 | 8.1 |

Classroom dollar ranking: 211 of 230 districts.

Proposition 301

District-reported 2008 results

Teacher pay

- On average, each teacher earned \$4,757 in additional salary.

Performance

- The District accomplished some of its goals, which were based on individual and school performance.
- Students showed 25 percent growth in reading, writing, and math as measured by quarterly district assessments.
- Teachers had to communicate with the parents of at least 2 students each week, and document this communication for administrative review.
- Teachers participated in various evaluation activities designed to improve classroom management and instruction.
- Other goals were linked to parent and community involvement and teachers' weekly lesson plans.

Menu

- Menu monies were used solely to increase teacher compensation.