

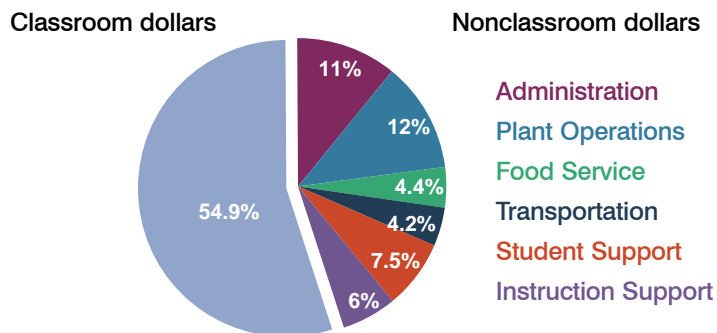
Higley Unified School District

Maricopa County
Peer groups: Efficiency 2, Achievement 16
Legislative district(s): 21 and 22

District size: Large
Students attending: 9,262
Number of schools: 10

OPERATIONAL EFFICIENCY

Spending by function



5-year trend

Total spending per pupil increased by 16 percent. Spending in the classroom varied year to year, decreasing significantly overall from 65.4 to 54.9 percent. Spending on plant operations and student and instruction support increased significantly, while spending in other nonclassroom areas remained fairly stable.

District's cost measures relative to peer group

Operational Area	Measure	District	Peer Average	State Average
Administration	Cost per pupil	\$696	\$627	\$721
	Students per administrator	88	68	66
Plant Operations	Cost per square foot	\$5.66	\$6.54	\$6.25
	Square footage per student	135	142	146
Food Service	Cost per meal equivalent	\$2.51	\$2.52	\$2.41
Transportation	Cost per mile	\$4.39	\$3.31	\$3.35
	Miles per rider	251	323	282

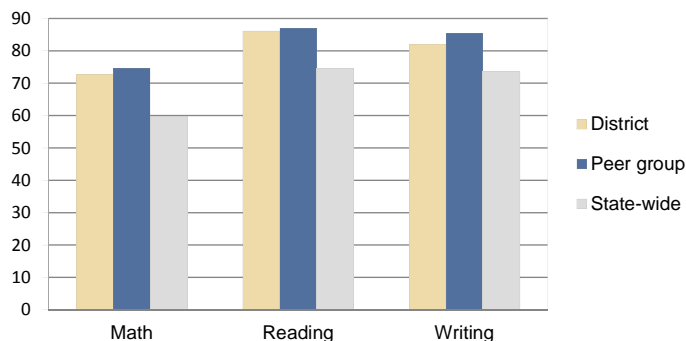
Very low Low Comparable High Very high

Per-pupil spending by function

	District		Peer 2010	State 2010	National 2008
	2009	2010			
Total	\$6,504	\$6,350	\$7,166	\$7,609	\$10,297
Classroom dollars	\$3,579	\$3,487	\$4,025	\$4,253	\$6,262
Nonclassroom dollars:	\$2,925	\$2,863	\$3,141	\$3,356	\$4,035
Administration	678	696	627	721	1,109
Plant Operations	802	763	917	914	1,003
Food Service	272	277	308	366	390
Transportation	331	265	326	342	438
Student Support	520	477	539	581	556
Instruction Support	322	385	424	432	539

STUDENT ACHIEVEMENT AND TEACHER INFORMATION

Percentage of students meeting state standards (AIMS)



Adequate Yearly Progress (AYP) toward federal goals

10 schools met all applicable AYP objectives for NCLB.

Student and teacher information

Measure	District	Peer Average	State Average
Attendance rate	95%	95%	94%
Graduation rate (2009)	86%	90%	76%
Poverty rate (2009)	9%	10%	21%
Student/teacher ratio	18.7	18.0	17.9
Average teacher salary	\$41,568	\$45,075	\$47,077
Average years' experience	6.5	10.4	10.6
Percent of teachers in first 3 years	29%	16%	20%

Proposition 301

Teacher and other staff pay

On average, each teacher earned \$5,298 in additional pay, and each librarian, speech pathologist, and counselor earned between \$3,210 and \$5,323.

Performance pay plan goals and results

Type of goal	Goal met?
Student achievement	■
Dropout/graduation rates	-
Student attendance	-
Parent/student satisfaction	-
Teacher attendance	-
Teacher professional development	▲
Teacher evaluations	-
Tutoring	-
Other	▲

■ = yes, □ = no, ▲ = partially, and - = no goal set