

Higley Unified School District

Maricopa County
Operational peer group: B
Legislative districts: 21, 22

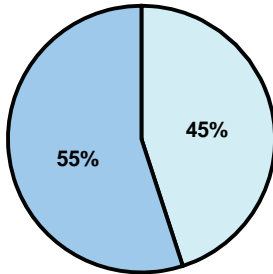
District size: Large
Students attending: 9,161
Number of schools: 9

OPERATIONAL EFFICIENCY

Average per-pupil spending

District
State

Classroom
\$3,579
\$4,497



Nonclassroom
\$2,925
\$3,411

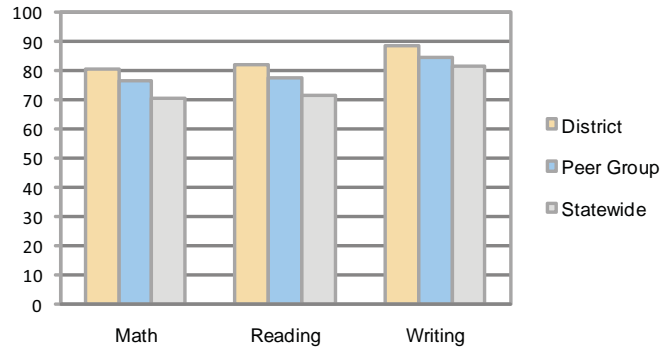
Total
\$6,504
\$7,908

5-year trend

Total spending per pupil increased by 41 percent. Spending in the classroom was very inconsistent year to year and decreased significantly overall from 59.9 to 55 percent. Spending on student and instruction support increased significantly, while spending in other nonclassroom areas varied year to year.

STUDENT ACHIEVEMENT AND TEACHER INFORMATION

Percentage of students meeting state standards (AIMS)



Adequate Yearly Progress (AYP) toward federal goals

9 schools met all applicable AYP objectives for NCLB.

Student and teacher information

Measure	District	Peer average	State average
Attendance rate	97%	96%	95%
Graduation rate (2008)	82%	85%	75%
Poverty rate	9%	13%	19%
Student/teacher ratio	18.9	17.3	17.1
Average teacher salary	\$40,526	\$45,833	\$45,209
Average years' experience	5.8	9.1	8.3
Percent of teachers in first 3 years	36%	27%	16%

District's cost measures relative to peer group

Operational Area	Measure	District	Peer Average	State Average
Administration	Cost per pupil	\$678	\$634	\$729
	Students per administrator	89	67	66
Plant Operations	Cost per square foot	\$5.89	\$6.67	\$6.40
	Square footage per student	136	142	144
Food Service	Cost per meal equivalent	\$2.84	\$2.64	\$2.53
Transportation	Cost per mile	\$5.07	\$3.44	\$3.36
	Miles per rider	121	290	271

Very Low Low Comparable High Very High

Per-pupil spending by function

	District		Peer	State	National
	2008	2009	2009	2009	2007
Total	\$6,480	\$6,504	\$7,523	\$7,908	\$9,683
Classroom dollars	\$3,692	\$3,579	\$4,247	\$4,497	\$5,903
Nonclassroom dollars:	\$2,788	\$2,925	\$3,276	\$3,411	\$3,780
Administration	696	678	634	729	1,050
Plant Operations	752	802	936	920	951
Food Service	251	272	310	382	369
Transportation	333	331	359	343	406
Student Support	474	520	571	594	512
Instruction Support	274	313	443	431	470
Other	8	9	23	12	22

Proposition 301

Teacher pay

On average, each teacher earned \$5,384 in additional salary, and each librarian, speech pathologist, counselor, and teacher on assignment earned between \$1,477 and \$5,377.

Performance pay plan goals and results

Type of goal	Goal met?
Student achievement	■
Dropout/ graduation rates	
Student attendance	
Parent/student satisfaction	
Teacher attendance	
Teacher professional development	■
Teacher evaluations	
Tutoring	
Other	■

■ = yes, □ = no, and ▴ = partially