

Classroom Dollars and Proposition 301 Results

Hillside Elementary School District

Yavapai County

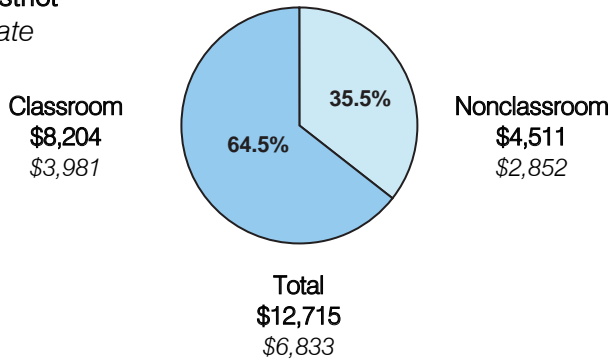
District size: Very Small
 Students attending: 16
 Number of schools: 1
 Number of certified teachers: 1

Classroom Dollars

Fiscal year 2006 averages per pupil

District

State

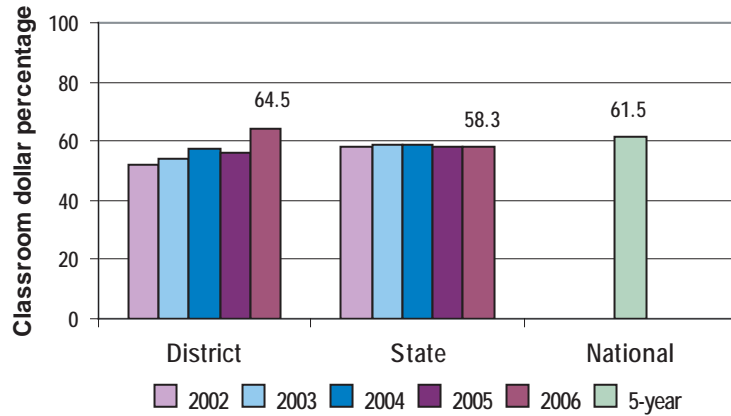


Comparative Information

	District			State
	2004	2005	2006	2006
Student/teacher ratio	14.0	12.0	16.0	17.7
Average teacher salary	n/a	n/a	n/a	\$42,967
Average years' experience	15.0	4.0	6.0	8.3

Classroom dollar ranking: 6 of 229 districts.

5-year comparison



Expenditures by function

	District					State	National
	2002	2003	2004	2005	2006	2006	5-year
Classroom dollars	52.1	53.8	57.5	56.0	64.5	58.3	61.5
Nonclassroom dollars:							
Administration	18.1	14.2	11.6	12.5	8.0	9.4	11.0
Plant operations	15.5	12.8	12.4	13.4	10.6	11.2	9.6
Food service						4.7	3.9
Transportation	13.4	15.6	15.2	13.2	11.3	4.2	4.0
Student support	0.1	3.0	3.3	4.7	5.3	7.2	5.1
Instruction support	0.4	0.6		0.2	0.3	4.8	4.7
Other	0.4					0.2	0.2

Proposition 301

District-reported 2006 results

Teacher pay

- The teacher earned \$4,435 in additional salary, and each instructional aide earned an additional \$807.

Performance

- The District accomplished its goals, which were the same as the prior fiscal year's goals and were based on district and individual performance.
- Students demonstrated 1 year's academic progress.
- The teacher participated in professional development activities.

Menu

- Monies were used solely to increase eligible employee compensation.