

Hillside Elementary School District

Yavapai County
Operational peer group: L
Legislative districts: 4

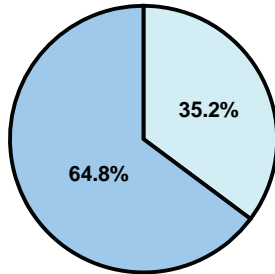
District size: Very Small
Students attending: 25
Number of schools: 1

OPERATIONAL EFFICIENCY

Average per-pupil spending

District
State

Classroom
\$8,764
\$4,497



Nonclassroom
\$4,752
\$3,411

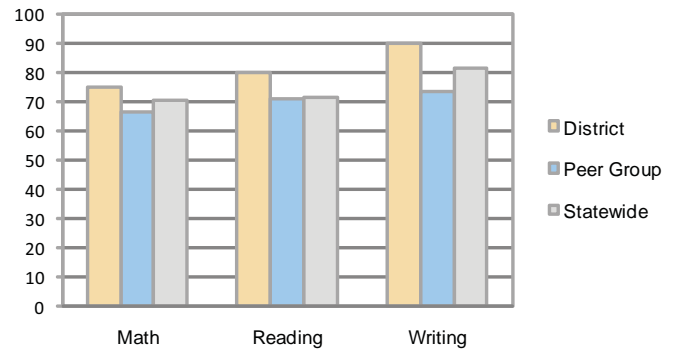
Total
\$13,516
\$7,908

5-year trend

Student enrollment increased by 79 percent, which contributed to the 11 percent decrease in total spending per pupil. Spending in the classroom was very inconsistent year to year and increased significantly overall from 57.5 to 64.8 percent. Spending on transportation decreased significantly, while other nonclassroom areas varied year to year.

STUDENT ACHIEVEMENT AND TEACHER INFORMATION

Percentage of students meeting state standards (AIMS)



Adequate Yearly Progress (AYP) toward federal goals

The District's school met all applicable AYP objectives for NCLB.

District's cost measures relative to peer group

Operational Area	Measure	District	Peer Average	State Average
Administration	Cost per pupil	\$1,793	\$2,656	\$729
	Students per administrator	N/A	32	66
Plant Operations	Cost per square foot	\$7.81	\$7.53	\$6.40
	Square footage per student	288	318	144
Food Service	Cost per meal equivalent	N/A	\$5.10	\$2.53
Transportation	Cost per mile	N/A	\$1.79	\$3.36
	Miles per rider	N/A	710	271

Very Low Low Comparable High Very High

Student and teacher information

Measure	District	Peer average	State average
Attendance rate	95%	94%	95%
Graduation rate (2008)	N/A	54%	75%
Poverty rate	25%	31%	19%
Student/teacher ratio	12.6	10.8	17.1
Average teacher salary	N/A	\$45,165	\$45,209
Average years' experience	18.0	12.7	8.3
Percent of teachers in first 3 years	0%	15%	16%

Proposition 301

Teacher pay

On average, each teacher earned \$4,526 in additional salary, and each instructional aide earned an additional \$1,243.

Performance pay plan goals and results

Type of goal	Goal met?
Student achievement	■
Dropout/ graduation rates	
Student attendance	
Parent/student satisfaction	■
Teacher attendance	
Teacher professional development	
Teacher evaluations	■
Tutoring	
Other	

■ = yes, □ = no, and ▮ = partially

Per-pupil spending by function

	District		Peer 2009	State 2009	National 2007
	2008	2009			
Total	\$10,270	\$13,516	\$16,311	\$7,908	\$9,683
Classroom dollars	\$6,975	\$8,764	\$8,757	\$4,497	\$5,903
Nonclassroom dollars:	\$3,295	\$4,752	\$7,554	\$3,411	\$3,780
Administration	1,122	1,793	2,656	729	1,050
Plant Operations	1,513	2,249	2,297	920	951
Food Service	4	0	859	382	369
Transportation	498	469	930	343	406
Student Support	124	153	474	594	512
Instruction Support	34	88	338	431	470
Other	0	0	0	12	22