

# Classroom Dollars and Proposition 301 Results

## Hillside Elementary School District

Yavapai County

District size: Very Small  
 Students attending: 28  
 Number of schools: 1  
 Number of certified teachers: 2

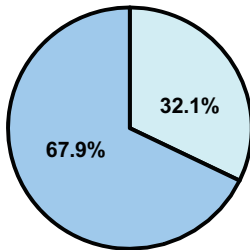
### Classroom Dollars

Fiscal year 2008 averages per pupil

District

State

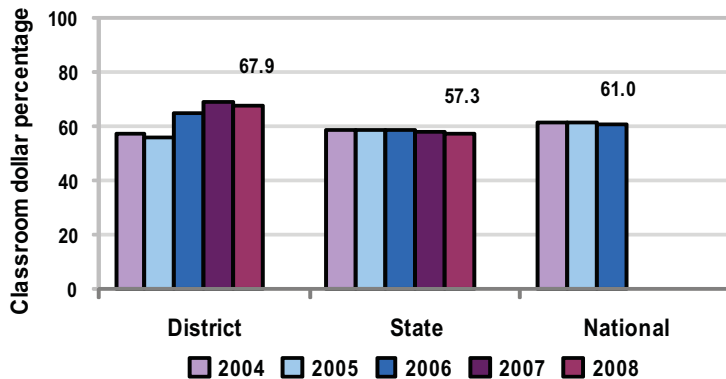
Classroom  
 \$6,975  
 \$4,480



Nonclassroom  
 \$3,295  
 \$3,333

Total  
 \$10,270  
 \$7,813

5-year comparison



### Expenditures by function

	District					State 2008	National 2006
	2004	2005	2006	2007	2008		
Classroom dollars	57.5	56.0	64.5	68.9	67.9	57.3	61.0
Nonclassroom dollars:							
Administration	11.6	12.5	8.0	6.1	10.9	9.2	10.8
Plant operations	12.4	13.4	10.6	12.9	14.7	11.3	9.9
Food service						4.8	3.8
Transportation	15.2	13.2	11.3	10.2	5.0	4.4	4.2
Student support	3.3	4.7	5.3	1.6	1.2	7.4	5.2
Instruction support		0.2	0.3	0.3	0.3	5.4	4.9
Other						0.2	0.2

### Comparative Information

	District			State 2008
	2006	2007	2008	
Student/teacher ratio	16.0	14.0	13.8	17.3
Average teacher salary	n/a	\$37,367	\$39,215	\$44,967
Average years' experience	6.0	15.0	10.5	8.1

Classroom dollar ranking: 4 of 230 districts.

### Proposition 301

#### District-reported 2008 results

##### Teacher pay

- On average, each teacher earned \$4,379 in additional salary, and each instructional aide earned \$1,113.

##### Performance

- The District accomplished its goals, which were similar to the prior fiscal year's goals and were based on district performance.
- Students demonstrated 1 year's academic progress on standardized tests.
- The District met Adequate Yearly Progress objectives.
- Special needs students met Individual Education Plan goals.

##### Menu

- Eligible employees were compensated for completing a professional development class.