

Holbrook Unified School District

Navajo County

Efficiency peer groups 5 and T-10, Achievement peer group 6¹

Legislative district(s): 6 and 7

District size, location:

Medium, Rural

Students attending:

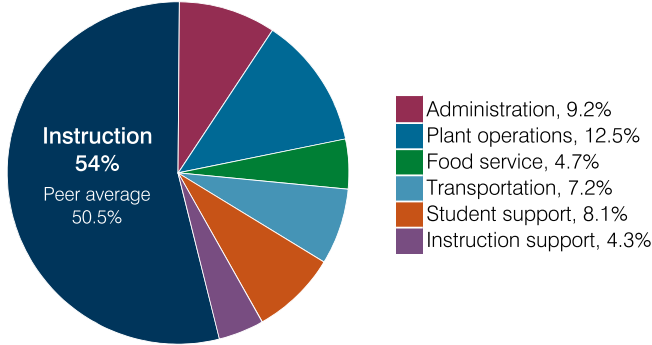
1,912

Number of schools:

5

OPERATIONAL EFFICIENCY

Spending by operational area



Efficiency measures relative to peer averages

Operational area	Measure	District	Peer average	State average
Administration	Cost per pupil	\$1,028	\$1,221	\$860
	Students per administrative position	56	54	66
Plant operations	Cost per square foot	\$6.54	\$5.43	\$6.34
	Square footage per student	213	257	156
Food service	Cost per meal	\$3.18	\$3.66	\$3.02
Transportation	Cost per mile	\$1.56	\$1.95	\$4.05
	Cost per rider	\$1,559	\$1,572	\$1,301

Very low Low Comparable High Very high

Per pupil spending

Spending by area	District		Peer average 2018	State average 2018
	2017	2018		
Instruction	\$ 5,870	\$ 6,026	\$ 4,824	\$ 4,480
Administration	915	1,028	1,221	860
Plant operations	1,347	1,394	1,365	988
Food service	505	525	437	425
Transportation	775	802	532	388
Student support	970	898	623	693
Instruction support	531	480	359	462
Total operational	10,913	11,153	9,361	8,296
Land and buildings	349	249	799	827
Equipment	604	646	433	409
Interest	71	66	248	228
Other	6	32	71	169
Total nonoperational	1,030	993	1,551	1,633
Total per pupil spending	\$ 11,943	\$ 12,146	\$ 10,912	\$ 9,929

¹ See Appendix A for information such as districts included in each peer group and Appendix B for sources and methodology.

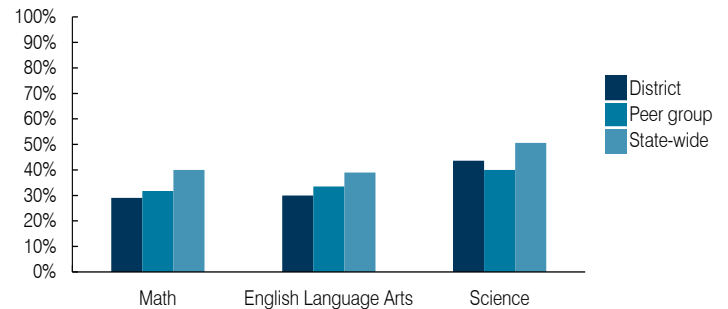
STUDENT ACHIEVEMENT, STUDENT AND TEACHER MEASURES, AND REVENUES

ADE-assigned school letter grades

Grade	Number of schools ²	Percentage of schools
A	0	0%
B	0	0%
C	4	100%
D	0	0%
F	0	0%

² Excludes schools for which letter grades were not published by ADE. See Appendix B for more information.

Students who passed State assessments



Student and teacher measures

Measure	District	Peer average	State average
Attendance rate	94%	93%	94%
Graduation rate (2017)	82%	85%	78%
Poverty rate (2017)	30%	29%	19%
Special education population	11%	14%	12%
Students per teacher	13.4	16.2	18.4
Average teacher salary	\$48,503	\$46,264	\$48,951
Amount from Prop 301	\$5,487	\$6,122	\$6,411
Average years of teacher experience	14.1	12.2	11.4
Percentage of teachers in first 3 years	15%	20%	19%

Per pupil revenues

Revenues by source	District		Peer average 2018	State average 2018
	2017	2018		
Federal	\$ 3,977	\$ 4,200	\$ 3,917	\$ 1,317
State	5,539	6,109	4,283	4,011
Local	2,138	2,142	4,207	4,592
Total per pupil revenues	\$ 11,654	\$ 12,451	\$ 12,407	\$ 9,920

Select revenues from common sources

Source	District	Peer average	State average
Equalization formula funding	\$ 6,130	\$ 6,597	\$ 5,992
Grants	1,756	1,187	1,703
Donations and tax credits	54	50	147

Select revenues from less common sources

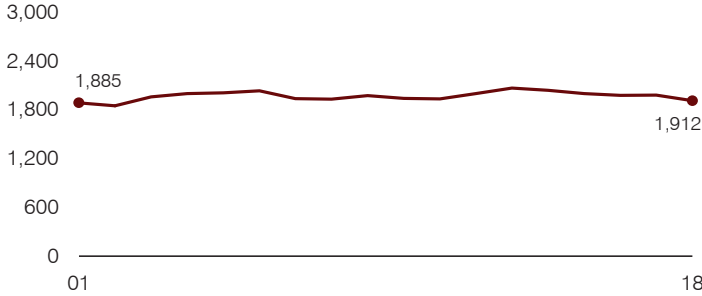
Source	District	Peer average	Number of peers receiving
Desegregation	\$ 0	\$ 0	0 of 31
Small school adjustment	0	0	0 of 31
Federal impact aid	2,268	3,094	16 of 31
Voter-approved levy increases	732	824	21 of 31

Instructional spending percentage

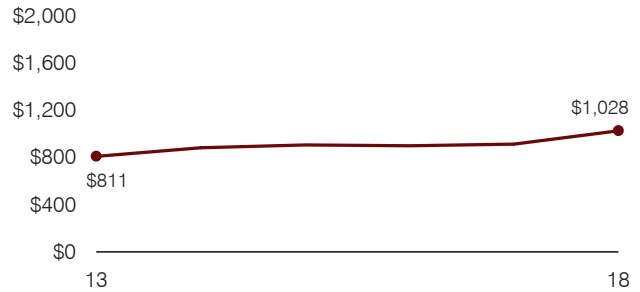
Year:	2001	2002	2003	2004	2005	2006	2007	2008	2009	2010	2011	2012	2013	2014	2015	2016	2017	2018
Percentage:	57.3	56.5	57.2	54.6	55.6	55.4	56.7	57.0	56.1	54.9	54.8	54.4	53.2	53.7	53.4	54.7	53.8	54.0

TRENDS AND FINANCIAL STRESS ASSESSMENT
Fiscal years as indicated

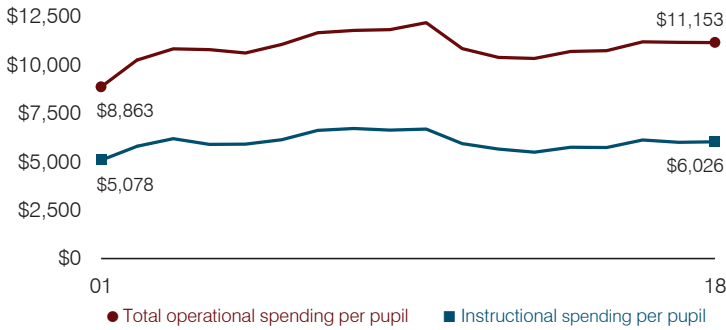
Students attending



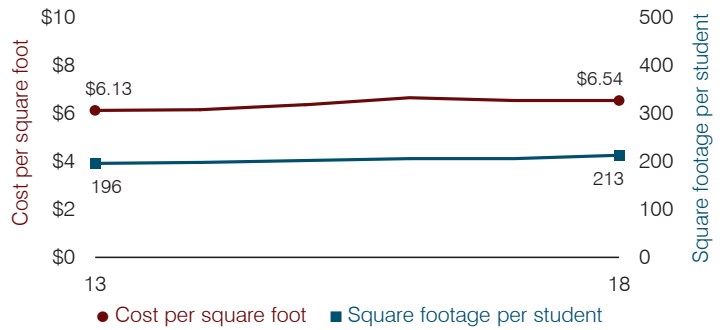
Administrative cost per pupil



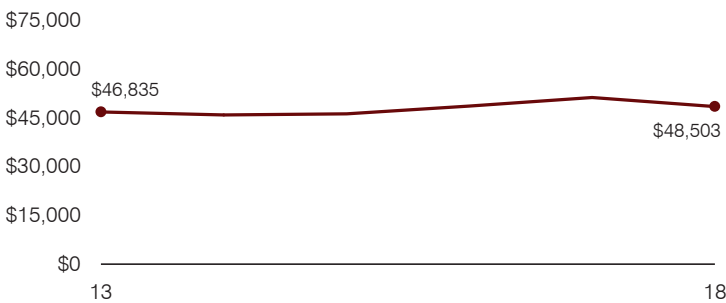
Total operational and instructional spending per pupil (inflation adjusted to 2018 dollars)



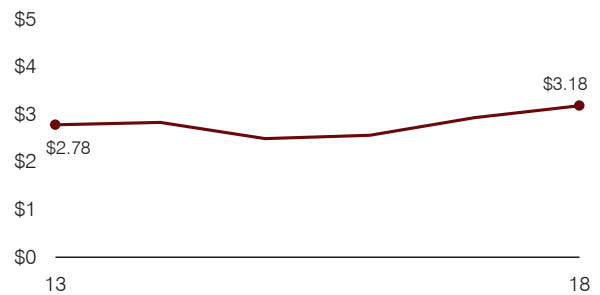
Plant cost per square foot and square footage per student



Average teacher salary



Food service cost per meal



Financial stress assessment

Overall financial stress level: Low

Measure: 2016 through 2018	Assessment
Change in number of district students	Moderate decrease
Spending exceeded operating/capital budgets	Operating and capital
Spending increase election results	Voter-approved
Operating reserve percentage, Trend	Impact Aid Fund reserve
Years of capital reserve held	More than 3 years
Current financial and internal control status	Compliant

Low
Moderate
High

Transportation costs per mile and per rider

