

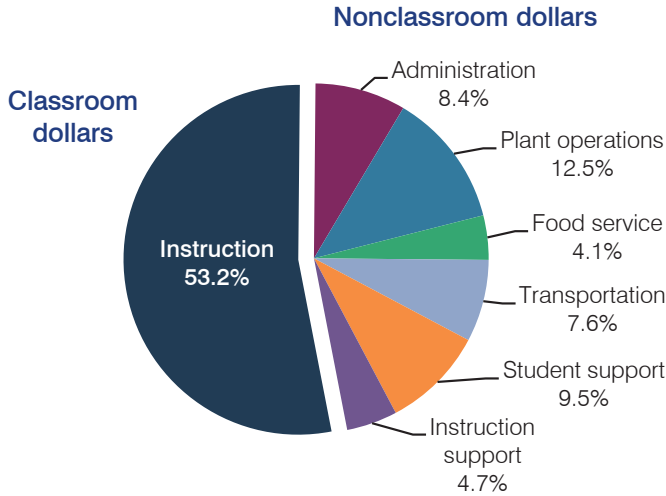
# Holbrook Unified School District

Navajo County  
 Efficiency peer groups 4 and T-10, Achievement peer group 6  
 Legislative district(s): 6 and 7

District size, location: Medium-Large, Town  
 Students attending: 2,067  
 Number of schools: 5

## OPERATIONAL EFFICIENCY

### Spending by operational area



### 5-year spending trend

Total spending per pupil decreased by 4 percent. Spending in the classroom decreased from 57 to 53.2 percent. Spending on transportation and student support increased substantially. Overall, spending on plant operations increased slightly, while spending on administration decreased. Spending on other nonclassroom areas remained fairly stable.

### Cost measures relative to peer averages

Operational area	Measure	District	Peer average	State average
Administration	Cost per pupil	\$811	\$764	\$746
	Students per administrator	60	67	67
Plant operations	Cost per square foot	\$6.13	\$5.34	\$6.03
	Square footage per student	196	176	153
Food service	Cost per meal equivalent	\$2.78	\$2.67	\$2.58
Transportation	Cost per mile	\$1.54	\$1.97	\$3.55
	Cost per rider	\$835	\$1,010	\$1,015

Very low Low Comparable High Very high

### Per pupil spending by operational area

	District		Peer average	State average	National average
	2012	2013	2013	2013	2011
<b>Total</b>	<b>\$9,528</b>	<b>\$9,634</b>	<b>\$7,187</b>	<b>\$7,496</b>	<b>\$10,658</b>
<b>Classroom dollars</b>	<b>5,185</b>	<b>5,125</b>	<b>3,779</b>	<b>4,031</b>	<b>6,520</b>
<b>Nonclassroom dollars:</b>	<b>4,343</b>	<b>4,509</b>	<b>3,408</b>	<b>3,465</b>	<b>4,138</b>
Administration	766	811	764	746	1,138
Plant operations	1,150	1,199	921	924	1,015
Food service	391	399	364	396	412
Transportation	654	727	394	369	452
Student support	923	918	561	582	593
Instruction support	459	455	404	448	528

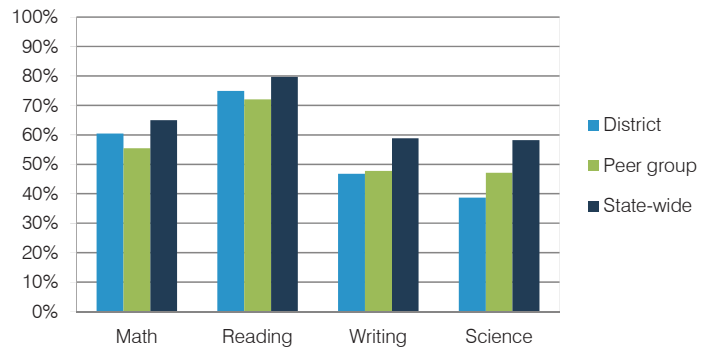
## STUDENT ACHIEVEMENT, TEACHER MEASURES, AND FINANCIAL ASSESSMENT

### ADE-reported district and school letter grades

District grade: **B**

Grade	Number of schools	Percentage of schools
A	2	40%
B	1	20%
C	2	40%
D	0	0%
F	0	0%
Not rated	0	0%

### Students who met state standards (AIMS)



### Student and teacher measures

Measure	District	Peer average	State average
Attendance rate	94%	93%	94%
Graduation rate (2012)	83%	80%	77%
Poverty rate (2012)	36%	33%	25%
Students per teacher	14.5	15.3	18.3
Average teacher salary	\$46,835	\$43,207	\$45,264
Amount from Proposition 301	\$2,894	\$3,525	\$3,784
Average years of teacher experience	11.5	11.9	10.9
Percentage of teachers in first 3 years	16%	20%	19%

### Financial stress assessment

Overall financial stress level: **Low**

Measure: 2011 through 2013

Measure	Assessment
Number of students attending district	Increase
Spending exceeded operating/capital budgets	No overspending
Spending increase election results	Voter-approved
Operating reserve percentage (max. 4%), trend	Impact Aid Fund reserve
Years of capital reserve held	More than 3 years
Current financial and internal control status	Compliant

Stress level

