

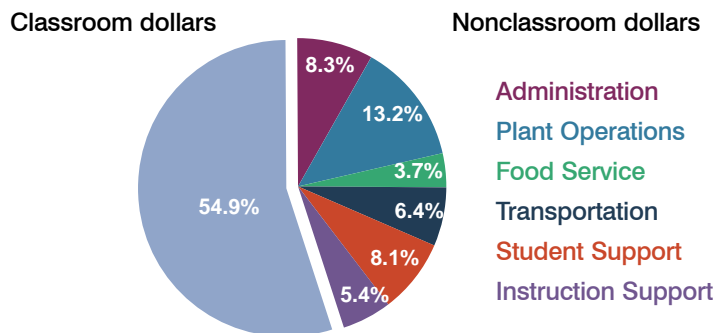
# Holbrook Unified School District

Navajo County  
Peer groups: Efficiency 5, Achievement 21  
Legislative district(s): 5

District size: Medium  
Students attending: 1,939  
Number of schools: 6

## OPERATIONAL EFFICIENCY

### Spending by function



### 5-year trend

Total spending per pupil increased by 30 percent. Spending in the classroom varied year to year, decreasing overall from 55.6 to 54.9 percent. Spending on administration decreased and spending on student support increased, while spending in other nonclassroom areas remained fairly stable.

### District's cost measures relative to peer group

Operational Area	Measure	District	Peer Average	State Average
Administration	Cost per pupil	\$886	\$1,060	\$721
	Students per administrator	54	54	66
Plant Operations	Cost per square foot	\$6.89	\$5.34	\$6.25
	Square footage per student	204	243	146
Food Service	Cost per meal equivalent	\$2.60	\$2.83	\$2.41
Transportation	Cost per mile	\$1.51	\$2.55	\$3.35
	Miles per rider	723	360	282

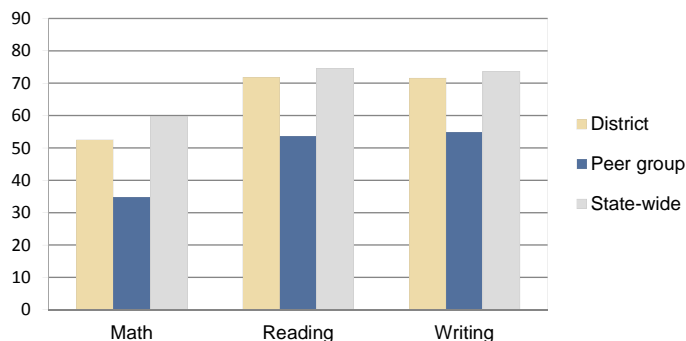
Very low Low Comparable High Very high

### Per-pupil spending by function

	District		Peer 2010	State 2010	National 2008
	2009	2010			
<b>Total</b>	<b>\$10,228</b>	<b>\$10,638</b>	<b>\$8,776</b>	<b>\$7,609</b>	<b>\$10,297</b>
<b>Classroom dollars</b>	<b>\$5,743</b>	<b>\$5,843</b>	<b>\$4,466</b>	<b>\$4,253</b>	<b>\$6,262</b>
<b>Nonclassroom dollars:</b>	<b>\$4,485</b>	<b>\$4,795</b>	<b>\$4,310</b>	<b>\$3,356</b>	<b>\$4,035</b>
Administration	950	886	1,060	721	1,109
Plant Operations	1,212	1,404	1,260	914	1,003
Food Service	421	394	399	366	390
Transportation	588	676	510	342	438
Student Support	814	862	657	581	556
Instruction Support	500	573	424	432	539

## STUDENT ACHIEVEMENT AND TEACHER INFORMATION

### Percentage of students meeting state standards (AIMS)



### Adequate Yearly Progress (AYP) toward federal goals

4 schools met all applicable AYP objectives for NCLB. 1 did not because some students did not demonstrate sufficient academic progress. 1 school was not eligible for an AYP determination.

### Student and teacher information

Measure	District	Peer Average	State Average
Attendance rate	94%	91%	94%
Graduation rate (2009)	78%	63%	76%
Poverty rate (2009)	34%	42%	21%
Student/teacher ratio	12.6	14.7	17.9
Average teacher salary	\$43,819	\$42,282	\$47,077
Average years' experience	10.9	12.3	10.6
Percent of teachers in first 3 years	18%	15%	20%

### Proposition 301

#### Teacher and other staff pay

On average, each teacher earned \$4,071 in additional pay, and each counselor earned \$1,317.

#### Performance pay plan goals and results

Type of goal	Goal met?
Student achievement	▀
Dropout/graduation rates	■
Student attendance	-
Parent/student satisfaction	-
Teacher attendance	-
Teacher professional development	▀
Teacher evaluations	-
Tutoring	■
Other	■

■ = yes, □ = no, ▀ = partially, and - = no goal set