

Holbrook Unified School District

Navajo County
Operational peer group: E
Legislative districts: 5

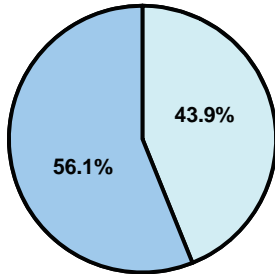
District size: Medium
Students attending: 1,973
Number of schools: 6

OPERATIONAL EFFICIENCY

Average per-pupil spending

District
State

Classroom
\$5,743
\$4,497



Nonclassroom
\$4,485
\$3,411

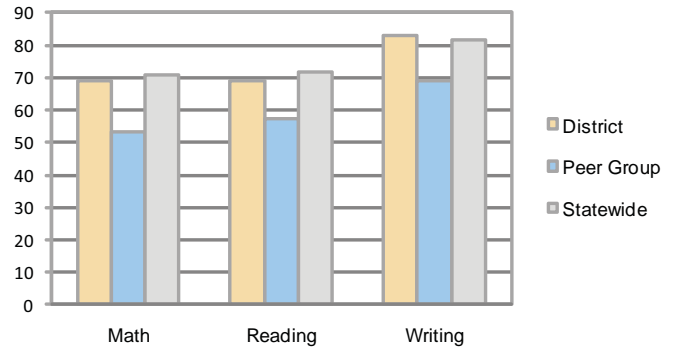
Total
\$10,228
\$7,908

5-year trend

Total spending per pupil increased by 26 percent. Spending in the classroom varied year to year and increased overall from 54.6 to 56.1 percent. Spending on administration decreased significantly, while spending in other nonclassroom areas remained fairly stable.

STUDENT ACHIEVEMENT AND TEACHER INFORMATION

Percentage of students meeting state standards (AIMS)



Adequate Yearly Progress (AYP) toward federal goals

5 schools met all applicable AYP objectives for NCLB. 1 did not because it is not eligible for AYP determination.

District's cost measures relative to peer group

Operational Area	Measure	District	Peer Average	State Average
Administration	Cost per pupil	\$950	\$1,148	\$729
	Students per administrator	54	51	66
Plant Operations	Cost per square foot	\$6.05	\$5.49	\$6.40
	Square footage per student	200	253	144
Food Service	Cost per meal equivalent	\$2.69	\$3.07	\$2.53
Transportation	Cost per mile	\$1.52	\$2.53	\$3.36
	Miles per rider	611	359	271

Very Low Low Comparable High Very High

Student and teacher information

Measure	District	Peer average	State average
Attendance rate	95%	93%	95%
Graduation rate (2008)	75%	70%	75%
Poverty rate	33%	31%	19%
Student/teacher ratio	13.2	14.9	17.1
Average teacher salary	\$47,970	\$41,086	\$45,209
Average years' experience	10.4	11.1	8.3
Percent of teachers in first 3 years	20%	20%	16%

Proposition 301

Teacher pay

On average, each teacher earned \$6,641 in additional salary, and each librarian and counselor earned between \$555 and \$2,536.

Performance pay plan goals and results

Type of goal	Goal met?
Student achievement	▲
Dropout/ graduation rates	□
Student attendance	
Parent/student satisfaction	
Teacher attendance	
Teacher professional development	■
Teacher evaluations	
Tutoring	▲
Other	■

■ = yes, □ = no, and ▲ = partially

Per-pupil spending by function

	District		Peer	State	National
	2008	2009	2009	2009	2007
Total	\$10,056	\$10,228	\$9,562	\$7,908	\$9,683
Classroom dollars	\$5,730	\$5,743	\$4,925	\$4,497	\$5,903
Nonclassroom dollars:	\$4,326	\$4,485	\$4,637	\$3,411	\$3,780
Administration	940	950	1,148	729	1,050
Plant Operations	1,177	1,212	1,379	920	951
Food Service	404	421	444	382	369
Transportation	558	588	554	343	406
Student Support	716	814	749	594	512
Instruction Support	531	500	356	431	470
Other	0	0	7	12	22