

# Humboldt Unified School District

Yavapai County

Efficiency peer groups 3 and T-4, Achievement peer group 3<sup>1</sup>

Legislative district(s): 1

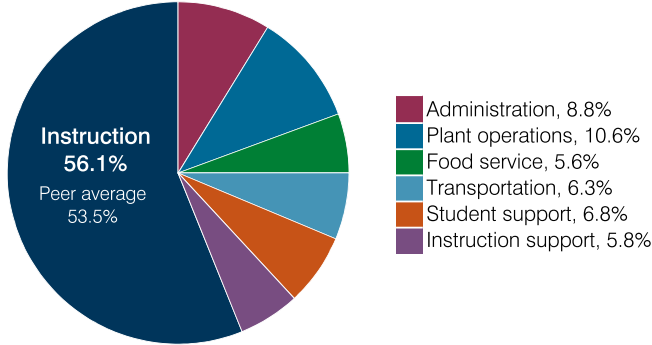
District size, location: Medium-large, Suburb

Students attending: 5,504

Number of schools: 9

## OPERATIONAL EFFICIENCY

### Spending by operational area



### Efficiency measures relative to peer averages

Operational area	Measure	District	Peer average	State average
Administration	Cost per pupil	\$666	\$846	\$860
	Students per administrative position	85	69	66
Plant operations	Cost per square foot	\$5.36	\$6.02	\$6.34
	Square footage per student	149	155	156
Food service	Cost per meal	\$3.21	\$3.20	\$3.02
Transportation	Cost per mile	\$3.25	\$3.72	\$4.05
	Cost per rider	\$1,154	\$1,330	\$1,301

Very low    Low    Comparable    High    Very high

### Per pupil spending

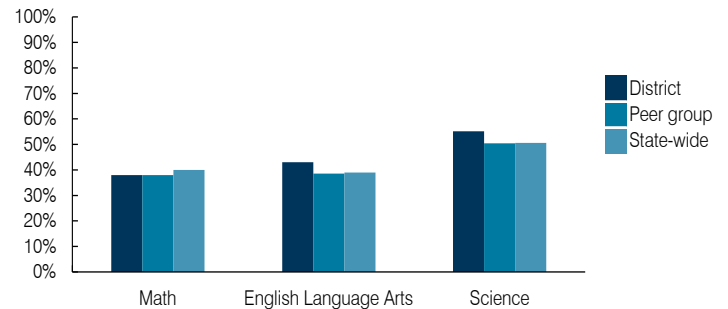
Spending by area	District		Peer average 2018	State average 2018
	2017	2018		
Instruction	\$ 4,021	\$ 4,244	\$ 4,106	\$ 4,480
Administration	631	666	846	860
Plant operations	811	800	963	988
Food service	429	425	325	425
Transportation	469	476	438	388
Student support	543	518	672	693
Instruction support	445	441	336	462
<b>Total operational</b>	<b>7,349</b>	<b>7,570</b>	<b>7,686</b>	<b>8,296</b>
Land and buildings	159	475	1,416	827
Equipment	246	302	473	409
Interest	292	216	268	228
Other	37	91	165	169
<b>Total nonoperational</b>	<b>734</b>	<b>1,084</b>	<b>2,322</b>	<b>1,633</b>
<b>Total per pupil spending</b>	<b>\$ 8,083</b>	<b>\$ 8,654</b>	<b>\$ 10,008</b>	<b>\$ 9,929</b>

## STUDENT ACHIEVEMENT, STUDENT AND TEACHER MEASURES, AND REVENUES

### ADE-assigned school letter grades

Grade	Number of schools	Percentage of schools
A	1	11%
B	5	56%
C	3	33%
D	0	0%
F	0	0%

### Students who passed State assessments



### Student and teacher measures

Measure	District	Peer average	State average
Attendance rate	94%	93%	94%
Graduation rate (2017)	90%	85%	78%
Poverty rate (2017)	19%	19%	19%
Special education population	12%	14%	12%
Students per teacher	19.4	18.7	18.4
Average teacher salary	\$45,912	\$46,859	\$48,951
Amount from Prop 301	\$6,946	\$7,342	\$6,411
Average years of teacher experience	10.0	12.1	11.4
Percentage of teachers in first 3 years	14%	15%	19%

### Per pupil revenues

Revenues by source	District		Peer average 2018	State average 2018
	2017	2018		
Federal	\$ 1,058	\$ 509	\$ 730	\$ 1,317
State	3,413	3,371	3,583	4,011
Local	3,992	4,160	5,234	4,592
<b>Total per pupil revenues</b>	<b>\$ 8,463</b>	<b>\$ 8,040</b>	<b>\$ 9,547</b>	<b>\$ 9,920</b>

### Select revenues from common sources

Source	District	Peer average	State average
Equalization formula funding	\$ 5,598	\$ 5,532	\$ 5,507
Grants	1,137	699	864
Donations and tax credits	66	75	184

### Select revenues from less common sources

Source	District	Peer average	Number of peers receiving
Desegregation	\$ 0	\$ 0	1 of 15
Small school adjustment	0	0	0 of 15
Federal impact aid	0	0	3 of 15
Voter-approved levy increases	671	692	15 of 15

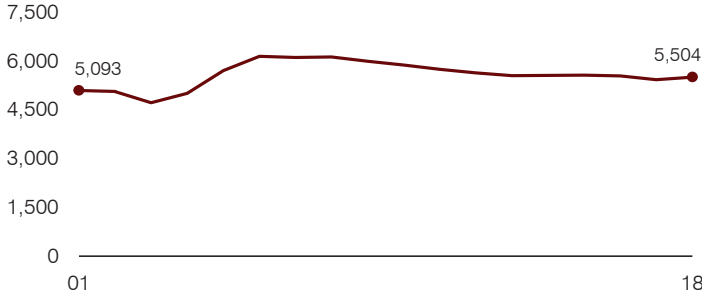
<sup>1</sup> See Appendix A for information such as districts included in each peer group and Appendix B for sources and methodology.

**Instructional spending percentage**

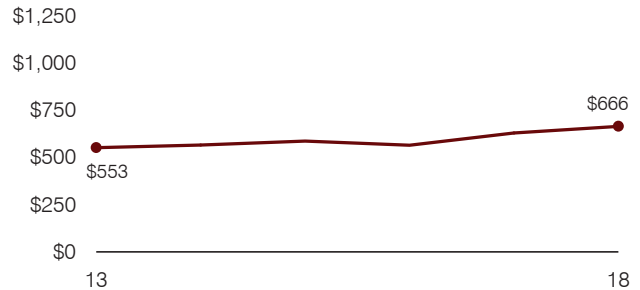
Year: 2001 2002 2003 2004 2005 2006 2007 2008 2009 2010 2011 2012 2013 2014 2015 2016 2017 2018  
 Percentage: 57.5 59.5 58.5 57.6 60.5 59.3 61.8 60.1 61.4 59.1 56.3 56.0 56.0 55.7 55.4 55.7 54.7 56.1

**TRENDS AND FINANCIAL STRESS ASSESSMENT**  
 Fiscal years as indicated

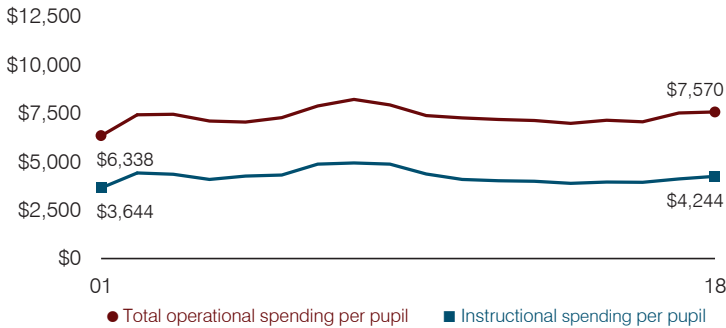
**Students attending**



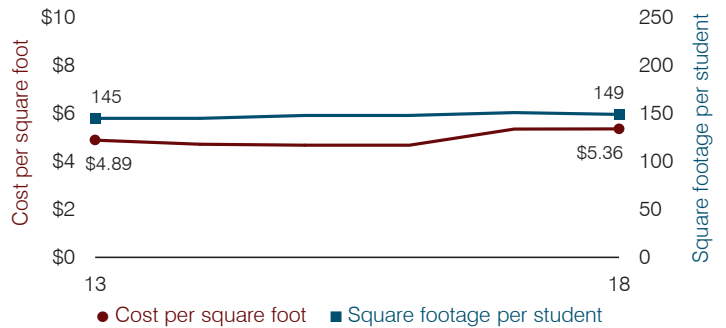
**Administrative cost per pupil**



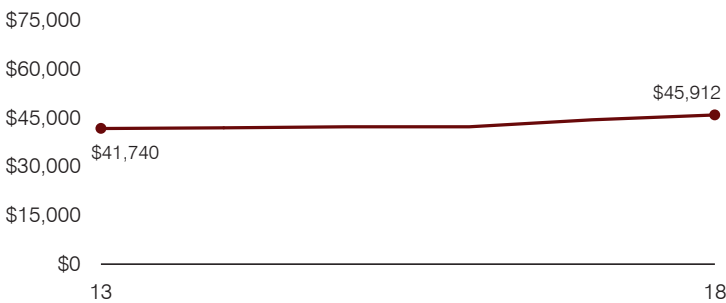
**Total operational and instructional spending per pupil (inflation adjusted to 2018 dollars)**



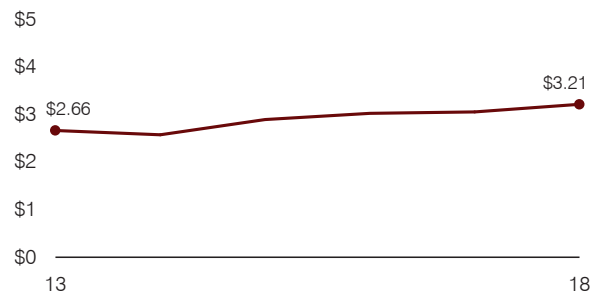
**Plant cost per square foot and square footage per student**



**Average teacher salary**



**Food service cost per meal**



**Financial stress assessment**

Overall financial stress level: **Low**

Measure: 2016 through 2018	Assessment
Change in number of district students	Steady
Spending exceeded operating/capital budgets	No overspending
Spending increase election results	Voter-rejected
Operating reserve percentage, Trend	9.3%, Increasing
Years of capital reserve held	More than 3 years
Current financial and internal control status	Compliant

Low
Moderate
High

**Transportation costs per mile and per rider**

