

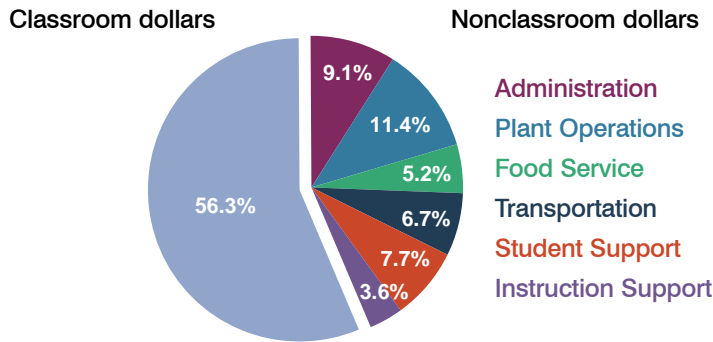
Humboldt Unified School District

Yavapai County
Peer groups: Efficiency Group 3, Achievement Group 3
Legislative district(s): 1 and 4

District size: Medium-Large
Students attending: 5,741
Number of schools: 9

OPERATIONAL EFFICIENCY

Spending by operational area

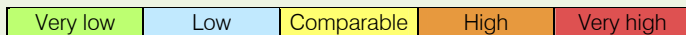


5-year trend

Total spending per pupil increased by 11 percent. Spending in the classroom varied year to year, decreasing significantly overall from 59.3 to 56.3 percent. Spending on administration, plant operations, student support, and instruction support increased slightly, and spending on other nonclassroom areas remained fairly stable.

District's cost measures relative to peer group

Operational Area	Measure	District	Peer Average	State Average
Administration	Cost per pupil	\$591	\$745	\$728
	Students per administrator	113	68	66
Plant Operations	Cost per square foot	\$5.31	\$5.71	\$6.10
	Square footage per student	139	163	152
Food Service	Cost per meal equivalent	\$2.29	\$2.76	\$2.45
Transportation	Cost per mile	\$2.56	\$3.17	\$3.39
	Miles per rider	350	270	283



Per-pupil spending by operational area

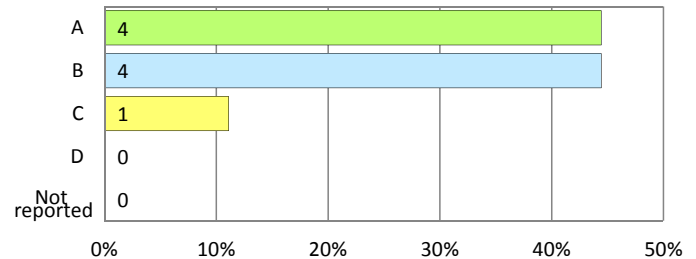
	District		Peer 2011	State 2011	National 2009
	2010	2011			
Total	\$6,450	\$6,469	\$7,065	\$7,485	\$10,591
Classroom dollars	\$3,810	\$3,639	\$3,826	\$4,098	\$6,456
Nonclassroom dollars:	\$2,640	\$2,830	\$3,239	\$3,387	\$4,135
Administration	555	591	745	728	1,147
Plant Operations	651	738	917	927	1,033
Food Service	329	336	329	375	404
Transportation	385	432	423	352	443
Student Support	480	500	519	571	573
Instruction Support	240	233	306	434	535

STUDENT ACHIEVEMENT AND TEACHER INFORMATION

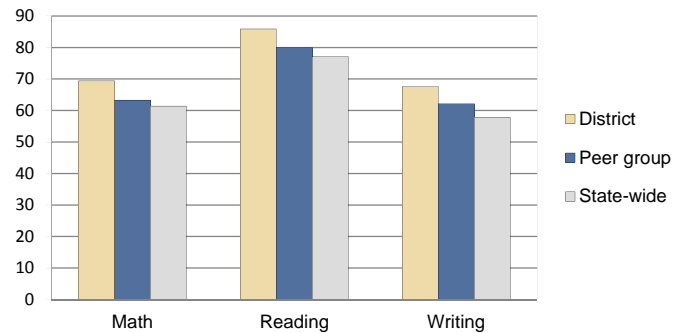
District and school letter grades

District grade: **B**

School grades (number and percentage):



Percentage of students meeting state standards (AIMS)



Student and teacher information

Measure	District	Peer Average	State Average
Attendance rate	94%	94%	95%
Graduation rate (2010)	82%	81%	78%
Poverty rate (2010)	24%	22%	22%
Students per teacher	18.5	18.0	18.1
Average teacher salary	\$40,602	\$46,077	\$45,637
Average years of experience	11.2	12.6	10.9
Percent of teachers in first 3 years	9%	9%	16%

Proposition 301 pay, goals, and results

Average additional salary earned by teachers: \$3,192

Type of goal	Goal met?
Student achievement	-
Dropout/graduation rates	■
Student attendance	■
Parent/student satisfaction	■
Teacher attendance	-
Teacher professional development	■
Teacher evaluations	■
Tutoring	-
Other	■

■ = yes, □ = no, ▴ = partially, and - = no goal set