

Humboldt Unified School District

Yavapai County
Operational peer group: C
Legislative districts: 1, 4

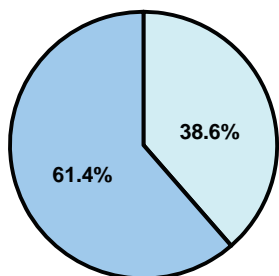
District size: Medium-Large
Students attending: 5,994
Number of schools: 9

OPERATIONAL EFFICIENCY

Average per-pupil spending

District
State

Classroom
\$4,215
\$4,497



Nonclassroom
\$2,647
\$3,411

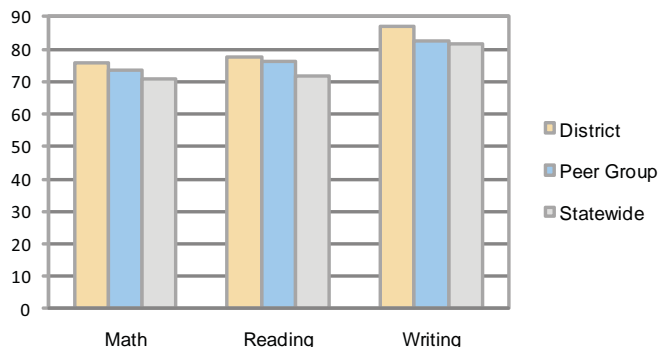
Total
\$6,862
\$7,908

5-year trend

Total spending per pupil increased by 29 percent. Spending in the classroom was very inconsistent year to year and increased significantly overall from 57.6 to 61.4 percent. Spending on administration, plant operations, and transportation decreased, while spending in other nonclassroom areas remained fairly stable.

STUDENT ACHIEVEMENT AND TEACHER INFORMATION

Percentage of students meeting state standards (AIMS)



Adequate Yearly Progress (AYP) toward federal goals

8 schools met all applicable AYP objectives for NCLB. 1 did not because some students did not demonstrate sufficient academic progress.

Student and teacher information

Measure	District	Peer average	State average
Attendance rate	95%	95%	95%
Graduation rate (2008)	82%	84%	75%
Poverty rate	17%	13%	19%
Student/teacher ratio	17.4	17.5	17.1
Average teacher salary	\$44,426	\$44,052	\$45,209
Average years' experience	10.4	8.4	8.3
Percent of teachers in first 3 years	10%	30%	16%

District's cost measures relative to peer group

Operational Area	Measure	District	Peer Average	State Average
Administration	Cost per pupil	\$535	\$733	\$729
	Students per administrator	NR	63	66
Plant Operations	Cost per square foot	\$5.17	\$6.20	\$6.40
	Square footage per student	127	144	144
Food Service	Cost per meal equivalent	\$2.41	\$2.79	\$2.53
Transportation	Cost per mile	\$3.03	\$3.31	\$3.36
	Miles per rider	227	230	271

Very Low Low Comparable High Very High

Proposition 301

Teacher pay

On average, each teacher earned an additional \$5,039 in salary, and each librarian, speech pathologist, counselor, and nurse earned between \$4,857 and \$5,050.

Performance pay plan goals and results

Type of goal	Goal met?
Student achievement	■
Dropout/ graduation rates	■
Student attendance	■
Parent/student satisfaction	■
Teacher attendance	■
Teacher professional development	■
Teacher evaluations	■
Tutoring	■
Other	■

■ = yes, □ = no, and ▤ = partially

Per-pupil spending by function

	District		Peer	State	National
	2008	2009	2009	2009	2007
Total	\$7,010	\$6,862	\$7,484	\$7,908	\$9,683
Classroom dollars	\$4,211	\$4,215	\$4,298	\$4,497	\$5,903
Nonclassroom dollars:	\$2,799	\$2,647	\$3,186	\$3,411	\$3,780
Administration	572	535	733	729	1,050
Plant Operations	723	657	869	920	951
Food Service	385	355	332	382	369
Transportation	420	384	400	343	406
Student Support	455	481	543	594	512
Instruction Support	244	235	295	431	470
Other	0	0	14	12	22