

# Hyder Elementary School District

Yuma County

Efficiency peer groups 11 and T-11, Achievement peer group 17<sup>1</sup>

Legislative district(s): 13

District size, location:

Very small, Rural

Students attending:

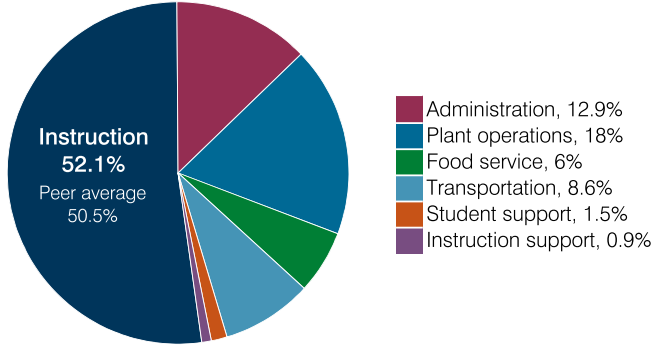
86

Number of schools:

1

## OPERATIONAL EFFICIENCY

### Spending by operational area



### Efficiency measures relative to peer averages

Operational area	Measure	District	Peer average	State average
Administration	Cost per pupil	\$2,900	\$3,064	\$860
	Students per administrative position	43	33	66
Plant operations	Cost per square foot	\$7.35	\$7.31	\$6.34
	Square footage per student	551	371	156
Food service	Cost per meal	\$4.94	\$5.79	\$3.02
Transportation	Cost per mile	\$2.18	\$1.94	\$4.05
	Cost per rider	\$1,691	\$1,614	\$1,301

### Per pupil spending

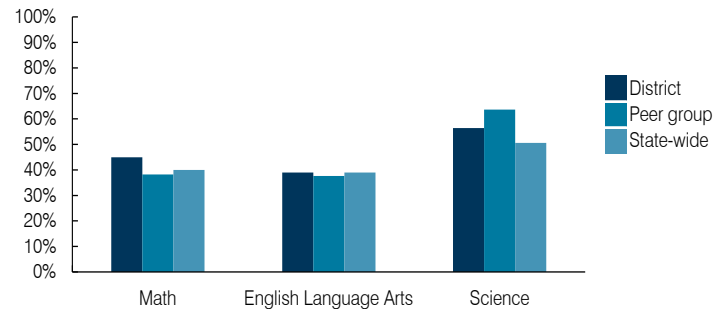
Spending by area	District		Peer average 2018	State average 2018
	2017	2018		
Instruction	\$ 10,617	\$ 11,749	\$ 8,493	\$ 4,480
Administration	2,877	2,900	3,064	860
Plant operations	4,441	4,050	2,439	988
Food service	1,370	1,359	932	425
Transportation	1,595	1,949	973	388
Student support	291	327	656	693
Instruction support	2,217	213	400	462
<b>Total operational</b>	<b>23,408</b>	<b>22,547</b>	<b>16,957</b>	<b>8,296</b>
Land and buildings	98	276	965	827
Equipment	638	1,830	562	409
Interest	12	14	25	228
Other	143	105	88	169
<b>Total nonoperational</b>	<b>891</b>	<b>2,225</b>	<b>1,640</b>	<b>1,633</b>
<b>Total per pupil spending</b>	<b>\$ 24,299</b>	<b>\$ 24,772</b>	<b>\$ 18,597</b>	<b>\$ 9,929</b>

## STUDENT ACHIEVEMENT, STUDENT AND TEACHER MEASURES, AND REVENUES

### ADE-assigned school letter grades

Grade	Number of schools	Percentage of schools
A	0	0%
B	1	100%
C	0	0%
D	0	0%
F	0	0%

### Students who passed State assessments



### Student and teacher measures

Measure	District	Peer average	State average
Attendance rate	96%	94%	94%
Graduation rate (2017)	N/A	N/A	N/A
Poverty rate (2017)	18%	19%	19%
Special education population	12%	13%	12%
Students per teacher	10.7	14.1	18.4
Average teacher salary	\$60,969	\$50,510	\$48,951
Amount from Prop 301	\$2,983	\$5,096	\$6,411
Average years of teacher experience	29.1	13.8	11.4
Percentage of teachers in first 3 years	0%	9%	19%

### Per pupil revenues

Revenues by source	District		Peer average 2018	State average 2018
	2017	2018		
Federal	\$ 6,005	\$ 2,253	\$ 3,021	\$ 1,317
State	651	1,040	4,788	4,011
Local	18,088	19,671	12,812	4,592
<b>Total per pupil revenues</b>	<b>\$ 24,744</b>	<b>\$ 22,964</b>	<b>\$ 20,621</b>	<b>\$ 9,920</b>

### Select revenues from common sources

Equalization formula funding	\$ 9,911	\$ 9,424	\$ 8,282	\$ 5,585
Grants	6,130	2,770	3,020	1,241
Donations and tax credits	279	284	125	90

### Select revenues from less common sources

			Number of peers receiving
Desegregation	\$ 0	\$ 0	0 of 56
Small school adjustment	5,514	8,822	45 of 56
Federal impact aid	0	0	5 of 56
Voter-approved levy increases	510	0	5 of 56

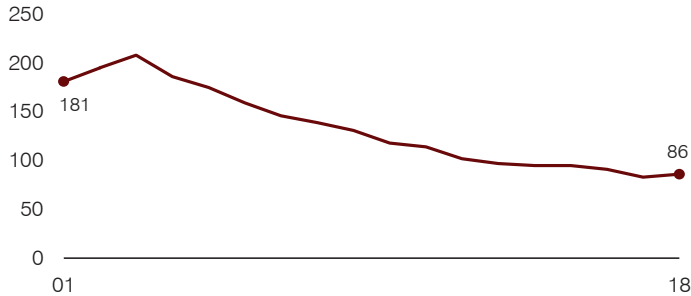
<sup>1</sup> See Appendix A for information such as districts included in each peer group and Appendix B for sources and methodology.

**Instructional spending percentage**

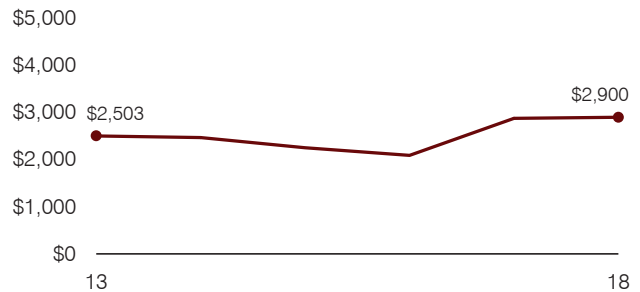
Year: 2001 2002 2003 2004 2005 2006 2007 2008 2009 2010 2011 2012 2013 2014 2015 2016 2017 2018  
 Percentage: 49.8 50.5 53.1 55.1 55.1 55.8 44.9 52.2 53.6 55.2 54.1 54.1 51.9 52.6 47.7 47.6 45.4 52.1

**TRENDS AND FINANCIAL STRESS ASSESSMENT**  
 Fiscal years as indicated

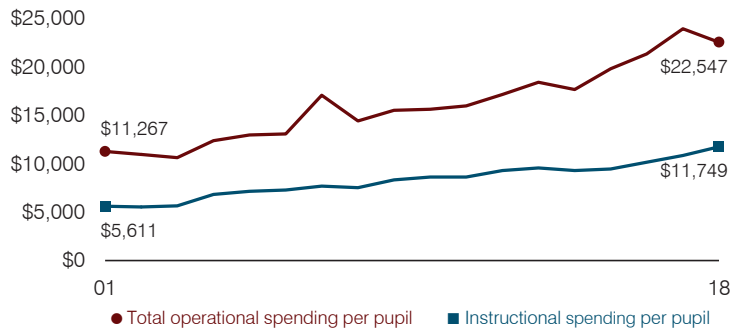
**Students attending**



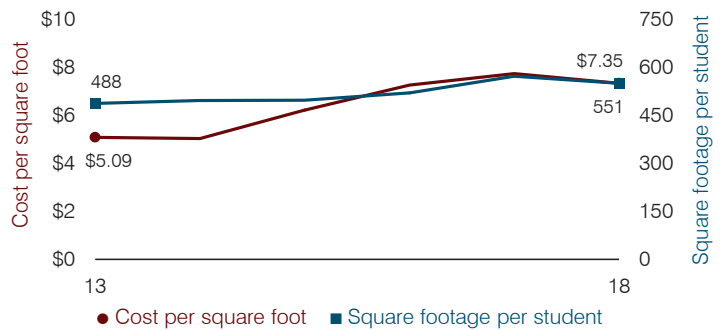
**Administrative cost per pupil**



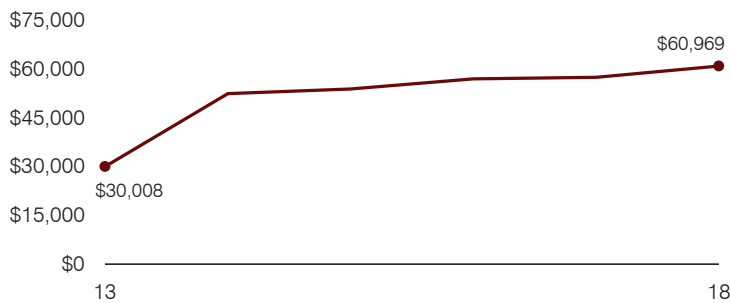
**Total operational and instructional spending per pupil (inflation adjusted to 2018 dollars)**



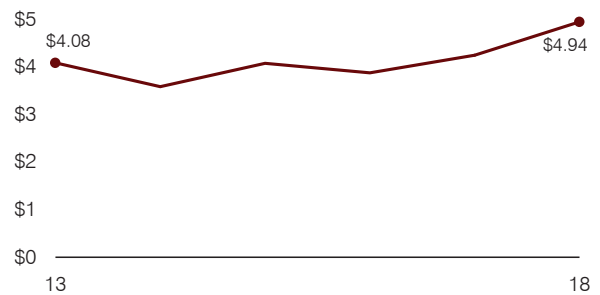
**Plant cost per square foot and square footage per student**



**Average teacher salary**



**Food service cost per meal**



**Financial stress assessment**

Overall financial stress level: **Low**

Measure: 2016 through 2018	Assessment
Change in number of district students	Small school adjustment
Spending exceeded operating/capital budgets	No overspending
Spending increase election results	No election held
Operating reserve percentage, Trend	4.8%, Decreasing
Years of capital reserve held	More than 3 years
Current financial and internal control status	Marginally compliant

Low
Moderate
High

**Transportation costs per mile and per rider**

