

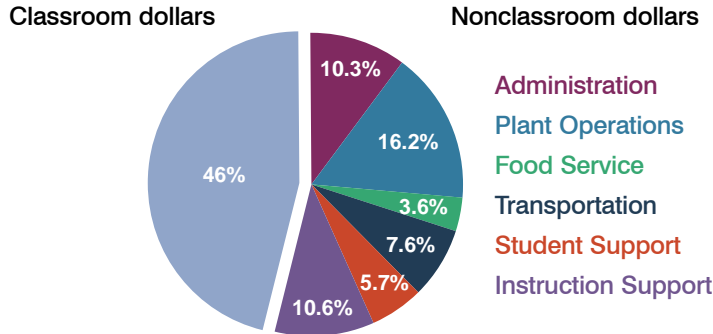
Indian Oasis-Baboquivari Unified School District

Pima County
Peer groups: Efficiency Group 5, Achievement Group 8
Legislative district(s): 25

District size: Medium
Students attending: 941
Number of schools: 3

OPERATIONAL EFFICIENCY

Spending by operational area



5-year trend

Total spending per pupil increased by 13 percent. Spending in the classroom was very inconsistent year to year, decreasing significantly overall from 49.3 to 46 percent. Spending on plant operations and instruction support increased significantly, and spending on student support decreased significantly. Spending on other nonclassroom areas varied year to year.

District's cost measures relative to peer group

Operational Area	Measure	District	Peer Average	State Average
Administration	Cost per pupil	\$1,392	\$1,104	\$728
	Students per administrator	57	56	66
Plant Operations	Cost per square foot	\$6.53	\$4.74	\$6.10
	Square footage per student	335	259	152
Food Service	Cost per meal equivalent	\$2.91	\$2.98	\$2.45
Transportation	Cost per mile	\$3.23	\$2.71	\$3.39
	Miles per rider	488	336	283

Very low Low Comparable High Very high

Per-pupil spending by operational area

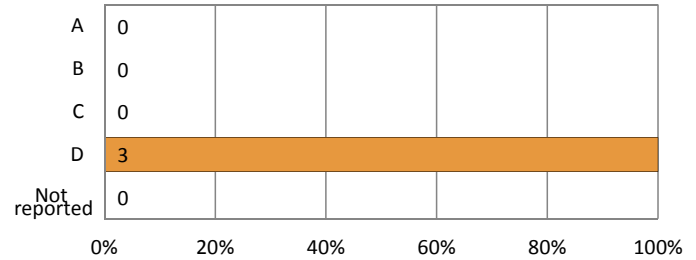
	District		Peer 2011	State 2011	National 2009
	2010	2011			
Total	\$12,461	\$13,475	\$8,531	\$7,485	\$10,591
Classroom dollars	\$5,605	\$6,202	\$4,298	\$4,098	\$6,456
Nonclassroom dollars:	\$6,856	\$7,273	\$4,233	\$3,387	\$4,135
Administration	1,128	1,392	1,104	728	1,147
Plant Operations	1,730	2,189	1,213	927	1,033
Food Service	419	482	421	375	404
Transportation	1,102	1,026	527	352	443
Student Support	1,114	761	651	571	573
Instruction Support	1,363	1,423	317	434	535

STUDENT ACHIEVEMENT AND TEACHER INFORMATION

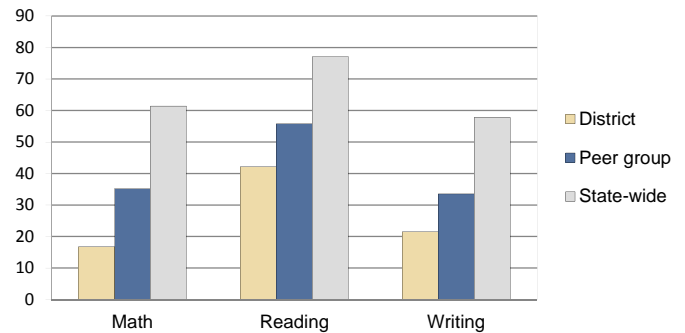
District and school letter grades

District grade: **D**

School grades (number and percentage):



Percentage of students meeting state standards (AIMS)



Student and teacher information

Measure	District	Peer Average	State Average
Attendance rate	95%	92%	95%
Graduation rate (2010)	56%	68%	78%
Poverty rate (2010)	37%	40%	22%
Students per teacher	12.7	15.5	18.1
Average teacher salary	\$41,343	\$42,449	\$45,637
Average years of experience	9.0	12.2	10.9
Percent of teachers in first 3 years	26%	16%	16%

Proposition 301 pay, goals, and results

Average additional salary earned by teachers: \$2,755

Type of goal	Goal met?
Student achievement	■
Dropout/graduation rates	-
Student attendance	▲
Parent/student satisfaction	-
Teacher attendance	-
Teacher professional development	-
Teacher evaluations	-
Tutoring	-
Other	-

■ = yes, □ = no, ▲ = partially, and - = no goal set