

# Indian Oasis-Baboquivari Unified School District

Pima County  
Operational peer group: E  
Legislative districts: 25

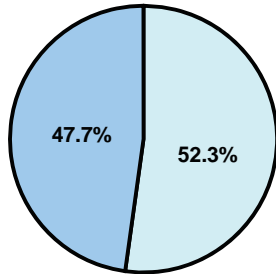
District size: Medium  
Students attending: 881  
Number of schools: 4

## OPERATIONAL EFFICIENCY

### Average per-pupil spending

District  
State

Classroom  
**\$6,407**  
\$4,497



Nonclassroom  
**\$7,011**  
\$3,411

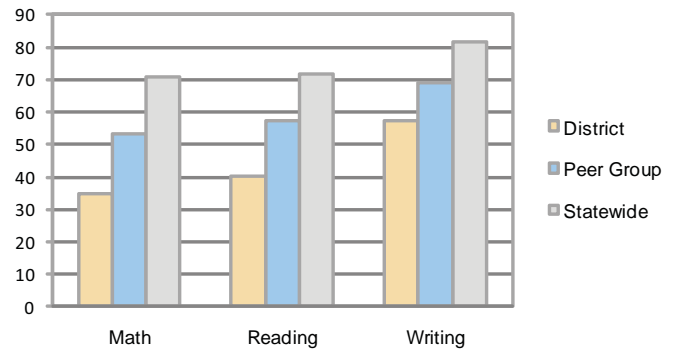
Total  
**\$13,418**  
\$7,908

### 5-year trend

Student enrollment decreased by 23 percent, which contributed to the 39 percent increase in total spending per pupil. Spending in the classroom was very inconsistent year to year and decreased significantly overall from 52.2 to 47.7 percent. Spending on plant operations, transportation, and instruction support increased, while spending in other nonclassroom areas varied year to year.

## STUDENT ACHIEVEMENT AND TEACHER INFORMATION

### Percentage of students meeting state standards (AIMS)



### Adequate Yearly Progress (AYP) toward federal goals

4 schools did not meet applicable AYP objectives for NCLB because they failed to meet 1 or more of the following objectives: percentage of students tested (3); academic progress (3); attendance rate (1); graduation rate (1).

### Student and teacher information

Measure	District	Peer average	State average
Attendance rate	90%	93%	95%
Graduation rate (2008)	39%	70%	75%
Poverty rate	51%	31%	19%
Student/teacher ratio	11.7	14.9	17.1
Average teacher salary	\$40,375	\$41,086	\$45,209
Average years' experience	10.8	11.1	8.3
Percent of teachers in first 3 years	19%	20%	16%

### District's cost measures relative to peer group

Operational Area	Measure	District	Peer Average	State Average
Administration	Cost per pupil	\$1,280	\$1,148	\$729
	Students per administrator	46	51	66
Plant Operations	Cost per square foot	\$5.68	\$5.49	\$6.40
	Square footage per student	358	253	144
Food Service	Cost per meal equivalent	\$2.95	\$3.07	\$2.53
Transportation	Cost per mile	\$2.80	\$2.53	\$3.36
	Miles per rider	327	359	271

Very Low    Low    Comparable    High    Very High

### Per-pupil spending by function

	District		Peer	State	National
	2008	2009	2009	2009	2007
<b>Total</b>	<b>\$12,044</b>	<b>\$13,418</b>	<b>\$9,562</b>	<b>\$7,908</b>	<b>\$9,683</b>
<b>Classroom dollars</b>	<b>\$6,151</b>	<b>\$6,407</b>	<b>\$4,925</b>	<b>\$4,497</b>	<b>\$5,903</b>
<b>Nonclassroom dollars:</b>	<b>\$5,893</b>	<b>\$7,011</b>	<b>\$4,637</b>	<b>\$3,411</b>	<b>\$3,780</b>
Administration	1,067	1,280	1,148	729	1,050
Plant Operations	1,624	2,032	1,379	920	951
Food Service	496	484	444	382	369
Transportation	855	1,038	554	343	406
Student Support	1,294	1,422	749	594	512
Instruction Support	557	755	356	431	470
Other	0	0	7	12	22

### Proposition 301

#### Teacher pay

On average, each teacher, librarian, and counselor earned between \$4,156 and \$4,335 in additional salary, and each instructional aide earned an additional \$1,861.

#### Performance pay plan goals and results

Type of goal	Goal met?
Student achievement	
Dropout/ graduation rates	
Student attendance	
Parent/student satisfaction	
Teacher attendance	
Teacher professional development	■
Teacher evaluations	
Tutoring	
Other	

■ = yes, □ = no, and ▬ = partially