

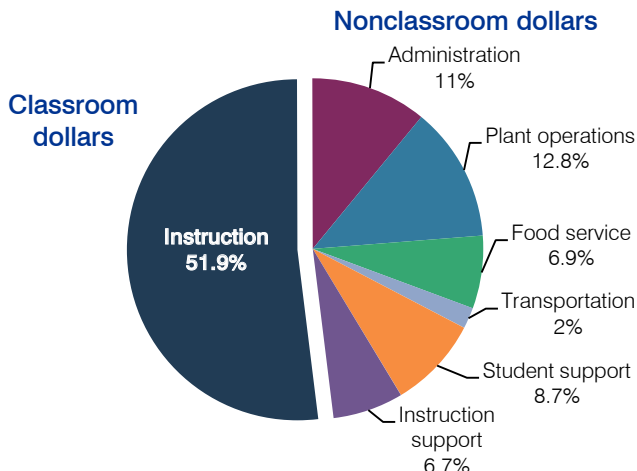
# Isaac Elementary School District

Maricopa County  
 Efficiency peer groups 8 and T-3, Achievement peer group 16  
 Legislative district(s): 19, 29 and 30

District size / location: Medium-Large, City  
 Students attending: 6,676  
 Number of schools: 10

## OPERATIONAL EFFICIENCY

### Spending by operational area



### 5-year spending trend

Total spending per pupil decreased by 1 percent. Spending in the classroom varied year to year, decreasing overall from 56.3 to 51.9 percent. Spending on administration, plant operations, and instruction support increased substantially, and spending on student support decreased. Spending on other nonclassroom areas remained stable.

### Cost measures relative to peer averages

Operational area	Measure	District	Peer average	State average
Administration	Cost per pupil	\$907	\$796	\$736
	Students per administrator	76	75	66
Plant operations	Cost per square foot	\$9.01	\$6.25	\$6.09
	Square footage per student	117	131	152
Food service	Cost per meal equivalent	\$2.32	\$2.45	\$2.47
Transportation	Cost per mile	\$5.85	\$3.80	\$3.50
	Cost per rider	\$1,413	\$940	\$982

Very low Low Comparable High Very high

### Per-pupil spending by operational area

	District		Peer average	State average	National average
	2011	2012	2012	2012	2010
<b>Total</b>	<b>\$8,170</b>	<b>\$8,232</b>	<b>\$6,968</b>	<b>\$7,475</b>	<b>\$10,652</b>
<b>Classroom dollars</b>	<b>4,042</b>	<b>4,274</b>	<b>3,582</b>	<b>4,053</b>	<b>6,526</b>
<b>Nonclassroom dollars:</b>	<b>4,128</b>	<b>3,958</b>	<b>3,386</b>	<b>3,422</b>	<b>4,126</b>
Administration	978	907	796	736	1,139
Plant operations	1,063	1,057	811	928	1,012
Food service	526	566	523	382	405
Transportation	165	168	271	362	443
Student support	698	712	522	578	592
Instruction support	698	548	463	436	535

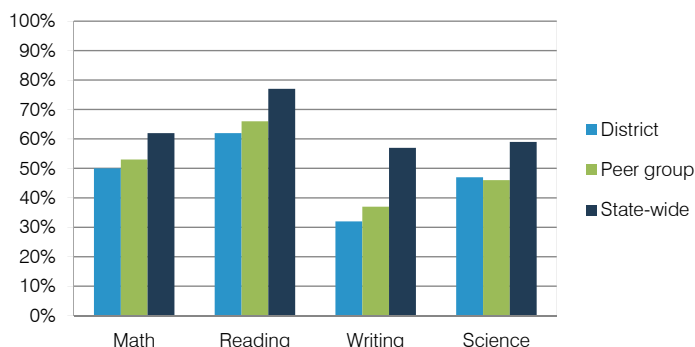
## STUDENT ACHIEVEMENT, TEACHER MEASURES, AND FINANCIAL ASSESSMENT

### ADE-reported district and school letter grades

District grade: **C**

Grade	Number of schools	Percentage of schools
A	0	0%
B	1	10%
C	9	90%
D	0	0%
F	0	0%
Not rated	0	0%

### Percentage of students who met state standards (AIMS)



### Student and teacher measures

Measure	District	Peer average	State average
Attendance rate	95%	95%	94%
Graduation rate (2011)	N/A	N/A	N/A
Poverty rate (2011)	45%	49%	25%
Students per teacher	17.1	18.3	18.1
Average teacher salary	\$44,709	\$45,716	\$45,193
Amount from Proposition 301	\$2,339	\$2,541	\$3,195
Average years of teacher experience	10.1	9.3	11.0
Percentage of teachers in first 3 years	22%	23%	16%

### Financial stress assessment

Overall financial stress level: **Low**

Measure: 2010 through 2012	Assessment
Number of students attending	Concentrated decrease
Spending exceeded operating/capital budgets	No overspending
Spending increase election results	Voter-approved
Operating reserve percentage (max. 4%), trend	3.5%, Varying
Years of capital reserve held	More than 3 years
Current financial and internal control status	Compliant

Stress level: **Low** **Moderate** **High**