

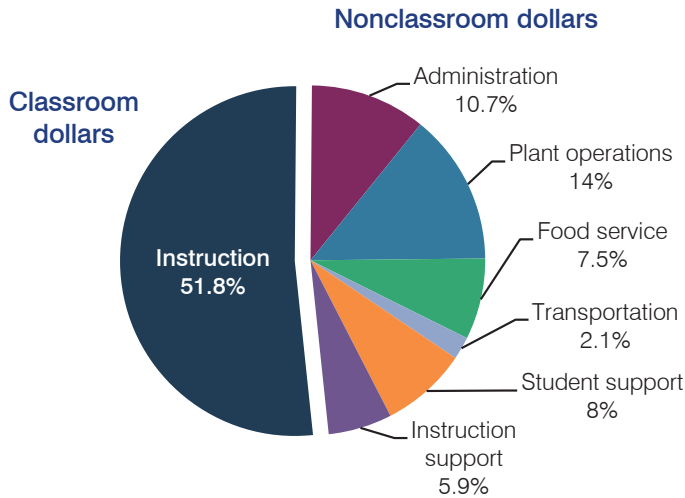
# Isaac Elementary School District

Maricopa County  
 Efficiency peer groups 8 and T-3, Achievement peer group 15  
 Legislative district(s): 19, 29 and 30

District size, location: Medium-Large, City  
 Students attending: 6,620  
 Number of schools: 10

## OPERATIONAL EFFICIENCY

### Spending by operational area



### 5-year spending trend

Total spending per pupil decreased by 13 percent. Spending in the classroom varied year to year, decreasing overall from 56.8 to 51.8 percent. Overall, spending on plant operations increased substantially and spending on administration increased, while spending on student support decreased. Spending on other nonclassroom areas remained fairly stable.

### Cost measures relative to peer averages

Operational area	Measure	District	Peer average	State average
Administration	Cost per pupil	\$854	\$791	\$746
	Students per administrator	82	69	67
Plant operations	Cost per square foot	\$9.42	\$6.28	\$6.03
	Square footage per student	118	138	153
Food service	Cost per meal equivalent	\$2.47	\$2.54	\$2.58
Transportation	Cost per mile	\$5.87	\$4.05	\$3.55
	Cost per rider	\$1,347	\$1,000	\$1,015

Very low   Low   Comparable   High   Very high

### Per pupil spending by operational area

	District		Peer average 2013	State average 2013	National average 2011
	2012	2013			
<b>Total</b>	<b>\$8,232</b>	<b>\$7,949</b>	<b>\$7,193</b>	<b>\$7,496</b>	<b>\$10,658</b>
<b>Classroom dollars</b>	<b>4,274</b>	<b>4,120</b>	<b>3,672</b>	<b>4,031</b>	<b>6,520</b>
<b>Nonclassroom dollars:</b>	<b>3,958</b>	<b>3,829</b>	<b>3,521</b>	<b>3,465</b>	<b>4,138</b>
Administration	907	854	791	746	1,138
Plant operations	1,057	1,114	842	924	1,015
Food service	566	592	541	396	412
Transportation	168	166	273	369	452
Student support	712	639	541	582	593
Instruction support	548	464	533	448	528

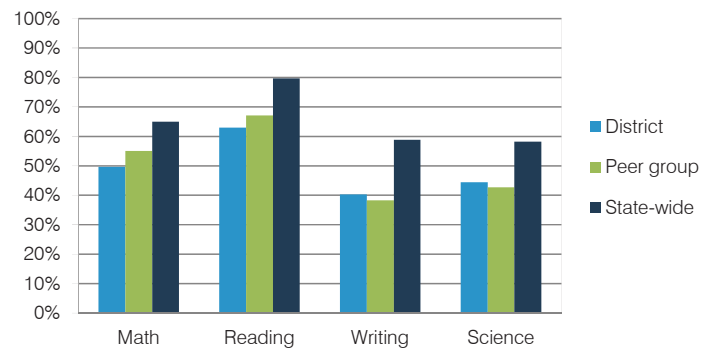
## STUDENT ACHIEVEMENT, TEACHER MEASURES, AND FINANCIAL ASSESSMENT

### ADE-reported district and school letter grades

District grade: **C**

Grade	Number of schools	Percentage of schools
A	0	0%
B	1	10%
C	6	60%
D	3	30%
F	0	0%
Not rated	0	0%

### Students who met state standards (AIMS)



### Student and teacher measures

Measure	District	Peer average	State average
Attendance rate	94%	94%	94%
Graduation rate (2012)	N/A	N/A	N/A
Poverty rate (2012)	47%	50%	25%
Students per teacher	17.2	18.8	18.3
Average teacher salary	\$43,904	\$46,010	\$45,264
Amount from Proposition 301	\$2,679	\$2,972	\$3,784
Average years of teacher experience	10.1	8.7	10.9
Percentage of teachers in first 3 years	22%	32%	19%

### Financial stress assessment

Overall financial stress level: **Low**

Measure: 2011 through 2013

Measure	Assessment
Number of students attending district	Moderate decrease
Spending exceeded operating/capital budgets	No overspending
Spending increase election results	Voter-approved
Operating reserve percentage (max. 4%), trend	3.6%, Increasing
Years of capital reserve held	More than 3 years
Current financial and internal control status	Compliant

Stress level

