

# Isaac Elementary School District

Maricopa County  
Operational peer group: I  
Legislative districts: 14

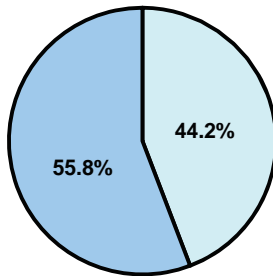
District size: Medium-Large  
Students attending: 7,358  
Number of schools: 12

## OPERATIONAL EFFICIENCY

### Average per-pupil spending

District  
State

**Classroom**  
\$4,895  
\$4,497



**Nonclassroom**  
\$3,872  
\$3,411

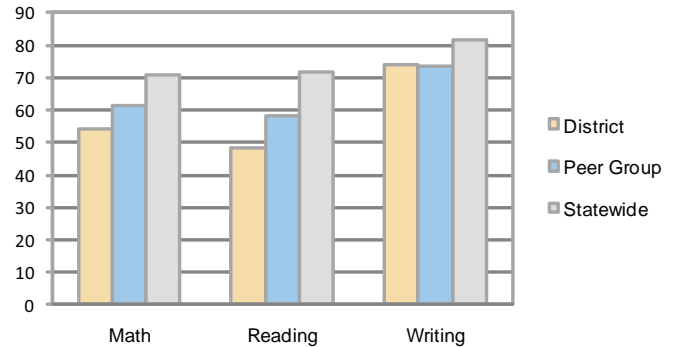
**Total**  
\$8,767  
\$7,908

### 5-year trend

Total spending per pupil increased by 30 percent. Spending in the classroom varied year to year and decreased significantly overall from 58.3 to 55.8 percent. Spending on administration and instruction support increased, while spending in other nonclassroom areas varied year to year.

## STUDENT ACHIEVEMENT AND TEACHER INFORMATION

### Percentage of students meeting state standards (AIMS)



### Adequate Yearly Progress (AYP) toward federal goals

3 schools met all applicable AYP objectives for NCLB. 9 did not because some students did not demonstrate sufficient academic progress.

### District's cost measures relative to peer group

Operational Area	Measure	District	Peer Average	State Average
Administration	Cost per pupil	\$809	\$840	\$729
	Students per administrator	61	69	66
Plant Operations	Cost per square foot	\$7.77	\$7.16	\$6.40
	Square footage per student	119	123	144
Food Service	Cost per meal equivalent	\$2.46	\$2.38	\$2.53
Transportation	Cost per mile	\$6.31	\$5.18	\$3.36
	Miles per rider	205	132	271

Very Low    Low    Comparable    High    Very High

### Student and teacher information

Measure	District	Peer average	State average
Attendance rate	95%	95%	95%
Graduation rate (2008)	N/A	86%	75%
Poverty rate	31%	31%	19%
Student/teacher ratio	15.4	16.2	17.1
Average teacher salary	\$48,371	\$46,306	\$45,209
Average years' experience	9.3	8.5	8.3
Percent of teachers in first 3 years	27%	33%	16%

### Proposition 301

#### Teacher pay

On average, each teacher earned an additional \$6,745 in salary, and each librarian, speech pathologist, counselor, intervention specialist, and academic coach earned between \$2,926 and \$6,745.

#### Performance pay plan goals and results

Type of goal	Goal met?
Student achievement	■
Dropout/ graduation rates	■
Student attendance	■
Parent/student satisfaction	■
Teacher attendance	■
Teacher professional development	■
Teacher evaluations	■
Tutoring	■
Other	■

■ = yes, □ = no, and ▴ = partially

### Per-pupil spending by function

	District		Peer	State	National
	2008	2009	2009	2009	2007
<b>Total</b>	<b>\$9,098</b>	<b>\$8,767</b>	<b>\$8,194</b>	<b>\$7,908</b>	<b>\$9,683</b>
<b>Classroom dollars</b>	<b>\$5,170</b>	<b>\$4,895</b>	<b>\$4,515</b>	<b>\$4,497</b>	<b>\$5,903</b>
<b>Nonclassroom dollars:</b>	<b>\$3,928</b>	<b>\$3,872</b>	<b>\$3,679</b>	<b>\$3,411</b>	<b>\$3,780</b>
Administration	809	809	840	729	1,050
Plant Operations	1,010	927	890	920	951
Food Service	625	588	525	382	369
Transportation	207	181	253	343	406
Student Support	765	802	626	594	512
Instruction Support	512	565	545	431	470
Other	0	0	0	12	22