

# J.O. Combs Unified School District

Pinal County

Efficiency peer groups 3 and T-4, Achievement peer group 2<sup>1</sup>

Legislative district(s): 8 and 16

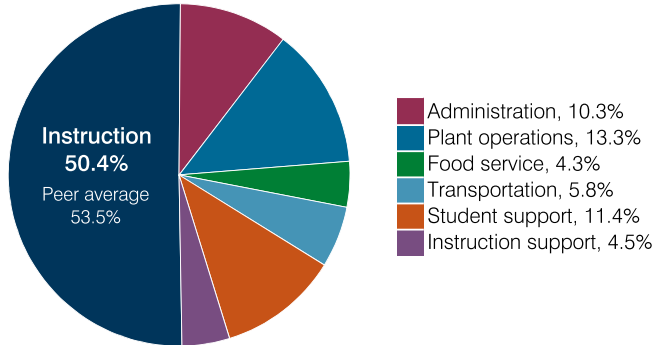
District size, location: Medium-large, Suburb

Students attending: 4,431

Number of schools: 7

## OPERATIONAL EFFICIENCY

### Spending by operational area



### Efficiency measures relative to peer averages

Operational area	Measure	District	Peer average	State average
Administration	Cost per pupil	\$730	\$846	\$860
	Students per administrative position	77	69	66
Plant operations	Cost per square foot	\$6.41	\$6.02	\$6.34
	Square footage per student	147	155	156
Food service	Cost per meal	\$3.15	\$3.20	\$3.02
Transportation	Cost per mile	\$3.49	\$3.72	\$4.05
	Cost per rider	\$1,023	\$1,330	\$1,301

Very low    Low    Comparable    High    Very high

### Per pupil spending

Spending by area	District		Peer average 2018	State average 2018
	2017	2018		
Instruction	\$ 3,355	\$ 3,584	\$ 4,106	\$ 4,480
Administration	749	730	846	860
Plant operations	909	945	963	988
Food service	302	307	325	425
Transportation	419	419	438	388
Student support	798	809	672	693
Instruction support	289	319	336	462
<b>Total operational</b>	<b>6,821</b>	<b>7,113</b>	<b>7,686</b>	<b>8,296</b>
Land and buildings	50	1,409	1,416	827
Equipment	241	567	473	409
Interest	101	125	268	228
Other	185	151	165	169
<b>Total nonoperational</b>	<b>577</b>	<b>2,252</b>	<b>2,322</b>	<b>1,633</b>
<b>Total per pupil spending</b>	<b>\$ 7,398</b>	<b>\$ 9,365</b>	<b>\$ 10,008</b>	<b>\$ 9,929</b>

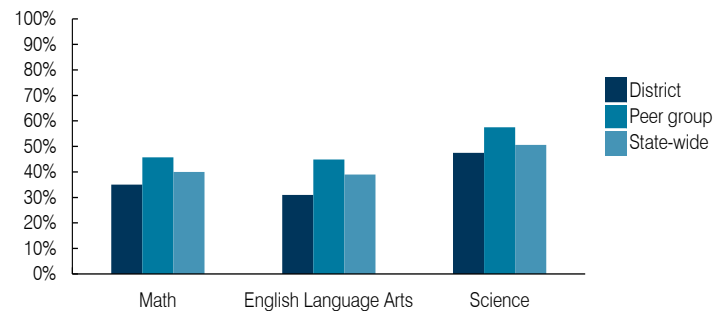
<sup>1</sup> See Appendix A for information such as districts included in each peer group and Appendix B for sources and methodology.

## STUDENT ACHIEVEMENT, STUDENT AND TEACHER MEASURES, AND REVENUES

### ADE-assigned school letter grades

Grade	Number of schools	Percentage of schools
A	1	14%
B	0	0%
C	5	72%
D	1	14%
F	0	0%

### Students who passed State assessments



### Student and teacher measures

Measure	District	Peer average	State average
Attendance rate	94%	94%	94%
Graduation rate (2017)	91%	90%	78%
Poverty rate (2017)	10%	12%	19%
Special education population	15%	13%	12%
Students per teacher	20.7	18.5	18.4
Average teacher salary	\$41,933	\$47,265	\$48,951
Amount from Prop 301	\$6,914	\$6,556	\$6,411
Average years of teacher experience	8.5	11.5	11.4
Percentage of teachers in first 3 years	35%	19%	19%

### Per pupil revenues

Revenues by source	District		Peer average 2018	State average 2018
	2017	2018		
Federal	\$ 778	\$ 773	\$ 730	\$ 1,317
State	4,527	4,811	3,583	4,011
Local	2,135	2,646	5,234	4,592
<b>Total per pupil revenues</b>	<b>\$ 7,440</b>	<b>\$ 8,230</b>	<b>\$ 9,547</b>	<b>\$ 9,920</b>

### Select revenues from common sources

Source	District	Peer average	State average
Equalization formula funding	\$ 5,505	\$ 5,652	\$ 5,507
Grants	804	870	864
Donations and tax credits	118	141	184

### Select revenues from less common sources

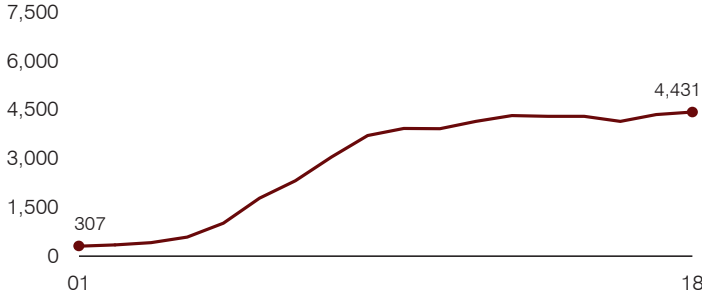
Source	District	Peer average	Number of peers receiving
Desegregation	\$ 0	\$ 0	1 of 15
Small school adjustment	0	0	0 of 15
Federal impact aid	0	0	3 of 15
Voter-approved levy increases	304	576	15 of 15

**Instructional spending percentage**

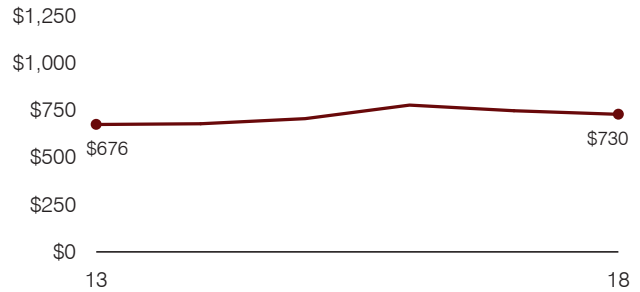
Year: 2001 2002 2003 2004 2005 2006 2007 2008 2009 2010 2011 2012 2013 2014 2015 2016 2017 2018  
 Percentage: 50.5 50.4 51.6 52.3 56.2 59.8 59.1 53.1 55.3 50.7 51.2 50.9 53.2 53.3 50.5 50.8 49.2 50.4

**TRENDS AND FINANCIAL STRESS ASSESSMENT**  
 Fiscal years as indicated

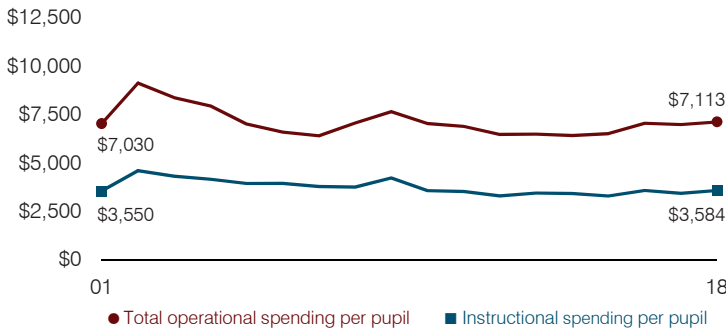
**Students attending**



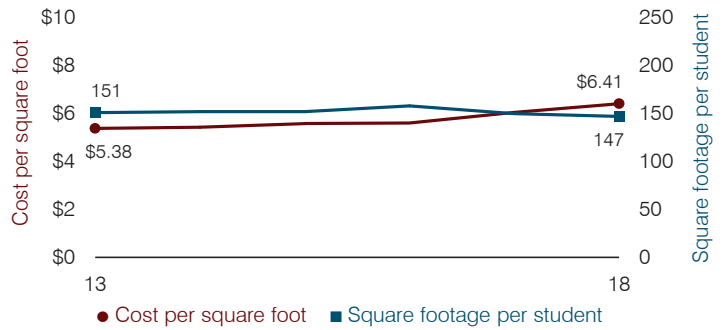
**Administrative cost per pupil**



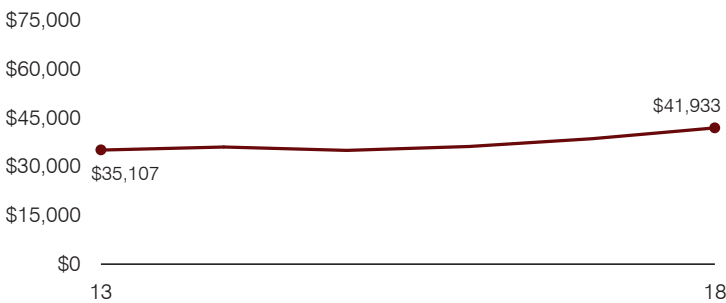
**Total operational and instructional spending per pupil (inflation adjusted to 2018 dollars)**



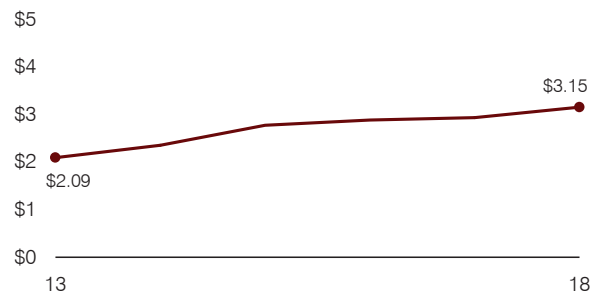
**Plant cost per square foot and square footage per student**



**Average teacher salary**



**Food service cost per meal**



**Financial stress assessment**

Overall financial stress level: **Low**

Measure: 2016 through 2018	Assessment
Change in number of district students	Increase
Spending exceeded operating/capital budgets	No overspending
Spending increase election results	Voter-approved
Operating reserve percentage, Trend	5.3%, Decreasing
Years of capital reserve held	More than 3 years
Current financial and internal control status	Compliant

**Low**      **Moderate**      **High**

**Transportation costs per mile and per rider**

