

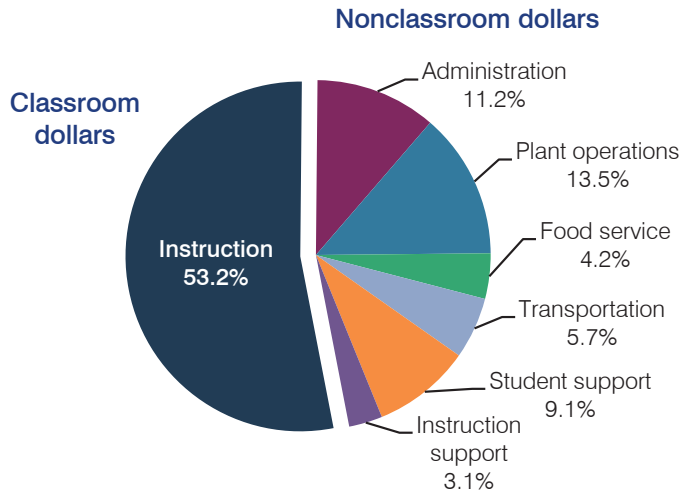
J.O. Combs Unified School District

Pinal County
 Efficiency peer groups 4 and T-7, Achievement peer group 4
 Legislative district(s): 8 and 16

District size, location: Medium-Large, Rural
 Students attending: 4,321
 Number of schools: 7

OPERATIONAL EFFICIENCY

Spending by operational area



5-year spending trend

Total spending per pupil returned to 2008 levels. Spending in the classroom was very inconsistent year to year, ranging from a high of 55.3 percent to a low of 50.7 percent. Overall, spending on student support increased substantially and spending on administration decreased substantially. Spending on other nonclassroom areas varied year to year.

Cost measures relative to peer averages

Operational area	Measure	District	Peer average	State average
Administration	Cost per pupil	\$676	\$764	\$746
	Students per administrator	89	67	67
Plant operations	Cost per square foot	\$5.38	\$5.34	\$6.03
	Square footage per student	151	176	153
Food service	Cost per meal equivalent	\$2.09	\$2.67	\$2.58
Transportation	Cost per mile	\$2.99	\$3.06	\$3.55
	Cost per rider	\$801	\$677	\$1,015

Very low Low Comparable High Very high

Per pupil spending by operational area

	District		Peer average	State average	National average
	2012	2013	2013	2013	2011
Total	\$5,938	\$6,041	\$7,187	\$7,496	\$10,658
Classroom dollars	3,022	3,216	3,779	4,031	6,520
Nonclassroom dollars:	2,916	2,825	3,408	3,465	4,138
Administration	753	676	764	746	1,138
Plant operations	890	813	921	924	1,015
Food service	255	256	364	396	412
Transportation	356	344	394	369	452
Student support	563	550	561	582	593
Instruction support	99	186	404	448	528

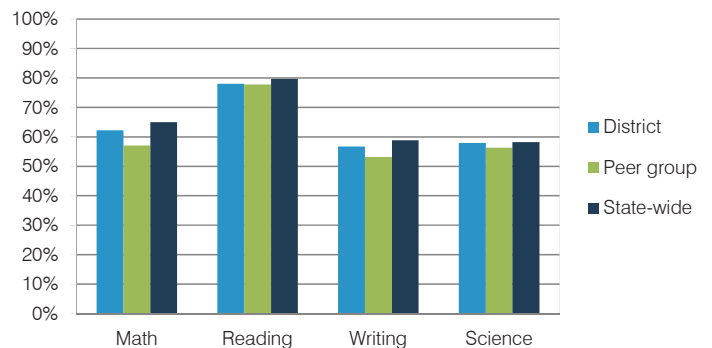
STUDENT ACHIEVEMENT, TEACHER MEASURES, AND FINANCIAL ASSESSMENT

ADE-reported district and school letter grades

District grade: **B**

Grade	Number of schools	Percentage of schools
A	1	14%
B	5	72%
C	1	14%
D	0	0%
F	0	0%
Not rated	0	0%

Students who met state standards (AIMS)



Student and teacher measures

Measure	District	Peer average	State average
Attendance rate	94%	94%	94%
Graduation rate (2012)	71%	82%	77%
Poverty rate (2012)	14%	15%	25%
Students per teacher	20.1	16.5	18.3
Average teacher salary	\$35,107	\$40,197	\$45,264
Amount from Proposition 301	\$3,471	\$4,027	\$3,784
Average years of teacher experience	8.2	11.1	10.9
Percentage of teachers in first 3 years	23%	15%	19%

Financial stress assessment

Overall financial stress level: **Low**

Measure: 2011 through 2013

Measure	Assessment
Number of students attending district	Increase
Spending exceeded operating/capital budgets	No overspending
Spending increase election results	Voter-rejected
Operating reserve percentage (max. 4%), trend	4.0%, Steady
Years of capital reserve held	1 to 3 years
Current financial and internal control status	Compliant

Stress level

